

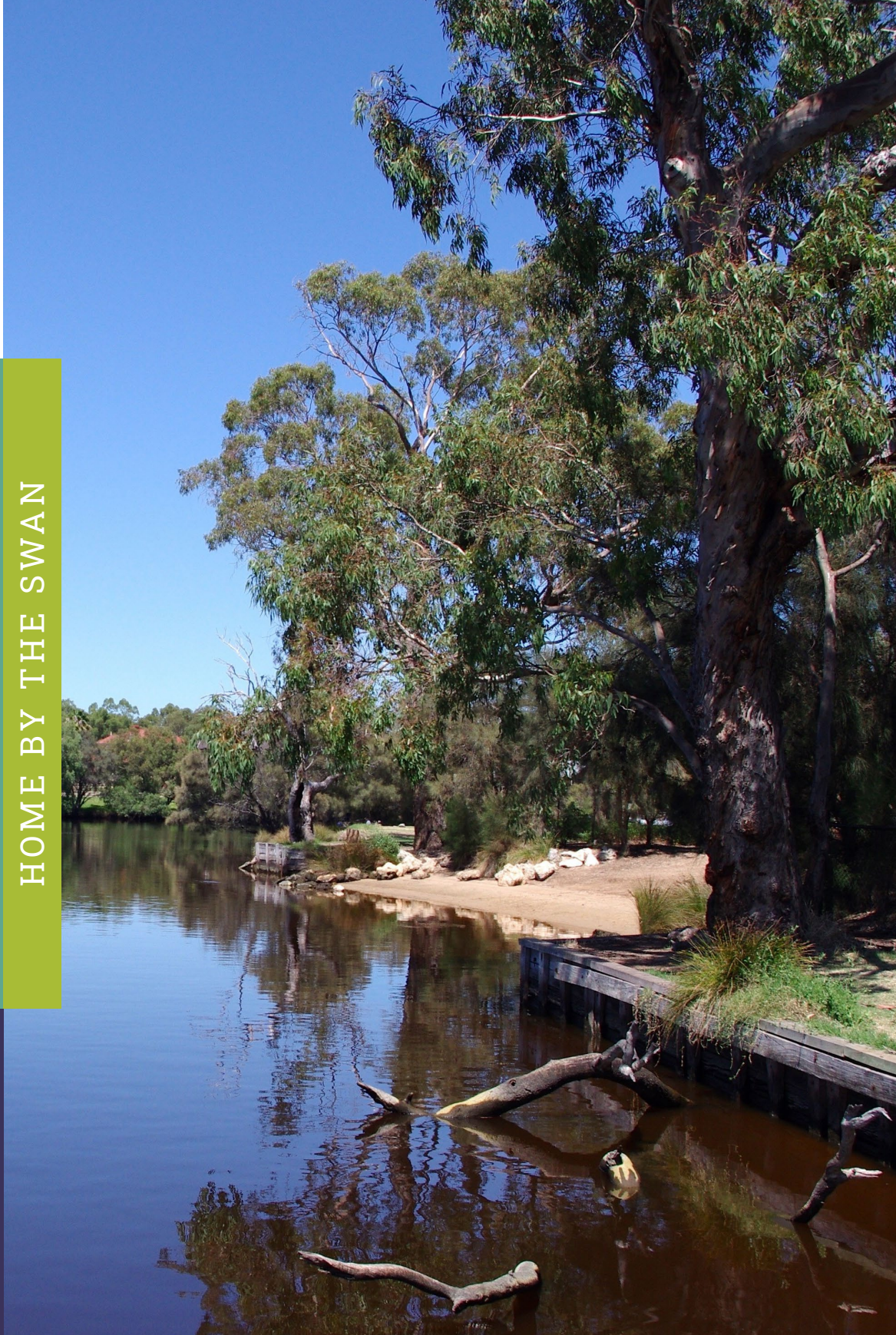


ANNUAL
REPORT

2018
2019

HOME BY THE SWAN

Town of
Bassendean



Ngalak kaadtitj nidja boodja Baal Whadjuk Noongar boodja Ngalak nyininy

We-together know this land. It Whadjuk Noongar land. We together sitting.

In the language of the first people of this land we say that we know that we are gathered together here on the land of the Whadjuk Noongar people. Always was, always will be.

Photo contributed by Friends of Bindaring Wetland, a community group who help rehabilitate and improve the amenity, habitat values and ecosystem of the creeks, wetlands and parkland near the Swan River in Bassendean. Find out more on Facebook.



Our Vision

“A connected community developing a vibrant and sustainable future, built upon the foundations of our past.”

About Bassendean



15,739 Population



997 Children under 5

10

10km from Perth



3 train stations



7km River frontage

11 km²

Geographic area

Background

Annual Report 2018-19

The WA Local Government Act 1995 requires every local government to produce an Annual Report by 31 December each year which:

- Informs the community and key stakeholders about achievements, challenges and future plans
- Promotes greater community awareness of the Town's programs and services which contribute to a high quality of life for residents, visitors and stakeholders
- Demonstrates the Town's performance against the long-term vision of the Strategic Community Plan and related projects and priorities
- Provides information about the Town's organisational performance
- Illustrates the Town's commitment to accountable and transparent government.

Alternative Formats

The annual report and financial statements are available in hardcopy from our Customer Service Centre and on the Town's website at www.bassendean.wa.gov.au

Feedback or Questions

We welcome your feedback or questions by:

Email: yoursay@bassendean.wa.gov.au
Mail: Town of Bassendean,
PO Box 87 Bassendean WA 6934
Phone: 9377 8000



Our Councillors: Cr Sarah Quinton, Deputy Mayor Cr Bob Brown, Cr Kath Hamilton, Mayor Renee McLennan, Cr John Gangell, Cr Melissa Mykytiuk, Cr Jai Wilson

Welcome to Bassendean, our home by the Swan

With seven kilometres of Swan River frontage, it's no wonder local residents love living in Bassendean, Ashfield and Eden Hill.

A tight knit community with a village feel, giving a high priority to trees, the environment, history and the arts, we're building on the community spirit to plan for vibrancy and community connection.

For local businesses, it's the location that's important – close to the airport, major highways and a customer base.

One of the first settlements in Western Australia, we have a rich Aboriginal and pioneering history.

Our future is assured. All the ingredients are there. We have land next to three train stations providing ideal locations for future transit-oriented development. We're only 10 minutes by train to the Perth CBD and close to the Metronet rail connections. See you at the local café for a cuppa (in a plastic free cup, of course).



From the Mayor

Community Connection

“People love the sense of community that exists here and many say Bassendean feels like a village or a country town.”

Bassendean is a great place - it has a wonderful community spirit, beautiful natural surroundings, a rich history and an ideal location. Five generations of my family have now lived here and I am grateful to be raising my own children in Bassendean. I love our Town but like all of us I can see potential for it to be even better in the future.

This year, we created opportunities to hear from everyone in our community through the “BassenDream Our Future” project. We have had a lengthy dialogue with the people who live here, to discuss the future of our suburbs and to learn what people love most about our Town. After connecting with more than 3,000 residents, we now have a greater understanding of our community’s vision and priorities for the future.

It became clear that, as a community, we have many shared values which unite us. We consistently heard that local people love their Town and community. We value the river and the natural environment and appreciate the proximity to Perth and good public transport. It was reinforced that our local residents are very committed to the environment, greening Bassendean, celebrating the arts and to fostering the sense of connection. People love the sense of community that exists here and many say Bassendean feels like a village or a country town.

People told us that they want to see growing vibrancy and a town centre filled with activity; that they want diversity of housing options so that it’s possible to stay living in our community through each of life’s stages. There is a strong desire to preserve the open green spaces and historic charm that our community loves, while encouraging more people to live and work in our Town Centre and near our train stations. This aligns to the State Government’s plan to encourage greater density around transport hubs, providing a boost for local businesses and better use of public transport.

One of our most important initiatives in 2018-2019 was the adoption of the principles of “One Planet Living” to guide our decisions and ensure high standards in sustainability. We are strongly committed to showing leadership in sustainability including reducing single use plastics, recycling and to working with our neighbouring councils through the East Metropolitan Regional Council to minimise resources going to landfill.

Looking ahead, we want to better manage our waste by changing the way we sort, collect, reuse and recycle our. By mid-2020, we will introduce FOGO (Food Organics, Garden Organics) for the collection of food scraps as well as natural material from the garden to create compost. This will also have an economic benefit to the Town by reducing our landfill charges.

Ultimately, our goal is to reflect the values and priorities that have been identified in our planning. We want to create an inclusive community with a vibrant, sustainable future while honouring the foundations of our past in partnership with the people of Bassendean.

Cr Renée McLennan
Mayor

From the Chief Executive Officer

A Year of Change

A year of significant changes at the Town of Bassendean has laid the foundations for a new era of growth and vibrancy in our community.

We're strengthening what's best about our town and neighbourhoods and taking advantage of some of the great opportunities for advancement.

Most importantly, the community has played a major role in guiding the discussions about Bassendean's future. After six months of engagement, our community have expressed their aspirations through Bassendream Our Future. We are now committed to continuing to work alongside our community and our strategic partners to help translate these ideas into reality.

The 2018/2019 year encompassed a review and reorganisation for the Administration in order to better align our strategy, leadership, culture, structure and operating capabilities.

We have started with the recruitment of a changed leadership team and as the new CEO, I am delighted to have returned to the town where I grew up and attended school.

Having spent most of my working life in State Government as a senior executive, I've had the opportunity to drive and shape policies, strategies and projects with links to the community. These experiences have provided a strong foundation for the challenges of a new opportunity in local government.

I am delighted to have the support of a dynamic and extremely well-credentialed Mayor in Renée McLennan who has a passion for the community and is an inspiration to work alongside. The partnership approach between the Mayor and CEO cannot be underestimated in ensuring community outcomes are optimised.

I am really pleased to have established a new executive team for 2019-2020. The team is ideally placed to lead the organisation, reflective of Council's priorities:

- Director of Community Planning Luke Gibson will facilitate many of the initiatives which form the basis of Bassendream Our Future. He will be responsible for planning and delivering the amenity to achieve a vibrant, healthy and connected community.
- Director of Corporate Services Paul White will play a key role in the Town's finances and procurement, the digitalisation reforms to improve efficiencies, customer services and other important governance-related functions.
- Executive Manager of Infrastructure Phillip Adams will be responsible for the management of our assets, parks, gardens and bushland and for new infrastructure projects including the Men's shed, bike paths and Infant Health Clinic.

I am delighted to have a highly skilled and dynamic team which I am confident will deliver on some very challenging objectives and community expectations.

One of the biggest tasks will be the planning and development by 2050 to meet the State Government's target of accommodating 4,150 additional homes.

In this context, we're very fortunate. We have three suburban rail stations at Ashfield, Bassendean and Success Hill which are the envy of other councils. With the State Government's focus on providing extra housing near train stations, we are positioned well to build on our existing 7,000 homes.

We have made a commitment to improve our information sharing with the community and to involve the community more in our business. We look forward to taking our Council briefing sessions to the community in 2019-20. It's about getting the councillors and executives out of the chamber and into the community, changing the dynamics of the way we work and being more open and accessible to the community we care for.

We have much to achieve in 2020. We will be developing a new Strategic Community Plan reflective of the community's aspirations and building from the very important community feedback received through Bassendream Our Future.

Working alongside a passionate team of staff and councillors, we are all committed to leaving a positive legacy for future generations.

This is more than just a job for me. It's about delivering for the Town where I grew up and for the people who live here now and in the future.

I commend this report to you.



Peta Mabbs
Chief Executive Officer



CEO Peta Mabbs appointed October 2018

New Executive Team

The Town of Bassendean enters 2020 with a new executive team.



Peta Mabbs
Chief Executive Officer

- Manage day-to-day operations of the local government
- Employment and management of staff
- Liaison with the Mayor on local government affairs and function
- Implement council decisions
- Council support
- Corporate communications and community engagement
- Human resources and organisational development
- Strategy, governance and reporting



Paul White
Director Corporate Services

- Finance, rates and procurement
- Customer service
- Library, information management and IT
- Children's and youth services
- Seniors services



Phillip Adams
Executive Manager Infrastructure

- Roads, cycling and transport
- Waste management and recycling
- Parks and gardens
- Civil construction projects
- Facilities maintenance
- Fleet



Luke Gibson
Director Community Planning

- Strategic planning
- Placemaking
- Events, arts and culture
- Rangers
- Building
- Environmental health
- Development applications
- Volunteering
- Recreation

Our Services

As a local government, the Town of Bassendean is responsible for delivering a wide range of economic, human, recreational and property services as well as developing and maintaining essential community infrastructure.

Local government has legislative responsibility to perform many mandatory functions for the local community, such as animal management, approvals for planning, building and health, and swimming pool fencing.

We also deliver discretionary services to the community, such as library, seniors, children and youth services and the provision of sporting venues and programs, which contribute to an improved quality of life for people in our community.

Community assets

Car parks and street lighting
Community buildings
Jetties
Libraries
Parks, gardens and bushland
Playgrounds
Roads, drainage and footpaths
Sport and recreation facilities
Youth centre

Responsibilities and Services

Access and inclusion
Bushfire prevention
Building, planning and health approvals
Civic ceremonies
Community development
Community health

Conservation and environmental programs
Cultural and volunteering programs
Facility hire
Food safety
Information sharing – website, Facebook, newsletters
Library programs
Graffiti removal
Festivals and events
Noise investigations
Mosquito management
Public event compliance
Parking, building and planning compliance
Reconciliation Action Plan
Rangers (includes animal management)
Recreational programs and events
Swimming pool safety
Urban planning
Waste management and recycling
Youth Services

Calendar of Community Events

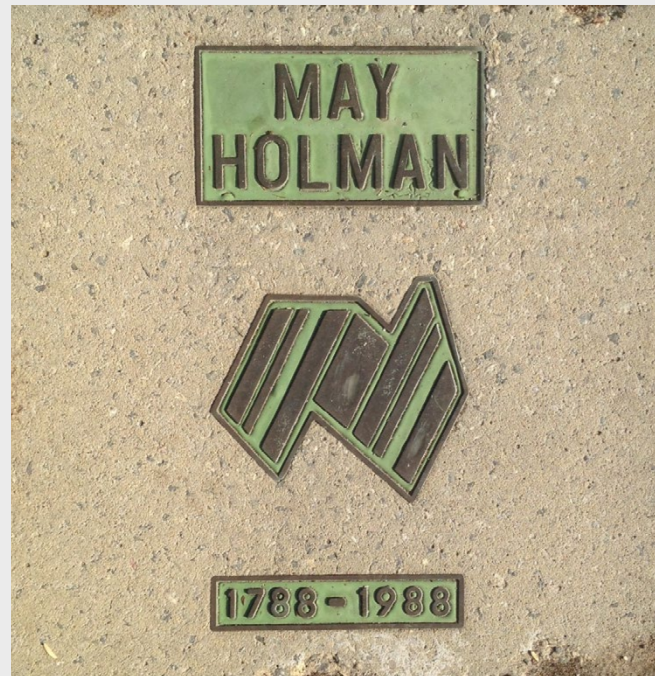
- **Old Perth Road Markets**
Monthly
- **Citizenship Ceremonies**
Four per year
- **NAIDOC Family Day**
July 2018
- **Vietnam Veterans' Day Service**
August 2018
- **Children's Week Walk**
October 2018
- **Keen on Halloween**
October 2018
- **Armistice 100th Commemoration**
November 2018
- **Seniors Week Techno Expo**
November 2018
- **WAMFest in the Park**
November 2018
- **Christmas Street Party and Carols**
December 2018
- **Citizens of the Year**
January 2019
- **Australia Day Fireworks**
January 2019
- **WonderRealm Perth Fringe Festival**
February 2019
- **50th Anniversary of Anzac Terrace Primary School**
March 2019
- **Launch Bassendream Our Future with Minister Simon McGurk**
March 2019
- **ANZAC Day Service**
April 2019
- **Bassendean's Got Talent**
April 2019
- **Pensioner Guard Cottage Heritage Festival**
April 2019
- **Dandjoo Koorliny Reconciliation Gathering**
May 2019
- **Festival of Local Business**
June 2019



Our past

Beginning as a small settlement called West Guildford in 1831, the area became a separate local authority in 1901 and was renamed Bassendean in 1922.

Archaeological evidence shows that Aboriginal people have inhabited this area for more than 45,000 years before Captain James Stirling and his exploratory expedition arrived in WA in 1827. The importance of Bassendean for Noongar hunting and gathering activities, and as a meeting place, is affirmed in many documents and personal narratives.



How Bassendean was named

By July 1831, Guildford needed to expand. Across the river and to the west was a Government Reserve. This was selected as a new town site and was named West Guildford. Peter Broun, the 1st Colonial Secretary, took occupation in 1832 of Stoke Farm. He named the dwelling Bassendean after the name of his family seat in Berwickshire.

Settlers acquired prime agricultural land along the fertile alluvial flats of the Swan River and established farms. Populated by gentleman farmers and Pensioner Guard families, the town grew rapidly during the goldrush years of the 1890's.

1900's

The establishment of industry and demand for labour at the Midland Railway Workshops gave the suburb its distinct working class character. Residents participated in both wars. Post-World War II emigration saw an influx of different nationalities. Through it all, Bassendean has retained its strong sense of identity and community.



Heritage

The Town has a register of significant trees and the following historical buildings are on the State Register of Heritage Places:

- Bassendean Oval Entrance Gate
- Daylesford
- Earlsferry
- Guildford Road Bridge
- Bassendean Oval
- Bassendean Oval Grandstand
- MacDonald Grandstand
- Bassendean Fire Station (former)
- Success Hill Lodge
- Pensioner Guard Cottage
- Bassendean Masonic Lodge (former)

Today

The Town now has a mix of housing, parks and recreational areas, as well as light industry and commercial areas. It has riverside public open space, including land used by Aboriginal people for thousands of years as ceremonial places.



BASSEN Dream OUR Future

A vision for Ashfield, Bassendean & Eden Hill

OVERVIEW OF FEEDBACK

THE TOWN OF BASSENDEAN Past and Present

TOP 5 GREAT THINGS ABOUT THE TOWN

1. Proximity to the river
2. Proximity to Perth city
3. Access to public transport
4. Natural environment
5. Location (general)

“The remaining natural green spaces and the river environment attracted me. I'm sure it is these things that create a greater sense of community here than what you find elsewhere”

TOP 10 WORDS TO DESCRIBE THE TOWN NOW

1. Sense of community
2. Green and natural
3. Relaxed/quiet
4. Feels like a village/country town
5. Connection to history and heritage
6. Connected/accessible
7. Future potential
8. Proximity to the river
9. Progressive
10. Too quiet/uneventful

THE TOWN OF BASSENDEAN In the Future

TOP 5 THEMES TO MAKE LIVING IN THE TOWN EVEN BETTER

1. Environmental management
2. Preserve/enhance open space
3. Events/arts/cultural initiatives
4. Improved connection/accessibility
5. Old Perth Road activation/revitalisation

“Respect for our Town's green spaces, mature trees, natural habitats, wetlands and the river. These are taken for granted and not looked after. Any town can have more shops – our natural heritage is what makes Bassendean special and pleasant to live in”

TOP 10 WORDS TO DESCRIBE THE TOWN IN THE FUTURE

1. Vibrant/active
2. Green and natural
3. Sense of community
4. Modern/progressive
5. Sustainable
6. Place of interest
7. Inclusive/inviting
8. Connected/accessible
9. Safe
10. Relaxed/quiet

Bassendream Our Future

To meet the State Government's requirement to increase housing density, the Town committed to engage the community through a project named Bassendream Our Future.

Working with consultants Creating Communities, the Town hosted a series of workshops, mailouts, online engagements and opened the former post office in Old Perth Road as an Ideas Hub for six months. More than 3,000 pieces of feedback were received.

In recent years, the traditional homes and the beautiful riverside environment have attracted a new generation of people to the area. The local population comprises a mix of young families (about 1,000 of the 15,000 residents are under five), artists, musicians, business operators and commuters. Many of today's residents value the community lifestyle less than 16 minutes from Perth city by rail.

The future

Many of the town's existing residents want to preserve the conservation areas and open spaces, particularly links to the river. They want more vibrancy and business activity in the town centre. Logically, they want proposed new apartments and mixed use developments to be built near the railway stations.

Council is already planning for the next steps, knowing that, whatever the future holds, local residents will want a say in the way their community develops.

Community feedback via Bassendream Our Future

Community feedback via Bassendream Our Future shapes and informs

Strategic Community Plan
(vision and community outcomes)

Local Planning Strategy
(future land planning and development)

Creating the community we seek for the future

VALUES

Survey participants were asked to indicate their level of agreement with each of the below values. These values were informed by earlier engagement.

Bassendean, Ashfield and Eden Hill are welcoming communities where people know each other and have a “country town” feel



“I love the old houses and established gardens, which give a sense of being in a country town, all while being close to the city”

The local area has a rich history that is reflected in the community, the environment and the built form



“Heritage should also include Aboriginal heritage”

A beautiful natural environment with an abundance of vegetation, trees, green open space and connection to the Swan River are important elements of the Town of Bassendean



“The biggest volunteer group in Bassendean is the group interested in the natural environment”

KEY



An accessible town centre in Bassendean (Old Perth Road) and easy access to the Perth CBD make Bassendean, Ashfield and Eden Hill attractive and convenient places to live



“Better emphasis on integrating Ashfield and Eden Hill (is needed)”

One Planet Living

Local residents are passionate about their natural environment and in 2020 they have the chance to become some of Western Australia's leaders in sustainability. Our community listed environmental management as a top priority for the Town in Bassendream Our Future.

The results coincided with a Council decision to become pacesetters in the One Planet Living Sustainability frameworks, the second local authority in WA to take on the challenge after the City of Fremantle.

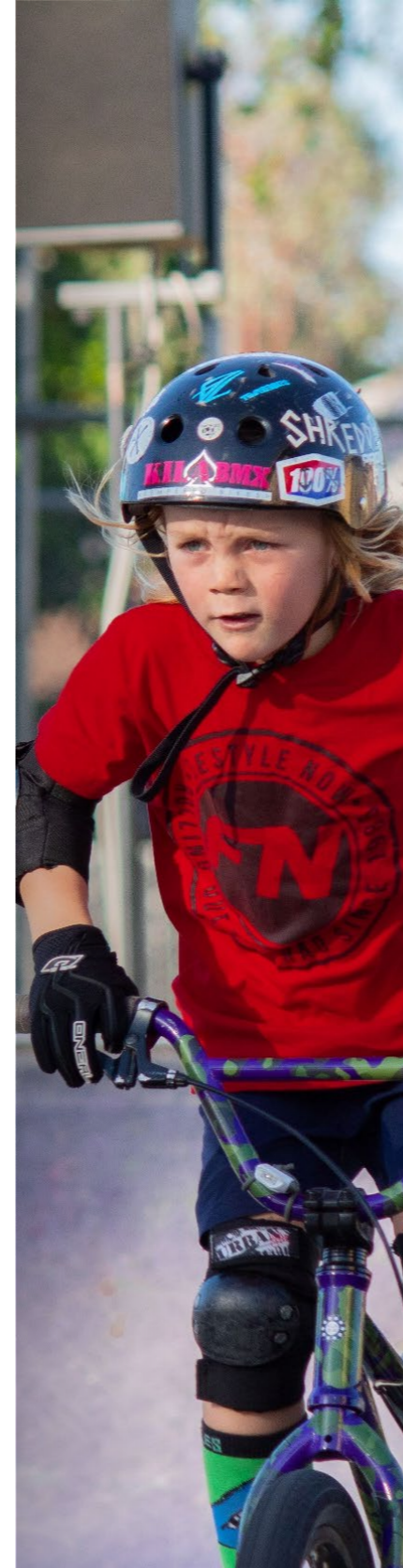
The Town adopted the One Planet Living approach, based on 10 principles that cover all aspects of social, environment and economic sustainability.

Importantly it puts people first – grounded in the reality of how people live their lives rather than box ticking for compliance purposes. And it provides an authentic approach to achieving sustainability. It reaches hearts as well as minds – the framework is globally recognised and is used to raise the level of consciousness and inspire people across communities to get involved in sustainable change.

In 2020, Council will develop a new Strategic Community Plan which will incorporate and embed the One Planet Living principles.



Street trees are being planted on verges



Achievements for 2018/2019

Social

Strategic Community Plan priorities

- Build a sense of place and belonging
- Ensure all community members have the opportunity to be active, socialise and connected
- Plan for a healthy and safe community
- Improve lifestyle choices for the Aged, Family and Youth

One Planet Living Principles

- Health and happiness
- Cultural and community

Actions

- Reconciliation Action Plan adopted by Council
- Award-winning Mary Crescent Reserve Nature Playground opened
- Arts and Culture Plan adopted by Council
- WonderRealm Bassendean, sponsored by Council, held as part of Perth Fringe World wins Best Free Community Event Award
- Security cameras and lighting installed in Jubilee Reserve and Mary Crescent Reserve. Mobile cameras deployed
- Consultation on heritage restoration for Pensioner Guard Cottage
- Awards for RYDE driver education program

Youth Service turns 30

The Town of Bassendean has been a strong supporter of disadvantaged young people since establishing its own Youth Service in September 1989. The Centre on the corner of West Road and Guildford Road is co-located with the Town's skate park built in 2008.

Throughout the years, Bassendean Youth Services (BYS) has provided support for generations of young people aged 12 to 25 through recreation, advocacy, housing, individual case management, job preparation and individual case work. More recently, BYS has offered local young people a high school equivalency program for those disengaged from mainstream education, a transitional accommodation program, and the award winning 'RYDE' driver education project which has been successfully expanded to other local government areas.



In 2019, Swan Districts entered teams in the WA Football League Women League, Reserves and Rogers Cup (15-17 years)

Social inclusion

- Engaged the community on the need to address isolation, connectedness and community-driven initiatives, through forums hosted by Peter Kenyon from Bank of Ideas and Inclusion Solutions (better connected clubs, community groups and inclusive events)
- ReLAX program with ukulele playing, Aboriginal language, stand up paddle boarding, cookie decorating and other courses to encourage recreation, learning new hobbies and interaction with others in the community
- Hosted events to recognise NAIDOC Week, ANZAC Day, Australia Day and provided sponsorship for community-funded events
- Live streaming of Council meetings, hardcopy newsletter, newspaper advertising and Facebook posts to reach different audiences

Childcare for 200 families

At no cost to the ratepayer, Wind in the Willows Bassendean and Ashfield operate at full capacity for most of the year and helped more than 200 families with education and care for children in 2018/19. Both services are rated as 'exceeding' the National quality standard. The 39 educators with varying tertiary qualifications provide high quality education and care. We also host intergenerational days where smiles and stories are shared between older residents and our youngsters.

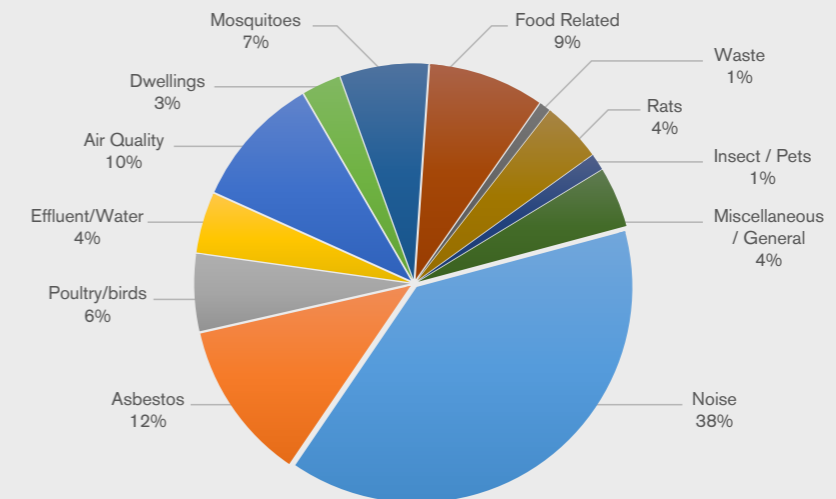
A relationship with the Midvale Hub Parenting Service allows us to co-fund a position for a Parenting Champion to run six-week programs for parents on topics including emotion coaching, protective behaviours, tuning into teens and tuning into children.

Healthy community

- About 160 risk assessments are made each year to check food hygiene in our local eateries, with 9 improvement notices and 1 infringement notice issued in 2018/19 to clean, repair or replace items
- A further 31 tests on ready-to-eat foods such as sandwiches and salads and swabbing of 16 pieces of equipment returned satisfactory results
- A total of 87 temporary food business permits were issued, mainly related to Old Perth Road markets and vendors at Australia Day and WonderRealm
- Inspections of 48 light industrial businesses about waste disposal

- Weekly river sampling between November and March involved 90 samples at Success Hill, Point Reserve and Sandy Beach, with testing at PathWest Laboratory Medicine WA
- Mosquito monitoring included larval sampling and treatment of wetlands and stormwater drains, with 3,435 adults captured to identify the species
- About 4,690 pouches of rodent bait were issued to residents, an 8% decrease on the previous year.
- Of 243 complaints investigated, 149 were health related matters about air quality, odour and asbestos, with 94 noise complaints about loud music and parties

Complaints investigated



Access

In line with the Town's Access and Inclusion Plan:

- Our Library has adjustable tables, illuminated magnifying glasses, large print books, audiocassettes, large print screens, e-books and housebound services
- Volunteer Services offers transport to activities, outings and medical appointments
- Provide support for people who need assistance with waste collection and recycling bins
- Hyde Retirement Village is maintained accessible
- Significant public events and activities of the Town are conducted in venues that are accessible to people with disabilities
- Information made available in accessible format

Library

- Open 53 hours per week, over six days
- Total visitors for the year: 114,449 (average 2,200 per week or 366 per day)
- Memberships: 6,658 active members (43% population), including 724 new members in 2018/19
- Reference Inquiries 21,245 questions (average 68 per day); includes 9,836 requests for help with computers and photocopying, 479 inquiries about community information and government services enquiries, and 792 enquiries about eResources
- Library books, DVDs, audio books etc, 44,475 items (2.87 per capita)
- Total loans: 15,6848 (10.1 per capita) or 23.5 per library member
- Interlibrary Loans: Supplied 1,135 items to other libraries and sought 646 items from other libraries for our patrons
- New items: 2,259 items added (books, DVDs, audio, board games, jigsaws)
- Volunteers: 23 volunteers contributed 1,590 hours (30hrs per week on average)
- Events and Programs: 161 adult sessions (1,445 participants) and 145 children's sessions (2,112 participants)
- For Kids: Story Time, Rhyme Time, Lego League, School holiday activities, Children's Book Week, Better Beginnings Program
- For Adults: Literary Salon, Library Lunchtime Interludes, weekly Craft Group, English as Second Language (weekly), Cyber Citizen one-on-one, housebound delivery, monthly History Walks and annual history lecture

Library Highlights:

- Guest authors Amanda Curtin; Dave Warner and his band on his 'Life of Crime' book; Kylee Matson on 'Meet Repeat Pete: a pirate with repetitive behaviour'
- Introduction of historic homes guided walks
- ABC Radio promotion of historic postal box
- Historical displays with community groups in Ashfield and Eden Hill
- Printed version of origins of street names brochure
- Oral history interviews recorded, transcribed and added to the collection

Seniors Services

In line with the Town's commitment to help seniors live independently in their own homes, we provided 27,630 hours of support to 40 clients requiring a higher level of care, ranging from personal care, domestic tasks, carer respite, medication support, transport, meals, and social support, to gardening, repairs, outings and support with shopping.

The Town completed the Federal Government's latest three reform requirements to a high standard, including:

- The transition from the Home and Community Care (HACC) program to the Commonwealth Home Support Program (CHSP);
- The implementation of the Aged Care Quality Standards; and
- The mandatory publication of Home Care Packages Fees on My Aged Care to provide improved transparency

The Commonwealth Home Support Program, now in its second year, provides people with basic care to maintain independence in the community. Below is a snapshot for 2018-2019.

Client profile	
Number of clients provided with services	523
Female	67.5%
Male	32.5%
Number of hours of service delivered	23,448
Other outputs delivered (meals/transport trips)	5295



Photo: David Baylis - Community News

Achievements for 2018/2019

Natural Environment

Strategic Community Plan priorities

- Display leadership in environmental sustainability
- Protect our river, bushland reserves and biodiversity
- Ensure the town's open space is attractive and inviting

One Planet Living Principles

- Land and nature
- Sustainable water
- Materials & products
- Zero waste
- Zero carbon energy

Actions

- One Planet Living sustainability framework adopted, underpinning future strategic planning
- Planning for FOGO (3 bin system) waste management
- Town of Bassendean Waste Local Law 2019 completed
- Local Planning Policy No. 2 adopted (energy efficient design offers green star ratings, rainwater tanks and PVC panels as an alternative to solar passive design)

Number	Planting location
1,000 seedlings	Point Reserve, Railway Parade and Success Hill Reserve
120 verge trees	Town parks and reserves
140 verge trees	Verges outside residences
3,726 plants	Bushland reserves
1,830 plants	Grown and planted by Bassendean Preservation Group
150 plants	Planted by Friends of Success Hill Reserve
4,000 plants	Provided to residents at low cost as part of the Plants to Residents program
Total	10,966 trees and plants

Achievements for 2018/2019 | Natural Environment

Meet Steven Morrissey, our Parks and Gardens Supervisor, whose team has been planting hundreds of grevillea, Kangaroo Paw, myrtles and other native plants.

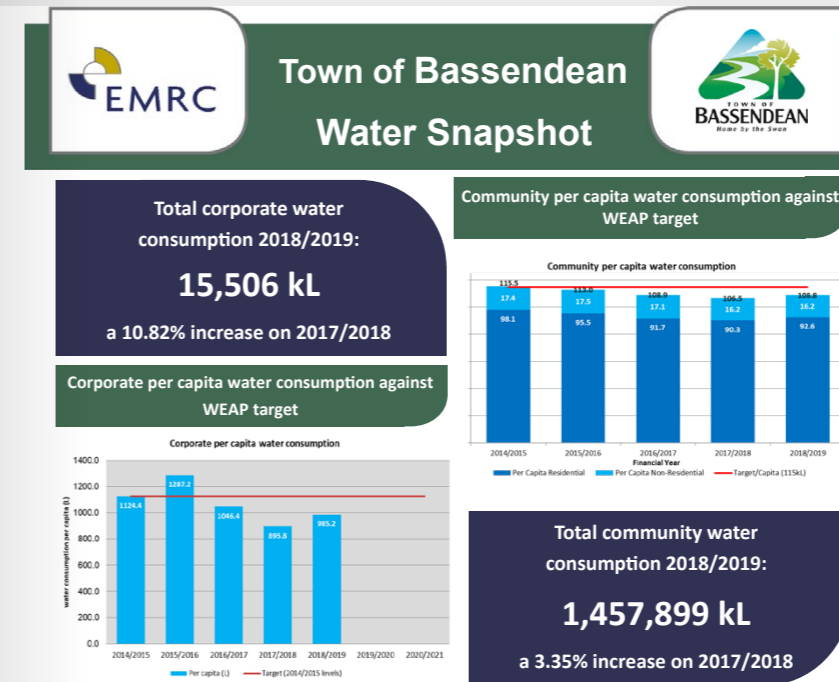
Community members engaged through Bassendream Our Future have indicated that enhancing open spaces is their number one priority.

At Point Reserve, we are creating a bird-friendly garden, with 200 seedlings planted. About 600 seedlings have been planted along the cycle path on Railway Parade and another 200 at Success Hill Reserve.

The Town is working with residents to establish more street trees on verges, and encouraging the planting of verges.

Water use

We're working with our venue users to reduce water use in the coming year.



Waste management

The Town is leading the way in waste management, with the anticipated roll-out of a three bin system in July 2020. The new system aims to reduce our impact on the environment by changing the way we sort, collect, reuse and recycle our waste.

Householders will be offered:

- A Red lid bin: General household waste that goes to landfill
- A Yellow lid bin: Recyclable waste such as glass, paper and recyclable plastics
- A Lime green lid bin: Food organics and garden organics (FOGO) which becomes compost

All local authorities in Perth will be transitioning to the new FOGO three bin system by 2025 and the Town of Bassendean will be one of the early adopters.

We're proud to be leading the way by recycling and reusing our organic waste, rather than tipping it into landfill. We want to preserve our natural environment and cut our landfill costs – freeing up money for essential services in the community.

Key activities for 2018/19:

- Number of recycle bins emptied 148,345
- Number of waste bins emptied 338,631
- Tonnes of household recycling diverted from landfill 1,272.77
- Tonnes of rubbish sent to landfill 6,977.87
- Introduced twice yearly drop-off days for recyclable goods, including aerosols and styrofoam
- Two organics bins purchased for events to recycle organic material
- Declared Town events to be plastic-free, with policy implemented first with market stallholders
- Recycling of coffee pods at the Library
- Staff initiatives to recycle waste and separate organics
- Cooperation with neighbouring local governments through Eastern Metropolitan Region of Councils (EMRC)



A Waste Authority Program

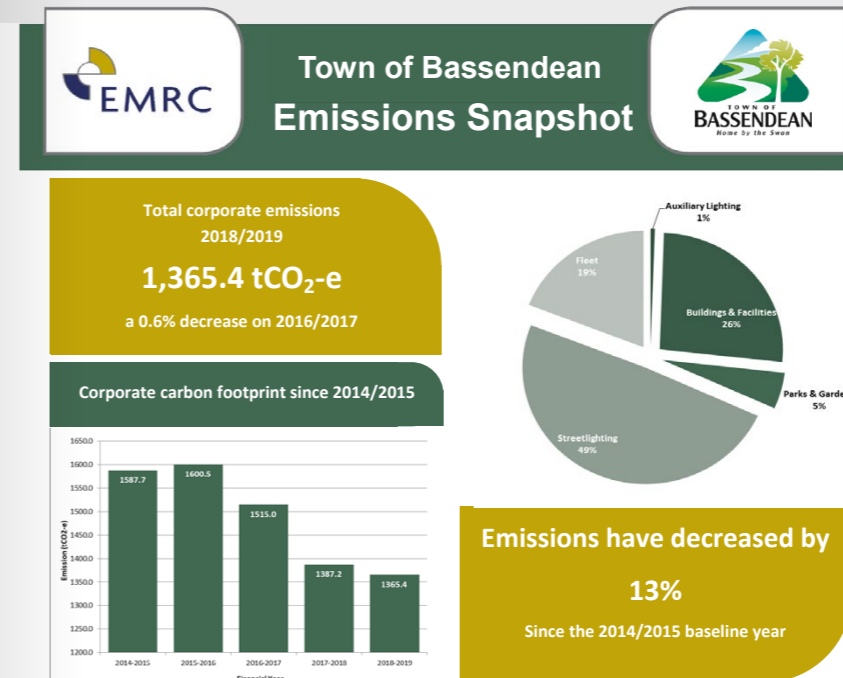


Sustainability

We are committed to reducing our emissions and electricity use. Our actions in 2018/19 included:

- Purchased an electric vehicle for tree watering
- Installed rooftop solar power system on the Town's Library, Administration building, Depot, Customer Service Building, Wind in the Willows childcare, Ashfield Seniors & Disability Services Building and Alf Faulkner hall
- Fitted energy saving LED lighting and airconditioning at various locations

- Stringent monitoring of emissions and electricity through EMRC
- Ceased provision of vehicles for Town of Bassendean new management appointments from 2018/2019 onwards
- Installed two recharging stations for electric cars
- Purchased electric bikes
- Encouraged cycling and walking including Your Move Bassendean program, bike repair stations and bike signage on footpaths



Achievements for 2018/2019

Built Environment

Strategic Community Plan priorities	<p>Plan for an increased population and changing demographics</p> <p>Enhance connectivity between places and people</p> <p>Enhance the town's appearance</p>
One Planet Living Principles	<p>Travel and transport</p> <p>Cultural and community</p>
Actions	<p>Bassendream Our Future consultation to provide input into planning documents.</p> <p>Work starts on draft Local Integrated Transport Plan.</p> <p>Vibrancy Project (murals, planter boxes and festoon lighting).</p>

With the appointment of a new Director Community Planning, the Town will build on its engagement through Bassendean Our Future to reshape its approach to planning and placemaking in 2019/2020.



Activities for 2018/2019 focussed on:

- Drafting a Local Integrated Transport Plan to consider access to land and future development, especially around the Ashfield, Bassendean and Success Hill train stations. The plan provides a broad framework and recommended strategies about how the Town's movement network could evolve over time. It is integral to informing the development of the new Local Planning Strategy, particularly given the important connection between land use and transportation
- Planning and design of Surrey Street infant health clinic and heritage upgrade
- Planning and design of Sandy Beach playground, Men's Shed, Principal Shared Path, Broadway bike path, Whitfield Safe Active Street and other key projects
- Adding murals, planter boxes and festoon lighting to Old Perth Road as part of the Vibrancy Project
- Processed 199 applications, including 166 for development (planning) approval and 33 for subdivision
- Issuing 281 Building Approvals such as Building Permits, Demolition Permits, Building Approval Certificates (retrospective approval) and Fence Approvals, plus a number of strata clearances and occupancy permits

Your Move Bassendean

Residents embraced the Your Move program with more than 4,000 people participating in the behaviour change program in the first six months of 2019. The program is a free personalised active travel program that provides information, materials and support to encourage individuals, workplaces and schools to find more active ways to travel.

The Department of Transport's Your Move team worked with the Town and local residents to find ways to incorporate more walking, cycling and public transport into their lives, with:

- About 150 wayfinding signs installed in Bassendean, Eden Hill and Ashfield to highlight the walkability of the local area and point out times to local destinations. Each sign points to nearby locations of interest - a school, a park, the shops, the library, a skate park - and gives the time it should take to walk or ride to the destination
- Another 58 signs have been installed to guide cyclists and pedestrians to Bassendean train station as part of the Public Transport Authority's Connecting Stations project
- A bike repair station was installed on Old Perth Road, with a bike pump and tools allowing riders to do simple maintenance and quick repairs on any bike

Achievements for 2018/2019

Economic Development

Strategic Community Plan priorities	Build economic capacity Facilitate local business retention and growth
One Planet Living Principles	Local and sustainable food Materials and products
Actions	<p>Memorandum of Understanding with the Department of Communities (Housing) to explore future development in the Town Centre.</p> <p>Revitalise Town Centre with festoon lighting and murals, creating more opportunities for people to come together.</p> <p>Established Old Perth Road Collective as a town team to help activate main street.</p> <p>Bassendean Festival of Local Business hosted jointly by Town and business sector in May 2019.</p> <p>Retail Needs Assessment incorporated in the Local Economic Overview and Economic Development Strategy.</p> <p>Engaged with Bassendean Business Association to drive economic development.</p> <p>Hosted monthly markets and WonderRealm Fringe event to attract visitors to the area</p>

Economic development runs through everything we do in an effort to attract visitors, investment and residents to our Town.

Achievements for 2018/2019 | Economic Development

Bassendean remains at the centre of Perth's Eastern Metropolitan Region. The region has a resident population of 315,000 and provides employment for 124,500, about 17% of all employment opportunities for metropolitan Perth.

Our combination of excellent infrastructure, idyllic lifestyle location and a track record of strong return on investment means Bassendean is attractive for a range of employers.

For the Town of Bassendean, economic development is a priority area. In its Strategic Community Plan (2017- 2027), two of the core objectives are to build economic capacity and facilitate local business retention and growth.

To demonstrate our commitment to support local business, the Town proposes to sign the Small Business Friendly Local Government Charter.

This initiative is backed by the Small Business Development Corporation, a State Government agency focused on supporting small business in Western Australia.

The Town's commitment to the Charter helps us continually improve our interaction with and support for local small businesses in Bassendean, Ashfield and Eden Hill.

The Town and a committee of hardworking volunteers from businesses hosted a week-long Festival of Local Business, featuring a photograph exhibition, main street treasure hunt, video production and pitching events in June 2019.

6 days, 8 locations, 9 inspiring events.

Inspired by locals. Presented by locals. Hosted by locals.

50 YEARS OF ENGINEERING EXCELLENCE

HOFMANN ENGINEERING TOUR

THURS 13TH JUNE

HOFMANN ENGINEERING

Achievements for 2018/2019

Good Governance

Strategic Community Plan priorities	<ul style="list-style-type: none"> Enhance Organisational Accountability Proactively partner with the community and our stakeholders Strive for improvement and innovation
-------------------------------------	---

One Planet Living Principles	<ul style="list-style-type: none"> Equity and local economy Materials and products Zero waste
------------------------------	--

Actions	<ul style="list-style-type: none"> Implemented a New Way of Working to deliver greater value to the community through strategic leadership, consultation and cultural and structural changes Conducted CULTYR Employee Scorecard Survey as part of cultural change program Appointed a Corporate Communications Coordinator IAP2 community engagement training provided to Councillors and key staff to build capability Improvements to Town's website, online hub and social media presence Regulation 17 review of the appropriateness and effectiveness of internal control and compliance with legislation Organisational risk assessment undertaken Review of Seniors Services completed Improvements to project management and performance reporting
---------	--

Workforce

The Town of Bassendean has 186 staff at eight locations, including Children's Services, and Seniors Services.

Area	Fulltime	Part-time/casual	Total
Parks, engineering, environment, fleet, admin, waste	30	4	34
Community, Events, Rec-reation and Volunteering	3	3	6
Planning/Health	6	1	7
Rangers	4	2	6
Children's Services	17	23	40
Library	5	11	16
Seniors and Disabilities	6	35	41
Youth Services	2	0	2
Customer Service, Rates, IT, records, accounts, leases and contracts	10	7	17
Executive, safety, HR, communications, governance, admin	7	7	14
Total	95	93	188

As required by the Local Government Act, the Town reports that on 30 June 2019, the following number of employees earned an annual cash salary of \$100,000 or above:

Cash Salary Range	Number of Employees
\$100,000 - \$110,000	3
\$110,000 - \$120,000	2
\$130,000 - \$140,000	1
\$140,000 - \$150,000	2
\$150,000 - \$160,000	1
\$200,000 - \$210,000	1

Complaints register

Under section 5.121 of the Local Government Act, the Town is required to maintain a register of complaints which result in a finding by the Local Government Standards Panel that a minor breach by a council member has occurred. In the period ended 30 June 2019, the Town received no complaints.

Record Keeping

In accordance with the State Records Act 2000, the Town of Bassendean and all its employees are legally obliged to comply with the Town's Record Keeping Plan. The State Records Commission approved the plan (dated 1 August 2018) on 14 December 2018. The Town must review and submit a revised plan by 2 August 2023.

Animal Management

Our Rangers provide a service and statutory role in animal management, working with the Town's pet owners to encourage responsible ownership of dogs and cats. For 2018/2019, the Town registered 2,086 dogs and 766 cats.

The Rangers impounded 55 stray dogs and 75 stray cats, most of which were reclaimed or rehomed. Residents are encouraged to register their pets so that stray animals can be reunited with their owners.

Future Directions

Annual Budget

After a period of community consultation, the Town delivered the 2019/2020 Budget on 20 August 2019 with a one percent rates increase for most residents and the understanding of being financially responsible and focused on the future. The Budget:

- Creates new grants for community events
- Minimises our waste by introducing a three-bin system
- Invests in the Town's information technology to streamline its services to residents
- Recognises the Town's capacity to deliver day to day services, new projects and activities
- Evolves the Town's traditional delivery model and leadership.

Council elections

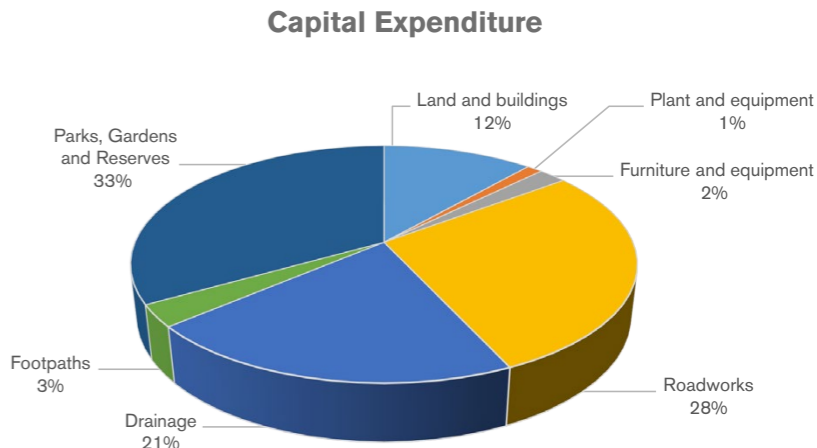
Local government elections in October 2019 saw the Mayor Cr Renee McLennan and Cr John Gangell re-elected, and the retirement of Deputy Mayor Cr Bob Brown and Cr Melissa Mykytiuk. The Council welcomed Cr Chris Barty and Cr Hilary MacWilliam.

Snapshot of Financial Performance

The following provides a snapshot of the Town's Operating Income and Expenditure for 2018/19. More detailed information can be found in the Financial Statements at the end of this Annual Report.

Total Operating Income	\$25,248,986
Total Operating Expenses	\$25,745,655

Revenue:	
Total Operating Income	\$25,248,986
General Rates	\$13,125,890
Fees and Charges	\$6,220,530
Grants and Subsidies and Contributions	\$4,412,411
Interest Earnings	\$519,008
Other Revenue	\$971,147



Our Locations

Customer Service Centre

35 Old Perth Road
mail@bassendean.wa.gov.au

Administration and Council Chambers

48 Old Perth Road
mail@bassendean.wa.gov.au

Bassendean Memorial Library

46 Old Perth Road
baslib@bassendean.wa.gov.au

Council works depot

Scadden Street
mail@bassendean.wa.gov.au

Wind in the Willows childcare

28-30 Wilson Street, Bassendean (Children 0-3 years)
2 Colstoun Road, Ashfield (Children 3-5 years)
willowssccc@gmail.com

Bassendean Youth Services

Steel Blue Oval
Corner of West Road and Guildford Road
bassendean@iinet.net.au

Seniors and Disability Services

2 Colstoun Road, Ashfield, WA 6054
sdsadmin@bassendean.wa.gov.au

Bassendean Volunteer Centre

50 Old Perth Road, Bassendean, WA 6054
volunteers@bassendean.wa.gov.au



Town of Bassendean

www.bassendean.wa.gov.au
ABN 20 347 405 108

