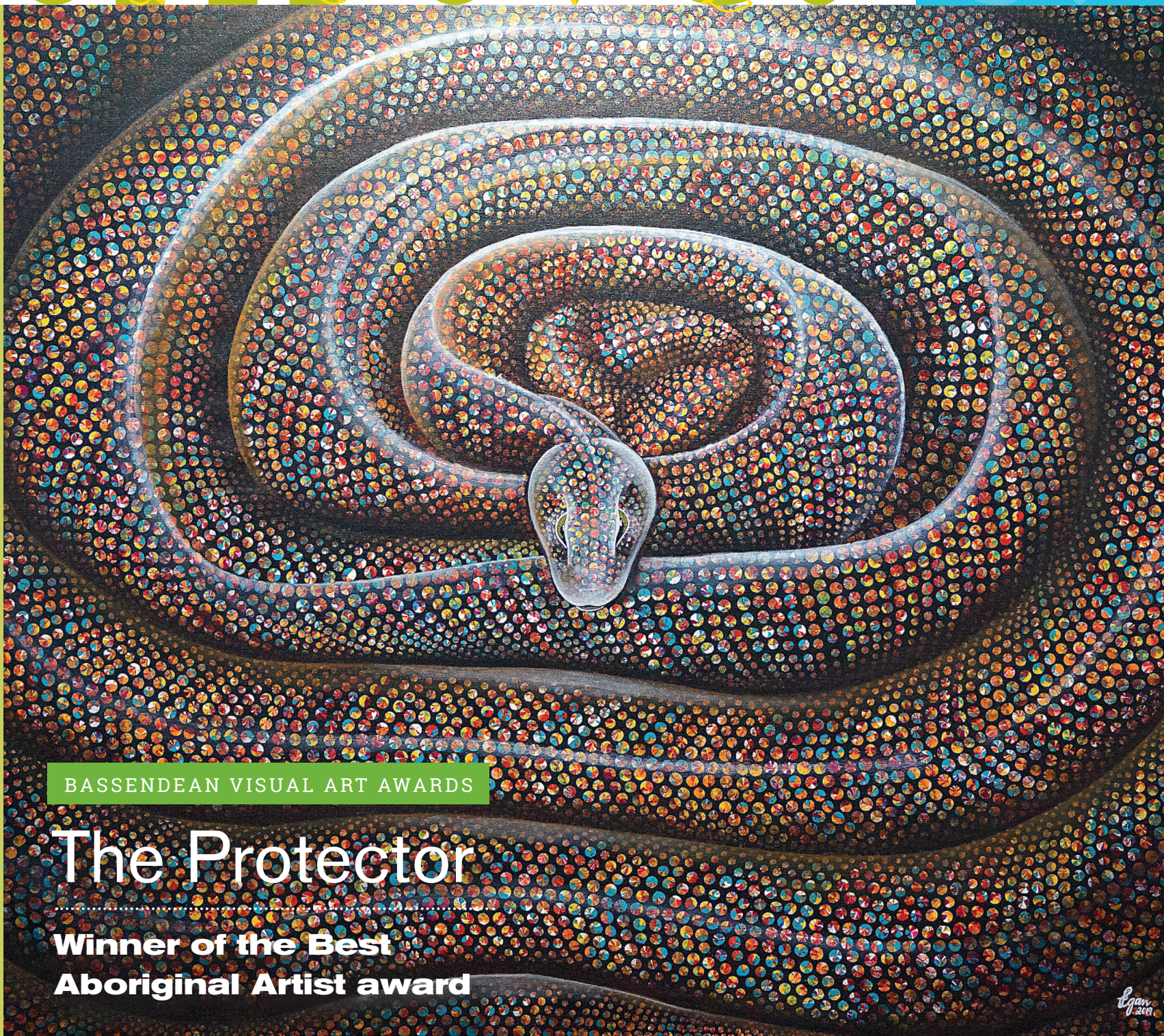


thrive.

#03

December
2019

CELEBRATING ASHFIELD | BASSENDEAN | EDEN HILL



BASSENDEAN VISUAL ART AWARDS

The Protector

Winner of the Best
Aboriginal Artist award

COMMUNITY & CULTURE

Meet the artists who painted this snake and other artworks

NEWS & VIEWS

Five great things about living here

SUSTAINABLE BASSENDEAN

Win prizes in our recycling crossword competition



thrive.

We're committed to updating you about what's happening in our community.

So get involved, have your say and work with us to make Bassendean, Ashfield and Eden Hill thrive.

ON THE COVER



VISUAL ART AWARDS

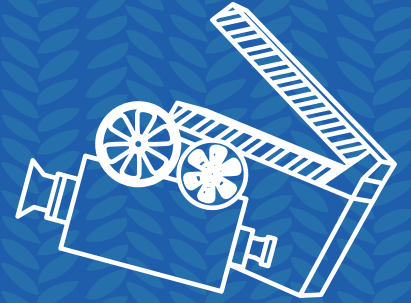
Cover photo: Loretta Egan's painting called the Protector, won her the Best Aboriginal Artist award at the 2019 Bassendean Visual Art Awards. She painted a giant sacred water snake "Gujida":

Loretta, who lives in Toodyay, is a proud Yamatji woman and speaks the Wajarri language. She learned dot painting from traditional landowners in Alice Springs. One of her paintings was presented to the Queen.

"In our culture, we believe before entering a waterhole you have to throw sand in. If you don't throw sand in, you could get sick. If a wind springs up, it can mean that the water snake is angry," she said.



PRESENTED BY



GET YOUR BEAN BAGS, PICNIC BLANKETS AND CHAIRS READY BECAUSE TELETHON COMMUNITY CINEMAS ARE READY TO START AT BIC RESERVE ON THE CORNER OF GUILDFORD ROAD AND WILSON STREET. GATES OPEN 6.30PM. MOVIES START AT 7.45PM.

PROFITS GO TO CHARITIES IMPROVING THE QUALITY OF LIFE OF CHILDREN WITH HEALTH OR PHYSICAL CHALLENGES.

THURSDAY 5 DECEMBER	Ride Like A Girl (PG)
FRIDAY 6 DECEMBER	The Angry Birds Movie 2 (PG)
SATURDAY 7 DECEMBER	Abominable (G)
SUNDAY 8 DECEMBER	Downton Abbey (PG)
MONDAY 9 DECEMBER	Movie 2040 (G)
WEDNESDAY 11 DECEMBER	Hustlers (MA15+)
THURSDAY 12 DECEMBER	Blinded By the Light (PG)
FRIDAY 13 DECEMBER	Dora and the Lost City of Gold (PG)
SATURDAY 14 DECEMBER	Maleficent: Mistress of Evil (PG)
WEDNESDAY 18 DECEMBER	Elliott the Littlest Reindeer
THURSDAY 19 DECEMBER	Hustlers (MA15+)
FRIDAY 20 DECEMBER	Last Christmas
SATURDAY 21 DECEMBER	Arctic Justice
SUNDAY 22 DECEMBER	Charlie's Angels
THURSDAY 26 DECEMBER	Last Christmas
FRIDAY 27 DECEMBER	Ford v Ferrari
SATURDAY 28 DECEMBER	Maleficent: Mistress of Evil (PG)
SUNDAY 29 DECEMBER	Knives Out (M)
WEDNESDAY 1 JANUARY	A Shaun the Sheep Movie
FRIDAY 3 JANUARY	Knives Out (M)
SATURDAY 4 JANUARY	Charlie's Angels



FREE MOVIE | 2040

7.45PM MONDAY 9 DECEMBER

PART OF THE TELETHON COMMUNITY CINEMAS

HOSTED BY THE TOWN OF BASSENDEAN

Award-winning director Damon Gameau (That Sugar Film) embarks on a journey to explore what the future could look like by the year 2040 if we simply embraced the best solutions already available to us to improve our planet and shifted them rapidly into the mainstream. It is structured as a visual letter to his four-year old daughter.

WONDERREALM

AT BASSENDEAN

VEGAS GLAMOUR FOR WONDERREALM

Get ready to feast and party at FRINGE WORLD in Bassendean in February 2020.

Friday 7, Saturday 8, Sunday 9 February

Friday 14, Saturday 15, Sunday 16 February

Book at https://fringeworld.com.au/whats_on/hubs/wonderrealm

Free entry, family friendly. Join us as the sun sets and enjoy our amazing surrounds in Old Perth Road.

Festival Director, Nella Fitzgerald said funding from the Town of Bassendean would bring visitors and exciting events such as:

The Dolce Vita Long Table Dinner, music, dance, laughter, Italian culture, delicious food and beverages await you at Little Italy

Childrens' entertainment and Superhero appearances from Optimus Prime, Batman, Ironman, Unicorns and theatre featuring the world premiere of "The Kid who Climbed a Mountain"

A launch party at Hawaiian's Bassendean

Ticketed shows at the Pink Flamingo Club and Dome Bassendean, featuring the WonderRealm Comedy Fest

Kitten D'Amour Cabaret

Shows "Souled Out! - Magic of Mowtown", "Fire and Ice" and roving entertainment.

Join us over two exciting, glittering and fun-filled weekends as the main street is transformed into a huge festival piazza with the energy and excitement of Fringe. Be amazed by the great array of performers who will dazzle you with their new acts and shows! Find us on Facebook,

www.facebook.com/wonderrealmbassendean/



After training as a pilot, Nella Fitzgerald switched her thoughts back to her childhood love of festivals and forged a career as an events organizer.



She staged her first event after seeing a multicultural children's choir perform in Italy and replicated it here with an orchestra.

In February 2019, she staged the first WonderRealm in Bassendean as part of the Fringe Festival, winning an award for the best free community event.

Inspired by that success, she secured a grant from the Town of Bassendean for up to \$50,000 to host the event again in February 2020.

"The greatest highlight for me is bringing people together and sharing food and music and entertainment," she said. "In Bassendean, we have a great place to live and visit and our community spirit is really valued."



FROM THE MAYOR

Dear Bassendean Community,

As the end of the year approaches, I am grateful for the opportunity that the festive season brings to slow down, reflect on the year and spend quality time together with friends and family.

Looking back over the past 12 months, there have been enormous changes in our local government and our Town. We have appointed a new CEO, recruited a new executive team and have sworn in a new Council. We are on the cusp of developing a new strategic community plan after an extensive consultation process with people of Bassendean. It is a very exciting time to be in Bassendean with so many opportunities ahead for our Town.

The alignment of a new Council being appointed, the restructured administration and a new community plan means that there are great opportunities ahead for all of us that call Bassendean home. I'm really looking forward to seeing what we can achieve together in the next few years.

As the mother of two young children, Christmas is also associated with great excitement and anticipation awaiting a visit from Santa. I want my kids to enjoy the magic of Christmas, but I also want to ensure that it is about more

than just opening our presents but that it is also about opening our hearts to the community of people around us.

No matter how much or how little each of us have, we all have the gifts to offer that are most needed by the community around us. We might offer the gift of inclusion by extending an invitation to a neighbour who is isolated and lonely; we could offer a gift of assistance to someone who is struggling to cope on their own; or we could offer our time to those who are feeling unloved or rejected. There are many simple things that we can do to bring joy at Christmas; my children like to create beautiful works of art to deliver to people in our street.

Christmas reminds us to take a moment to be a bit more kind, a bit softer and to notice those individuals around us who need someone to reach out to them.

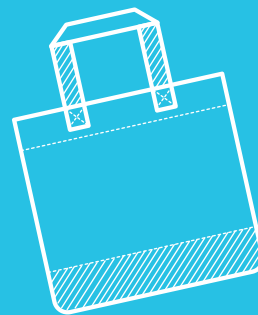
I am constantly inspired by the people who live here in Bassendean who live this out and make Christmas a special time. To me this kind of giving is what brings people together and is what Christmas is all about. It's these acts of generosity that build our community and truly reflect the Christmas spirit.

Cr Renée McLennan
Mayor



Tips for a low-waste Christmas

Buy locally: Take your own containers and bags to buy your seafood, meat and vegetables from local Bassendean producers.



RECYCLED TOILET PAPER FROM WASTELESS PANTRY, BASSENDEAN



Buy in bulk: Purchase nuts, seeds, grains, snacks, toilet paper and other Christmas treats from a bulk-food store where you can bring your own bags or use the paper bags and jars provided. This avoids the need for single use packaging.

Buy secondhand decorations: Swap decorations with a friend or family member or go online on Facebook and join a Buy Nothing group. Maybe your local landfill has a tip shop where you can get clean decorations for minimal cost?

When choosing gifts: Be mindful of the packaging that comes with it.

Get a real plant: Plastic Christmas trees are non-recyclable. You may instead decorate a real tree in a pot.

Buy experiences, not products: Most products we buy will end up in landfill just 18 months later. Perhaps make your own gift voucher for a family outing or take a friend out for a meal or visit a neighbor for a cuppa?

After Christmas: To dispose of decorations, put them in your red lid bin, take them to a charity store or swap them online for next year.



A NAKED SALAD FROM FRESH FRONTIERS, BASSENDEAN



FANTASTIC RESPONSE TO PLASTIC FREE

IN A 12-MONTH PILOT PROJECT TO REPLACE SINGLE-USE PLASTICS, LOCAL CAFES IN THE TOWN OF BASSENDEAN HAVE SWAPPED OUT 26,300 ITEMS WHICH WOULD HAVE GONE TO LANDFILL.

This amazing result came after the Town of Bassendean, known for its leadership and commitment to reducing plastic, was invited by the WA Waste Authority program to further reduce its 'plastic' footprint.

The program run by Boomerang Alliance targets plastic items found most commonly in bins and landfill, including water bottles, cups, cutlery, plates, straws, coffee cups and lids, takeaway containers and plastic bags.

Managers of food outlets, events and markets have committed to switch from single-use plastics by replacing them with reusable or compostable alternatives.

The Mayor, Cr Renee McLennan said: "We still have a long way to go but if we could all consider the small changes that we can make in our daily lives to reduce the use of single use plastics, we can make a significant difference to the state of our environment today and for future generations."

The Town of Bassendean will ramp up its recycling efforts over the next 12 months as it introduces three bins for general rubbish, recycling and food organics and garden organics, known as FOGO. It now employs a Waste and Recycling Coordinator and a Waste and Recycling Officer.

"Boosting our organisational capacity, signals Council's commitment to creating a better environment through waste and recycling; and reducing waste disposed of to landfill," she said.

We are working closely with the WA Waste Authority, the Eastern Metropolitan Regional Council and other stakeholder groups and the community to promote understanding of resource recovery.



EMRC CEO MARCUS GEISLER WITH NEW CHAIRMAN JAI WILSON AND DEPUTY CHAIRMAN DOUG JEANS.

Cr Jai Wilson (left) is the new chair of the Eastern Metropolitan Regional Council (EMRC), which works on behalf of member councils in Perth's east -- Town of Bassendean, Shire of Mundaring and Kalamunda, and Cities of Bayswater, Belmont and Swan. The EMRC provides services such as waste management and education, resource recovery, environmental management and regional development, delivering local and regional scale projects for the benefit of the region.





TRAINEES IN OUR PARKS



RICHARD WIGGERS, PARKS AND GARDENS TRAINEE

Our newest recruit in the Parks and Gardens team is Richard Wiggers, 17.

As part of a succession plan, the Town is once again employing trainees. Richard studies part-time at TAFE in Midland for a Certificate III in Horticulture.

Pictured adding some colour to Old Perth Road by planting a new garden bed outside Council's Customer Service Centre, Richard is regarded by his supervisors as a hard worker, conscientious and a self-starter.

From pitch to premises

When Bassendean mother Cassandra Tomeo launched her online dress hire store for curvy women in April, she didn't dream of opening her own store until she made a successful pitch at the Town of Bassendean's The Big Idea Pitching Event in June.

The good news is that Runway Regime, hiring dresses for women sized 14 to 22 and offering Australia wide delivery, opened its new premises in Hawaiian's Bassendean in October with the first three-month lease sponsored by the shopping centre as part of her prize package.

The 28-year-old businesswoman started her rental business for curvy and plus size women after being frustrated with her own shopping experiences and hearing stories from family and friends who also had difficulty trying to find dresses in their size.



CASSANDRA AND FRIENDS MODELLING HER CLOTHES

INTERGENERATIONAL SMILES

Sharing simple games brings smiles to young and older faces when our childcare children and seniors get together.



These intergenerational sessions in Ashfield are magical for all, with activities ranging from bingo to noughts and crosses, to reading and music.

It's about bringing together of the young and the young at heart.

Intergenerational relationships, responsibility and respect are key to promoting community wellbeing and a high priority for the Town of Bassendean.

The children from Wind in the Willows childcare at Ashfield and their older neighbours at the Seniors Centre regularly catch up to share stories, play traditional games, music and dance. To date much joy and happiness has been brought to both the young and older and many magical memories created.

Consider how you can form new connections in your community? Perhaps invite a young parent or older neighbour over for a cuppa or invite an elderly neighbour to your playgroup session.



WHAT'S ON

4 DECEMBER

Father Christmas at the Library

4 DECEMBER

Author Emily Paull at the Library

5 DECEMBER

Christmas craft at the Library

5 DECEMBER

Telethon Community Cinemas start

9 DECEMBER

Movie 2040 at BIC Park

15 DECEMBER

Carols by Candlelight

21 DECEMBER

Markets and Christmas Party

23 DECEMBER-1 JANUARY

Admin centre closed

6 JANUARY

Fun with Lego, Library

8 AND 15 JANUARY

Screenprinting, Library

26 JANUARY

Citizenship Ceremony

26 JANUARY

Australia Day Fireworks

7 FEBRUARY

Perth Fringe event, WonderRealm starts

28 FEBRUARY

Gravit8 Skatepark event

For more information about these events, visit www.bassendean.wa.gov.au

New executive team

In October 2019, Council achieved its goal of creating a new executive team:

Chief Executive Officer, Peta Mabbs

- Governance and HR
- Communications and Community Engagement
- Overall Responsibility for Staff
- Manage the organisation in line with the WA Local Government Act
- Liaison with Mayor and Councillors

Director Corporate Services, Paul White

- Finance, Rates and Procurement
- Customer Service
- Library and IT
- Children's and Youth Services
- Seniors and Disability Services

Director Community Planning, Luke Gibson

- Strategic Planning
- Placemaking
- Events, Arts and Culture
- Rangers
- Building
- Environmental Health
- Development Applications
- Volunteering
- Recreation

Executive Manager Infrastructure, Phillip Adams

- Roads, Cycling and Transport
- Waste Management and Recycling
- Parks and Gardens
- Civil Construction Projects
- Facilities Maintenance



PAUL WHITE, PHILLIP ADAMS, PETA MABBS, LUKE GIBSON

GREAT THINGS ABOUT THE TOWN



IN MARCH 2019, THE TOWN OF BASSENDEAN, SUPPORTED BY CONSULTANTS FROM CREATING COMMUNITIES AND COLLABORATIVE PLACE DESIGN, LAUNCHED BASSENDREAM OUR FUTURE.

Thank you to all residents involved in this project to develop a vision for the future of Ashfield, Bassendean and Eden Hill and inform the development of a new Local Planning Strategy.

The project team has worked alongside the local community and other stakeholders to understand community values; the character and spirit of the Town; and ideas for an overarching future vision.

Discussions centred on aspirations, opportunities and ideas for specific planning ideas and policies for the future of strategic planning in the Town. A summary of your feedback is provided below.

OVERVIEW OF “BASSENDREAM OUR FUTURE” FEEDBACK

PAST AND PRESENT

Top 5 great things about the Town

1. Proximity to the river
2. Proximity to Perth city
3. Access to public transport
4. Natural environment
5. Location (general)

Top 10 words to describe the Town now

1. Sense of community
2. Green and natural
3. Relaxed and quiet
4. Feels like a village / country town
5. Connection to history and heritage
6. Connected / accessible
7. Future potential
8. Proximity to the river
9. Progressive
10. Too quiet / uneventful

“THE REMAINING NATURAL GREEN SPACES AND THE RIVER ENVIRONMENT ATTRACTED ME. I’M SURE IT IS THOSE THINGS THAT CREATE A GREATER SENSE OF COMMUNITY HERE THAN WHAT YOU FIND ELSEWHERE.”

IN THE FUTURE

Top 5 themes to make living in the Town even better

1. Environmental management
2. Preserve / enhance open space
3. Events / arts / cultural initiatives
4. Improved connection / accessibility
5. Old Perth Road activation / revitalisation

Top 10 words to describe the Town in the future

1. Vibrant / active
2. Green and natural
3. Sense of community
4. Modern / progressive
5. Sustainable
6. Place of interest
7. Inclusive / inviting
8. Connected / accessible
9. Safe
10. Relaxed / quiet

“RESPECT FOR OUR TOWN’S GREEN SPACE, MATURE TREES, NATURAL HABITATS, WETLANDS AND THE RIVER. THESE ARE TAKEN FOR GRANTED AND NOT LOOKED AFTER. ANY TOWN CAN HAVE MORE SHOPS – OUR NATURAL HERITAGE IS WHAT MAKES BASSENDEAN SPECIAL AND PLEASANT TO LIVE IN.”

VALUES

Survey participants were asked to indicate their level of agreement with each of the below values. These values were informed by earlier engagement:

Bassendean, Ashfield and Eden Hill are welcoming communities where people know each other and have a “country town” feel.

“I LOVE THE OLD HOUSES AND ESTABLISHED GARDENS, WHICH GIVE A SENSE OF BEING IN A COUNTRY TOWN, ALL WHILE BEING CLOSE TO THE CITY.”

The local area has a rich history that is reflected in the community, the environment and the built form.

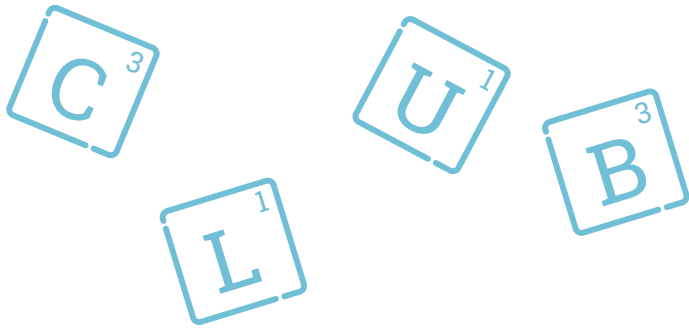
“HERITAGE SHOULD ALSO INCLUDE ABORIGINAL HERITAGE.”

A beautiful natural environment with an abundance of vegetation, trees, green open space and connection to the Swan River are important elements of the Town of Bassendean.

“THE BIGGEST VOLUNTEER GROUP IN BASSENDEAN IS THE GROUP INTERESTED IN THE NATURAL ENVIRONMENT.”

An accessible town centre in Bassendean (Old Perth Road) and easy access to the Perth CBD make Bassendean, Ashfield and Eden Hill attractive and convenient places to live.

“BETTER EMPHASIS ON INTEGRATING ASHFIELD AND EDEN HILL (IS NEEDED).”



MERRY

CHRISTMAS

Merry Christmas from the Bassendean Scrabble Club, who meet on Wednesdays. Find out more at www.scrabblewa.org.au/



Building a strong, inclusive and connected community is a priority for our Council. That commitment has included supporting community groups, providing transport through the help of our wonderful volunteers, providing mental health programs, opportunities to exercise and learn together,

hosting events to promote connection and networking, while building the capacity of others so that together we can strengthen our community to support one another. Search for the community directory at www.bassendean.wa.gov.au

Tips For A Safer Summer (From WA Police)



IT'S EASY TO BE COMPLACENT OVER THESE RELAXING SUMMER MONTHS BUT THAT'S WHAT THIEVES ARE COUNTING ON. REPORT ANY SUSPICIOUS ACTIVITY TO POLICE ON 131 444.

Keep your valuables safe

- Zip your handbag and don't leave your bag or phone unattended in your trolley.
- Be wary of anyone who tries to distract you.
- Keep minimal amounts of cash in your wallet.
- Park your car in well-lit areas and lock your car.
- Close all car windows, even at the petrol station.
- Remove any detachable items such as GPS or your car stereo.
- Have your keys in your hand before you get to your car.

Make your home safe

- On holiday, arrange for mail to be withheld or collected by a neighbour.
- Lock doors and windows at all times.
- Keep laptops, stereos and phones out of sight.
- Do not hide spare keys outside.
- Trim shrubs to increase visibility from the street.
- Activate your home alarm system when you are out.

LOOKOUT OVER ASHFIELD FLATS

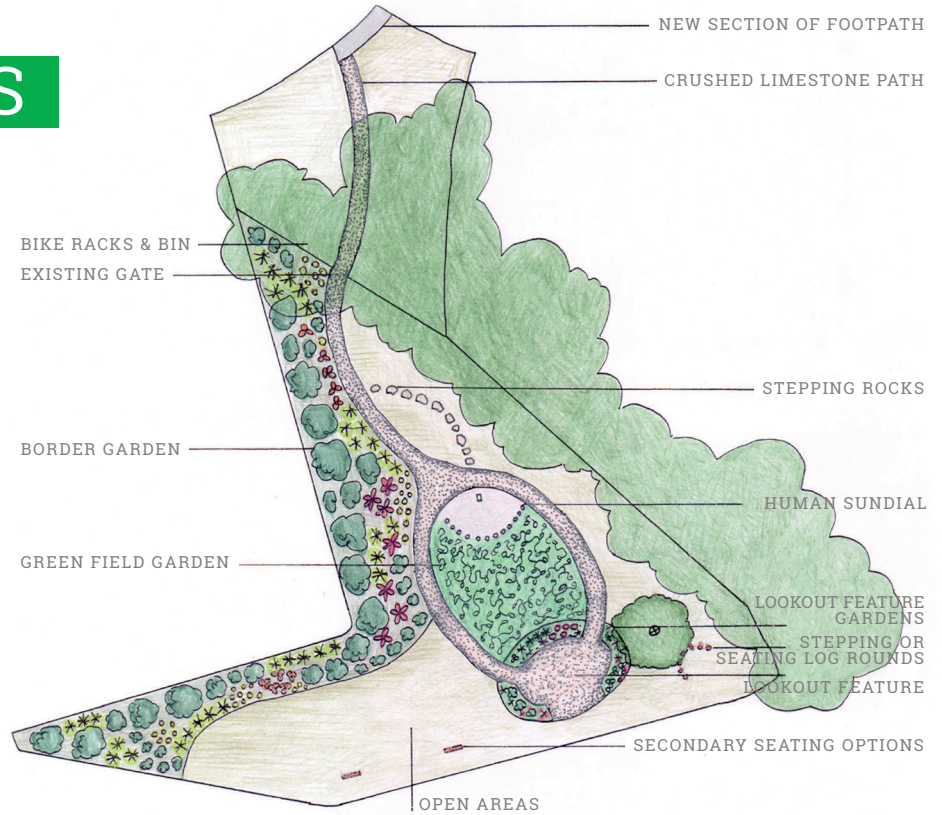
Seating is being planned as a lookout over the Ashfield Flats, with spectacular views of the wetlands.

Ashfield Community Action Network has hosted a series of community design sessions to plan a seating area as a lookout on land next to Villiers Street, to provide a viewing point.

The proposal will develop the site into a passive park for community use which is bushfire safe, maintains all views of surrounding properties and encourages quiet and contemplative use of the space.

The proposal is a partnership between Bassendean MP Dave Kelly, the Town of Bassendean, Ashfield CAN and the Western Australian Planning Commission (WAPC), which owns the site.

Features will include low seating, pathways, stepping-stones, gardens and a sundial.



2020

AUSTRALIA Day

CELEBRATIONS AND

Fireworks

FREE EVENT

5-9PM

SUN 26 JAN

ASHFIELD RES

GUILDFORD RD

ASHFIELD

Meet the artists



CAROL SEIDEL

Broadway resident Carol Seidel, who says her artistic talent is inherited, won the major prize with her drawings of Bassendean houses.

“My mother was an artist and my grandmother painted – that’s what young ladies did in late 1800’s,” she said.

Carol studied fine art at Perth Technical College in the early 1980s. Later, she and husband John went backpacking, landing in Mexico. They bought sterling silver and opened a jewellery import business in Melbourne, then returned to Perth in 1999.

In 2008, she staged a photographic exhibition in Mexico, funded by the Australian Government, Qantas and the Town of Bassendean as part of the Australian Trade Fair – an opportunity she cherished.

Carol remains a keen traveller, creating a visual diary of the places she visits by drawing the landscapes and interesting places. “You see more when you sit down and do a drawing, than just taking a photo,” she said.

A friend suggested she create a visual diary of houses in Bassendean. It was certainly a prize-winning idea.

“I am a very proud to be a Bassendean resident. I am forever grateful for this Town’s support, so I try to repay that back in spades with my community involvement as a volunteer and by taking photos and donating to the Library’s Local Studies Unit.”

OLIVIA FROM ST MICHAELS PRIMARY SCHOOL



PEOPLE’S CHOICE WINNER!

The Bassendean Visual Art Awards and Exhibition is now finished for another year.

We tallied the votes for the People’s Choice category and the winner is Val Patton for ‘Forest Blues’. This category was kindly sponsored by Mr Dave Kelly MLA and Mr Patrick Gorman MP.

Many thanks to the incredibly talented artists who made the exhibition spectacular with their entered artworks. This year the Town had the highest number of entries, highest number of sales and highest number of attendances!

Congratulations to all the winners and we hope you will all join us again in 2020.



Meet some of our artists who recently exhibited at the 2019 Bassendean Visual Arts Awards. Your stories encourage us to be creative and we admire your skills.



WINNER - CAROL SEIDEL



A Palm House at No 16, 24 Ave. That was built by the current owner's father. The locals say the house is 100 years old.



CLAYTON BRADBURY, HIGHLY COMMENDED

Meet the new council

OUR COUNCILLORS – HOME BY THE SWAN

CR HILARY MACWILLIAM, MAYOR RENEE MCLENNAN, CR JAI WILSON, CR JOHN GANGELL, CR SARAH QUINTON, DEPUTY MAYOR CR KATH HAMILTON AND CR CHRIS BARTY.





MARION CALLS TIME ON VOLUNTEERING

You may remember her from the school canteen, St Marks Church, as a first aider, sorting books in the school library or you may be in Arundel faction at Ashfield Primary School?

One thing for sure, the face and kindly assistance of volunteer Marion Arundel has touched many generations in our town.

At the sprightly age of 91, Marion has called time on her volunteering efforts.

"I've retired. I feel I have enough happy memories," she said.

Marion, who has lived in Ashfield since 1959, began volunteering when her three daughters started school, often making sandwiches for the canteen on the school verandah.

"I loved the job and all the kids."

A near fatal car accident in 1966 meant Marion not only gave up her canteen role but had to learn to walk and talk again.

As she recovered, she tended to St Marks Church in the mother's union, op shop and church council. For 17 years, she was a first aider with the St John Ambulance brigade, including as a volunteer during the Rod Stewart concert and the Queen's visit.

Marion, pictured with two of her daughters, volunteered in the school library until 1994, when a hand infection forced her out. Most recently, she spent 27 years taking bookings for the Bassendean Welfare Services now known as Community Transport.

So what skills do volunteers need? "Patience, confidentiality, be trustworthy and reliable," Marion said.

WANT TO VOLUNTEER?

So as one volunteer retires, who will take her place? If you have spare time and an interest in meeting others, contact your local school or community group to lend a hand.

Contact the Bassendean Volunteer Centre, to find out how you can lend a hand in your local community.

Phone: 9377 2191

Email: volunteers@bassendean.wa.gov.au

Recycling crossword competition

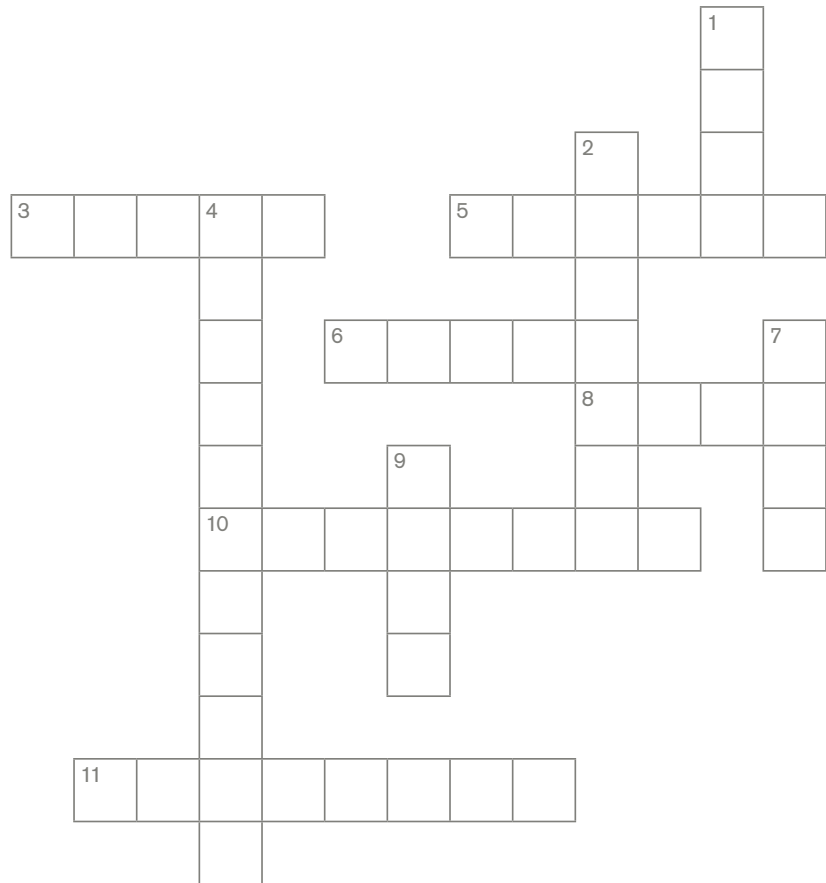
Win one of five recycling prizes.

ACROSS

- How many bins will we have?
- The colour of the recycling bin lid is?
- These wiggly creatures can eat your vegetable scraps.
- True or False. Washed milk cartons go in the yellow recycling bin?
- The O in FOGO stands for?
- Items that can't be recycled end up in?

DOWN

- The Town of Bassendean will introduce _____ on or before July 2020?
- Public events in Bassendean are free of _____.
- Recycling is good for the _____.
- A good Christmas gift is a _____ cup for hot drinks.
- When shopping, I take reusable _____ with me.



Name _____

Address _____

Email _____

Phone _____

Complete the crossword above, take a photo of it and email it to yoursay@bassendean.wa.gov.au by 4pm, 16 December. Or drop your completed crossword into the Customer Service Centre. See terms and conditions at www.yoursay.bassendean.wa.gov.au

THE TOWN OF BASSENDEAN WILL INTRODUCE A THREE-BIN SYSTEM BY JULY 2020 WITH:

- Red lid bin: General household waste that goes to landfill
- Yellow lid bin: Recyclable waste such as glass, paper and recyclable plastics
- Lime green lid bin: Food organics (FOGO) and garden organics which becomes compost.

Contact us

35 Old Perth Road, Bassendean, WA 6054
PO Box 87, Bassendean, WA 6934
Phone: (08) 9377 8000
mail@bassendean.wa.gov.au
www.facebook.com/bassendeancouncil

