

Ashfield  
Community  
Action  
Plan  
2009



# TABLE OF CONTENTS

1.	Introduction .....	2
1.1	What is the Ashfield Community Action Network (Ashfield CAN)?	2
1.2	How was the Plan developed and who was involved?.....	3
2.	Background.....	7
2.1	The Ashfield Community.....	7
2.2	What is Ashfield’s Plan for the future?.....	8
3.	Discussion of Key Outcomes .....	12
3.1	Reasons for Liking Ashfield .....	12
3.2	Suggestions for Improving Ashfield .....	13
4.	Actions.....	16
5.	Further Information .....	18

## APPENDIX

Appendix A	Ashfield CAN Terms of Reference
Appendix B	Bassendean Briefings Special Edition
Appendix C	Ashfield Community Profile
Appendix D	Community Workshop Outcomes Report
Appendix E	Focus Group Discussions Outcomes Report
Appendix F	Community Survey Outcomes Report

# 1. Introduction

The Town of Bassendean has worked in partnership with the stakeholders and residents of Ashfield in deciding what sort of future residents want for their community and developing an action plan to enhance Ashfield in the coming years.

The Ashfield Community Action Plan (ACAP) describes the aspirations of stakeholders and community members and identifies specific actions to be implemented in the short, medium and long term to improve the wellbeing of the community.

The plan is a road map for enhancing Ashfield by specifying:

- Aspirations for enhancing Ashfield (Initiatives)
- What will be done to achieve aspirations (Activities)
- Who will do it (Partnerships)
- When will it be done (Timeline)
- How it will be done (Resources – money, people and materials)

The ACAP has adopted the 'action areas' that have been used in the Victorian Neighbourhood Renewal Program (for more information visit [www.neighbourhoodrenewal.vic.gov.au](http://www.neighbourhoodrenewal.vic.gov.au)). These categories allow the actions to be grouped into key focus areas. The action areas are as follows:

- Community Pride and Participation
- Housing and the Physical Environment
- Employment, Learning Opportunities and Learning Economies
- Personal Safety and Crime
- Health and Wellbeing
- Government Responsiveness

The ACAP is one of several initiatives to plan for Ashfield's future. The 'Vision 2030: Community Plan' and the 'Strategic Plan 2007 – 2017' provide the strategic direction for the Town of Bassendean. The ACAP takes this vision to a local level and determines specific actions to achieve this vision and create a vibrant future for Ashfield.

## 1.1 What is the Ashfield Community Action Network (Ashfield CAN)?

The Ashfield CAN is a group of stakeholder and community members who have an interest or stake in Ashfield and a commitment to making

Ashfield a better place to live. It includes a diverse group of stakeholders and community members including:

- People that live in Ashfield
- People that own a business or work in Ashfield
- People that run institutions in Ashfield
- People that provide a service in Ashfield or to its residents
- Council staff
- Elected members

The Ashfield CAN group meets on a regular basis to oversee and manage the implementation of the ACAP.

Refer to Appendix A for the Ashfield CAN Terms of Reference.

## 1.2 How was the Plan developed and who was involved?

The ACAP was developed in consultation with key stakeholders and community members. A thorough stakeholder identification process was conducted to ensure that key stakeholders and community members were informed about the project and invited to participate in the consultation and the ongoing development and implementation of the plan.

The following consultation process was conducted in the development of the ACAP.

### Stakeholder Identification

Key stakeholders and community members to be invited to participate in the development, implementation and / or management of the ACAP were identified during a brainstorming session with the Town of Bassendean. These stakeholders were then invited to a focus group discussion and / or the community workshop.

The key stakeholder groups identified included:

- Safety, business, transport and planning;
- Parents, children, Culturally and Linguistically Diverse (CALD), education;
- Youth;
- Town of Bassendean elected members;
- Seniors, people with disabilities, recreation and health; and
- Indigenous.

Additional stakeholders identified throughout the consultation process were also included in the stakeholder list and invited to participate in the consultation process.

## Community Workshop

A community workshop was held on Saturday 13 September 2008 from 10.00 am to 12.30 pm at the Ashfield Primary School. Community residents were invited to attend the workshop through a notice in a special edition of the Bassendean Briefings that was dedicated to the ACAN project.

The special edition included background information on the ACAN project, an invitation to attend the community workshop and the community survey. A copy of the Bassendean Briefings was delivered to all dwellings in Ashfield (484 dwellings) in late August 2008.

The workshop was attended by 34 people who were asked to work in groups to explore the following questions:

- What do you like about living in Ashfield?
- What would you like to improve in Ashfield?
- How could these improvements be achieved?

Participants from the following stakeholder groups participated in the community workshop:

- Community Residents
- Town of Bassendean, Elected Members
- Town of Bassendean Staff
- Local Businesses
- Ashfield Sport and Soccer Club

## Focus Group Discussions

Six focus group discussions were conducted with key stakeholders and community representatives in September 2008. To explore suggestions for making Ashfield a better place to live, the following were discussed:

- What is working in Ashfield?
- What needs to be improved to make Ashfield a better place to live?
- Strategies for making Ashfield a better place to live

A total of 39 people from the following 21 organisations participated in the focus group discussions:

Anzac Terrace Primary School P&C	Ashfield Primary School
Ashfield Stakeholder Advisory	Bassendean Pharmacy

## Committee

Community Physiotherapy Services	Cultural Advancement Group
Cyril Jackson Senior Campus	Department for Child Protection
Department for Communities	Department for Communities, Office for Children and Youth
Department of Health	Department of Indigenous Affairs
Department for Housing and Works - Midland	Department for Housing and Works - Mirrabooka
Disability Services Commission	Local Member of Parliament (MP)
Public Health Unit - North Metro Area Health Service	Town of Bassendean Staff from each directorate
Town of Bassendean Elected Members	WA Police
Wind in the Willows Child Care Centre	

## Community Survey

As mentioned earlier, the community survey was included in the special edition of the Bassendean Briefings which was distributed to all Ashfield dwellings in late August 2008. A total of 74 surveys were returned.

The community survey asked residents to provide feedback about:

- What they like about living in Ashfield
- Things that need to be improved in Ashfield to make it a better place to live in
- What can be done to make the improvements
- What they think the community can do to help make Ashfield a better place to live in
- Which topics are of most importance for improving life in Ashfield

Refer to Appendix B for the Bassendean Briefings Special Edition.

## Stakeholder and Project Team Meetings

The Town of Bassendean established the Stakeholder Advisory Committee (SAC) to:

- Facilitate communication between the Town of Bassendean, Government Agencies and members of the Ashfield Community;
- Assist the Town of Bassendean in engaging the local community on matters of importance to Ashfield;
- Provide advice to the Town of Bassendean on residents issues in the Ashfield community and of strategies to foster community development; and

- Work with the Town of Bassendean on solutions to issues identified by residents as requiring improvement.

As key stakeholders in the ACAP project, a presentation was made to the Committee on 10 September 2008 at the Town of Bassendean offices to inform them of the methodology for developing the ACAP and obtain feedback.

Ongoing project team meetings with the Town of Bassendean occurred throughout the project to review the progress of the project and plan for the next steps.

### Ashfield CAN

The key stakeholders and community members who participated or were identified throughout the consultation process were invited to join the Ashfield CAN (see Appendix X for a list of stakeholders invited to attend the workshop and a list of who attended).

A meeting was conducted with the Ashfield CAN on Tuesday, 7 April and Thursday, 16 April at the Town of Bassendean to:

- Explain the background to the ACAP project and the methodology;
- Present the key findings of the consultation process and the issues identified;
- Agree on strategies for addressing the issues;
- Prioritise the issues identified;
- Determine the terms of reference for the ACAN; and
- Determine the meeting frequency, length, time, venue, etc. for the ACAN.

These meetings will contribute to the ongoing identification and implementation of actions to build a stronger community at Ashfield.

## 2. Background

### 2.1 The Ashfield Community

Ashfield is located within the Town of Bassendean, a Western Australian Local Government in Perth's Eastern Region. Only 10 kilometres from the centre of Perth and 5 minutes from the Swan Valley vineyards, it has a total area of 11 square kilometres. It is located on the Swan River, with the City of Swan to the north and the City of Bayswater to the west. The Town serves a population of about 14,000 people. Ashfield has a total of 1,167 people and 548 private dwellings on an area of 0.7 square kilometres.



Location of Ashfield

There were 1,167 persons usually resident in Ashfield: 52.4% were males and 47.6% were females. Of the total population in Ashfield, 7.3% were Indigenous persons which is higher than the Town of Bassendean (2.8%) and Western Australia (3.0%). The majority of Ashfield residents (66%, 769) were born in Australia and 10% (122) were born in the United Kingdom.

Ashfield has a total of 548 private dwellings: 94% were separate houses, 3% were semi-detached, row or terrace houses, townhouses etc, and 2% were flats, units or apartments. The majority of dwellings are being purchased (29%, 142) or fully owned (25%, 119).

Ashfield is served by metropolitan train and bus services. The International Airport terminal is approximately 20 minutes and the Domestic Terminal is 10 minutes from Ashfield by car. Ashfield Train Station is located eight stations from Perth on the Midland Line.

Ashfield has the following significant features:



- Ashfield Flats/Ashfield Parade Reserve – a picturesque wildlife reserve and conservation area adjoining Sandy Beach Reserve.
- Gary Blanch Reserve – a local public open space site.
- Cyril Jackson Senior Campus – a senior school campus, catering for a wide-range of senior schooling studies. Students range from 16 year olds to people in their 50's and 60's.
- Cyril Jackson Physical Education and Community Recreation Centre – a fully equipped gymnasium and recreation centre shared between the Department of Education and Training and the Town of Bassendean.
- Ashfield Commercial and Retail – includes an IGA supermarket, fast food shops, a photographer and deli.
- Ashfield Soccer Club

Refer to Appendix C for the Ashfield Community Profile.

## 2.2 What is Ashfield's Plan for the future?

### Vision 2030 Community Plan

The Town of Bassendean engaged community members and key stakeholders in the development of a shared vision for future of the Town of Bassendean. The vision statement for the strategic planning initiative, Vision 2030 is:

“By 2030, the Town will be a highly accessible urban village offering a cohesive, vibrant and diverse community lifestyle and a thriving business economy within a quality built and natural environment.”

The key objectives of Vision 2030 are categorised into the following six themes:

- Green on the river environmental stewardship
- A Safe and healthy community
- A vibrant local economy
- Arts, heritage and culture
- The global village and lifelong learning

For more information visit:

*[http://www.bassendean.wa.gov.au/7\\_info\\_feedback/pdfs/Vision2030-Community-Plan.pdf](http://www.bassendean.wa.gov.au/7_info_feedback/pdfs/Vision2030-Community-Plan.pdf)*

## Strategic Plan 2007 – 2017

The Strategic Plan 2007 – 2017 is a framework for the sustainable management of the Town of Bassendean's resources for the next five years.

The Mission is:

"To strengthen our community, foster economic prosperity and protect and enhance the environment."

The Values which guide the behaviour and decisions of the Town of Bassendean and which guide how to lead and serve the community are:

- People
- Excellence
- Heritage
- Partnerships
- Sense of Place

The Key Result Areas to meet the needs of current and future generations are:

- Environmental Enhancement
- Community Wellbeing
- Economic Vitality

For more information visit:

[http://www.bassendean.wa.gov.au/7\\_info\\_feedback/pdfs/Strategic\\_Plan\\_2007-2017.pdf](http://www.bassendean.wa.gov.au/7_info_feedback/pdfs/Strategic_Plan_2007-2017.pdf)

## Ashfield SAC Meeting Minutes

The following are a summary of the key issues from the Ashfield SAC meeting minutes:

- Proportion of Homes West housing within Ashfield – residents would like to see a reduction of these housing types and care taken in the selection of tenants.
- Antisocial behaviour and criminal activity – there are often discarded needles found, harassment of residents (particularly from Homes West tenants) and antisocial behaviour in various areas such as parks.
- Indigenous community issues – ongoing history of feud between Aboriginal families in the Ashfield area. Escalating issues lead to a 'riot' in January 2007.
- Ashfield Town Centre lighting improvements to be made around the train station, oval and shopping precinct in Colstoun Road (and various other areas).

- Transit Oriented Development corridor planning – concern expressed at both the possibility of not achieving the desired outcome and insufficient time for adequate community consultation and input. The following were of concern to residents:
  - Residents would like to see possibility of extending the rail line beyond Midland;
  - Questionable that there are no benefits in increasing bus service integration with train services at Meltham, Ashfield, Bassendean or Success Hill; and
  - Concern about reference to Ashfield Primary School – school efficiency or effectiveness is independent of student numbers and should not be linked.
- Cycleway Planning to be included in future budget submission – connection from the city through Ashfield to Bassendean and onwards.
- Proposed redevelopment of old Ashfield Tavern site to be rejuvenated with high quality housing.
- Ashfield foreshore redevelopment requires upgrades including footpaths and installation of seating and lighting. Management Plan for Ashfield Parade Foreshore Redevelopment is currently being implemented.
- Ashfield Reserve has a lack of rubbish bins.
- There should be an audit process for identifying and install footpaths where they are needed.
- Condition of roads, verges, pavements and footpaths at various locations is in need of attention and repair.
- It would be desirable to employ a community worker to address issues in Ashfield almost exclusively.
- Youth related community concerns – lack of funding for programs and projects to support youth.

For more information visit:

*[http://www.bassendean.wa.gov.au/3\\_your\\_council/agendas\\_minutes/community-committee-list.html](http://www.bassendean.wa.gov.au/3_your_council/agendas_minutes/community-committee-list.html)*

## Regional Community Safety and Crime Prevention Plan 2007 – 2010

The Regional Community Safety and Crime Prevention Plan 2007 – 2010 identifies priorities and strategies for the Town of Bassendean, City of Swan and Shires of Mundaring and Kalamunda (the region) as well as strategies for the Town of Bassendean.

The priorities and strategies identified in the Plan were developed through analysis of available evidence and in consultation with the Town of

Bassendean, relevant State government agencies and community organisations.

The key areas highlighted from the Regional Community Safety and Crime Prevention Plan are:

- Crime management involving police, ranger/security patrols, working with businesses, and Crime Prevention Through Environmental Design (CPTED);
- Improving community safety through awareness raising programs, planning in combination with CPTED and development of Safety House programs;
- Neighbourhood programs to encourage understanding and acceptance within the community;
- Addressing road safety by reducing unsafe behaviour and raising community awareness of safe behaviours;
- Support and programs for youth, families and those at risk; and
- Successful implementation through partnerships, collaboration and links.

For more information visit:

<http://www.crimeprevention.wa.gov.au/Portals/0/PDF/bassendean-cscppplan-2007-10.pdf>

### Ashfield Precinct Plan

Planning for a major activity centre around Ashfield train station is being investigated as part of the Maylands-Guildford activity corridor project, a Network City demonstration project. Network City indicates the Ashfield area as having the potential for a major activity centre based on Ashfield:

- Being strategically located within the middle ring of Perth, midway along the Perth-Midland rail line and adjacent to a regional highway linking the major activity centres at Morley and Perth Airport.
- Containing large areas of relatively under utilised land.

The Ashfield area therefore represents a prime opportunity for a major employment based and transit oriented activity centre.

The project will involve the preparation of a precinct plan for the Ashfield Train Station precinct and a strategic implementation guide that will enable stakeholders to make informed decisions about the future use of land within and adjacent and connected to the study area.

For more information visit:

[http://www.dpi.wa.gov.au/cityregionalplanning/15678.asp#Ashfield\\_precinct\\_plan](http://www.dpi.wa.gov.au/cityregionalplanning/15678.asp#Ashfield_precinct_plan)

## 3. Discussion of Key Outcomes

Refer to the following appendices for the outcomes reports for each of the consultation activities:

- Appendix D Community Workshop
- Appendix E Focus Group Discussions
- Appendix F Community Survey

The key outcomes of the community workshop, focus group discussions and community survey are summarised below.

### 3.1 Reasons for Liking Ashfield

The most popular reasons for liking Ashfield were:

- Location, location, location – resident's described Ashfield as strategically located, close to everything including the city, the river, public transport, shopping, other town centres and many other places.
- Nature, trees and public open space were also mentioned as a reason for liking Ashfield.
- Community and Neighbours – made up of multicultural, diverse, long term, quiet and friendly residents.

Other reasons for liking Ashfield included:

- Large blocks, low density with not many units;
- High property values and opportunity to capitalise on development;
- A suburb with potential;
- Cycling and walking paths;
- Character and lifestyle - small suburb, rural feel, safe and unpretentious;
- Parks and recreation opportunities for Children;
- Beautiful place;
- Birdlife;
- Transport – accessible to rail, east-west and north-south routes;
- Sporting and recreation facilities;
- Shops in the area; and
- Industrial and residential in same area

## 3.2 Suggestions for Improving Ashfield

### Housing and the Physical Environment

Improve housing and the physical environment in Ashfield by:

- Attracting development in the area;
- Improving and expand infrastructure and facilities in the area;
- Exploring opportunities for café or restaurants at the river;
- Improving Ashfield train station;
- Improving lighting in the area especially at parks and near river;
- Rehabilitating the river foreshore area;
- Beautifying streetscapes and verges in the area;
- Undergrounding power;
- Reducing the amount of industrial area;
- Attracting better rental tenants;
- Reducing the proportion of Homeswest in the area;
- Improving the flow of students leaving trains and walking to school;
- Improving the commercial precinct (e.g. variety of shops, safety);
- Better integrating Ashfield with the surrounding areas;
- Improving accessibility to the river and throughout the area;
- Preserving the environment;
- Cleaning and maintaining public open spaces;
- Improving public transport; and
- Improving Pearson Street Park.

### Employment, learning opportunities and local economies

Improve employment, learning opportunities and local economies in Ashfield by:

- Ensuring that school kids are attending school / preventing truancy;
- Educating the community about sustainability management of resources;
- Providing a toy library and playgroup at Ashfield;
- Acknowledging and encouraging the contribution of Cyril Jackson students on the local community and economy;
- Improving the reputation of Ashfield Primary School and increasing number of local students; and

- Attracting tourism into the area.

## Personal safety and crime

Increase personal safety and crime in Ashfield by:

- Introducing neighbourhood watch;
- Installing CCTV at shops near ATM;
- Controlling traffic in the area (e.g. speeding and hooning);
- Reporting antisocial behaviour to the Police;
- Reporting street uncleanliness to the Council;
- Rangers identifying and reporting safety and cleanliness issues;
- Improving lighting at shopping centre and parks;
- Reducing graffiti, vandalism and littering;
- Improving perception of safety in Ashfield; and
- Ensuring new developments incorporate CPTED principles.

## Health and wellbeing

Improve the health and wellbeing of people in Ashfield by:

- Broadening the recreational opportunities for the community (e.g. sports for women);
- Increasing the utilisation of the river;
- Providing improved playgrounds in the area;
- Supporting young children and families;
- Creating a school canteen;
- Improving services for young people in Ashfield;
- Educating young people about important issues;
- Providing support to struggling individuals and families;
- Creating a health precinct within Ashfield;
- Providing support to indigenous mothers and families; and
- Providing services for indigenous elders.

## Government responsiveness

Improve government responsiveness in Ashfield by:

- Inviting Aboriginal representation on decision making groups;
- Improving communication between the Town of Bassendean and the community (e.g. webpage for Ashfield);

- Improving access to government services; and
- Improving the allocation of funding.

## Community pride and participation

Increase community pride and participation in Ashfield by:

- Improving the sense of community (e.g. change the name, pride);
- Changing the negative perception of Ashfield;
- Preventing feuding families from living in Ashfield;
- Connecting more with the local indigenous community and other ethnic groups;
- Connecting young people from different cultural groups and indigenous;
- Creating optimism in Ashfield;
- Attracting families into the area;
- Creating a heart / core in Ashfield;
- Promoting and celebrating the artists that live in Ashfield;
- Improving the look and feel of Ashfield;
- Recognising Aboriginal people's lives and history;
- Increasing self-esteem and pride in being Aboriginal.



## 4. Actions

It is important to note that actions for improving the wellbeing of the Ashfield community can occur to address different areas of community life including:

- Housing and the Physical Environment
- Employment, learning opportunities and local economies
- Personal safety and crime
- Health and wellbeing
- Government responsiveness
- Community pride and participation

It is important to keep these in mind in the identification and implementation of the actions to ensure that all aspects of community life are considered and addressed.

## 5. Further Information

For further information please contact:

Name	Graeme Haggart
Position	Director Community Development
Organisation	Town of Bassendean
Phone	(08) 9377 8016
Email	ghaggart@bassendean.wa.gov.au

# APPENDIX A

Ashfield CAN

Terms of Reference

# **Ashfield CAN Terms of Reference**

Introduction

Purpose

Objectives

Membership and Roles

Meetings

# APPENDIX B

Bassendean Briefings Special Edition

ACAP and Community Survey

# PRESS RELEASE

## Development of the Ashfield Community Action Plan (ACAP)

We are developing an action plan to enhance Ashfield in the coming years. The Ashfield Community Action Plan (ACAP) is a document that specifies actions that will be taken to improve the wellbeing of the community in Ashfield. Actions are organised under different topics and timeframe (short, medium and long term). We will involve the community and stakeholders in the process of developing the ACAP.

The ACAP is one of several initiatives that we have taken to plan for Ashfield's future. In previous years we developed the 'Vision 2030: Community Plan' and the 'Strategic Plan 2005-2010' ([www.bassendean.wa.gov.au](http://www.bassendean.wa.gov.au)), which provide the strategic direction for the Town of Bassendean. The ACAP will take this vision and plan further to determine what actions will be taken to achieve these in Ashfield.

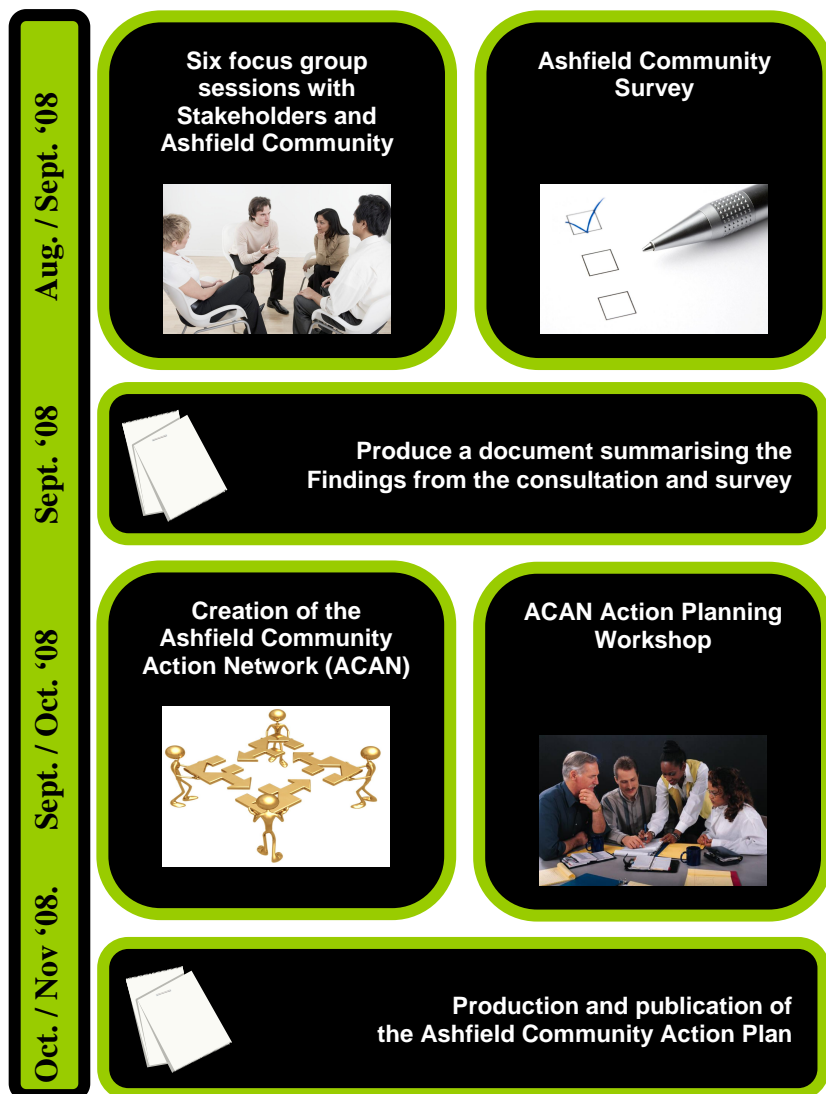
We have decided to adopt the 'action areas' that are used in the successful Neighbourhood Renewal program ([www.neighbourhoodrenewal.vic.gov.au](http://www.neighbourhoodrenewal.vic.gov.au)) being implemented in Victoria. These action areas are listed below and will be used to develop and prioritise actions in the short, medium and long term.

- » Community pride and participation
- » Housing and the physical environment
- » Employment, learning opportunities and local economies
- » Personal safety and crime
- » Health and wellbeing
- » Government responsiveness

### Consultative Process to Develop the ACAP

We will involve the community and stakeholders in different ways through the process shown in the diagram below. At the same time we will keep the broader community informed through:

- » A project link in our website ([www.bassendean.wa.gov.au](http://www.bassendean.wa.gov.au))
- » Newspaper advertisements
- » Project update sheet at the end of the project
- » A project information line where you can contact us (Philip Baker on 9377 8000 or email: [pbaker@bassendean.wa.gov.au](mailto:pbaker@bassendean.wa.gov.au))



## How You Can Get Involved

We would like to hear from you through one or both of the following:

1. **Ashfield Community Survey:** Please fill out the short survey attached to this Bassendean Briefing and send it back to us by posting the pre-paid envelope.
2. **Ashfield Residents' Workshop/Focus Group:** We will be conducting a focus group with members from the community to discuss the things that need to be improved in Ashfield and the actions that could be taken to make these better. Please give us a call or send us an email if you would like to participate in this focus group to be held on Saturday, 13th September from 10 am to 12:30 am in Ashfield Primary School Library, 65 Margaret Street, Ashfield, 6054.

## Further Information and Feedback

If you would like further information or want to make a suggestion please contact Philip Baker at:

Email: [pbaker@bassendean.wa.gov.au](mailto:pbaker@bassendean.wa.gov.au)

Phone: 9377 8000

# Ashfield Community Action Plan (ACAP)

## Community Survey

Your participation through this survey will be used to decide the key issues to be improved in Ashfield in the following years and the actions that will be taken to achieve this. Thank you for your time and participation in this survey!

---

1. Are you:

Female

Male

2. To what age group do you belong?

under 14 years

55 to 64 years

15 to 24 years

65 years and over

25 to 54 years

3. What is your cultural background? \_\_\_\_\_

4. What do you like about living in Ashfield?

---

---

---

---

5. What are the things that need to be improved in Ashfield to make it a better place to live in?

---

---

---

---

---

---

6. What can we do to make these improvements?

---

---

---

---

---

---



7. What do you think the community can do to help make Ashfield a better place to live in?

---

---

---

---

---

8. Which of these topics do you think are more important for improving life in Ashfield? Please rank them from 1 to 6 with 1 being the most important and 6 the least important.

- Community pride and participation
- Housing and the physical environment
- Employment, learning opportunities and local economies
- Personal safety and crime
- Health and wellbeing
- Government responsiveness

9. Would you consider helping in implementing some of the actions that you have suggested?

- Definitely Not       Probably Not       Unsure       Probably Yes       Definitely Yes

10. Would you like to be kept informed of this project?

- Yes       No

11. If yes, please provide your contact details:

Name: \_\_\_\_\_

Telephone: \_\_\_\_\_ Email: \_\_\_\_\_

Postal address: \_\_\_\_\_

*Thank you for helping us to develop the Ashfield Community Action Plan!*

# APPENDIX C

## Ashfield Community Profile

December 2008

The Community Profile for Ashfield is designed to inform the City of Bassendean, key stakeholders and the general public.

The profile is based on the 2006 Census of Population and Housing published by the Australian Bureau of Statistics (ABS). Most of the data is taken directly from QuickStats. The following is an explanation of the ABS QuickStats:

“QuickStats provides a summary of key census data relating to persons, families and dwellings. QuickStats is a selection of general and topical information about a chosen area. The data covers a range of social, economic and demographic statistics, and includes an Australian benchmark feature.”

*Source: ABS [www.abs.gov.au](http://www.abs.gov.au)*

## FIGURES

Figure 1 – Town of Bassendean Local Government Area

Figure 2 – Location of Ashfield

Figure 3 – Ashfield Station Layout

Figure 4 – Ashfield Walking Trails

Figure 5 – Ashfield Residents' Country of Birth

Figure 6 – Educational Institution Attended by Ashfield Residents (2006 Census)

Figure 7 – Need for Assistance by Ashfield Residents (2006 Census)

Figure 8 – Ashfield Residents Who Volunteer (2006 Census)

Figure 9 – Number of Cars per Dwellings in Ashfield (2006 Census)

Figure 10 – Type of Internet Connection in Ashfield (2006 Census)

Figure 11 – Ashfield Crime Statistics 2005 - 2007

## TABLES

Table 1 – Person Characteristics (2006 Census)

Table 2 – Age

Table 3 – Australian Citizenship

Table 4 – Languages Spoken at Home

Table 5 – Religious Affiliation

Table 6 – Marital Status

Table 7 – Labour Force (Population Aged 15 Years and Over)

Table 8 – Occupation (Employed Persons 15 Years and Over)

Table 9 – Income (Population Aged 15 Years and Over)

Table 10 – Family Characteristics

Table 11 – Dwelling Characteristics – Private Dwellings

Table 12 – Tenure Type – Occupied Private Dwellings

Table 13 – Landlord Type – Occupies Private Dwellings Being Rented

## Where is Ashfield located?

Ashfield is located within the Town of Bassendean, a Western Australian Local Government located in Perth's Eastern Region. Only 10 kilometres from the centre of Perth and 5 minutes from the Swan Valley vineyards, it has a total area of 11 square kilometres. It is located on the Swan River, with the City of Swan to the north and the City of Bayswater to the west. The Town serves a population of about 14,000 people.



Figure 1 – Town of Bassendean Local Government Area

Ashfield has a total of 1,167 people and 548 private dwellings on an area of 0.7 square kilometres.



Figure 2 – Location of Ashfield

## Transport

### Bus and Train

Ashfield is served by metropolitan train and bus services. The International Airport terminal is approximately 20 minutes and the Domestic Terminal is 10 minutes from Ashfield by car. Ashfield Train Station is located eight stations from Perth on the Midland Line. It takes approximately 14 minutes when stopping at all stations and 11 minutes when stopping at McIver, Claisebrook, Maylands stations. The following diagram illustrates the location and layout of the Ashfield Train Station.

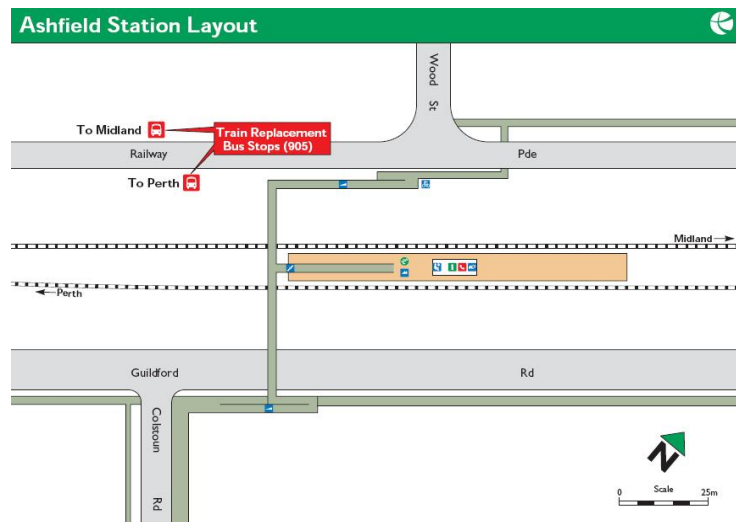


Figure 3 – Ashfield Station Layout

### Walking

There is a 2.6 km walking trail along the Ashfield Flats which takes approximately 30 minutes. It starts at the boardwalk, passes through significant wetlands and ends at Sandy Beach Reserve.

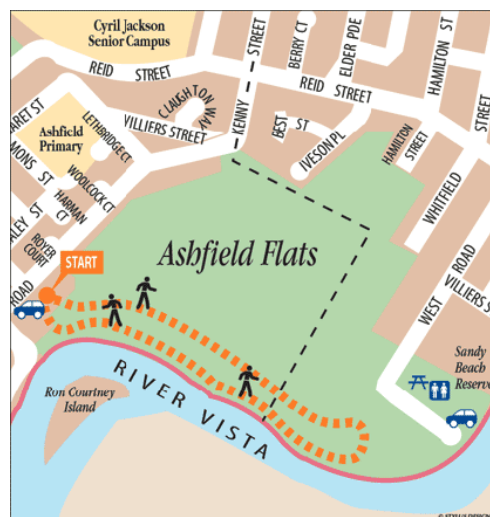


Figure 4 – Ashfield Walking Trails

## **Major features**

### Public Open Space

#### **Regional Public Open Space**

*Definition: Servicing a 10km catchment area; may have an environmental impact; caters for large groups; and generally 50,000m<sup>2</sup> plus in size.*

Ashfield Flats/Ashfield Parade Reserve is classified as Regional Public Open Space. Ashfield Flats is a picturesque wildlife reserve and conservation area adjoining Sandy Beach Reserve. The area has been protected for future generations by being designated a bush forever site. The management of Ashfield Flats is assisted by the Bassendean Preservation Group which has planted hundreds of local flora. Entry to Ashfield Flats is from West Road at the Sandy Beach car park, or from the Hardy Road car park or from Ashfield Parade.

#### **District Public Open Space**

*Definition: servicing a 5km catchment area; significant interest to attract users from a wide range; and generally 15,000m<sup>2</sup> to 40,000m<sup>2</sup> in size.*

Ashfield Reserve is classified as District Public Open Space.

#### **Local Public Open Space**

*Definition: servicing a 1km catchment area (i.e. a 500m walk to); responsive to local needs; and generally up to 3,000m<sup>2</sup> in size.*

There are two sub-categories of Local POS, namely: Developed Local POS and Undeveloped Local POS. Undeveloped POS may include small parcels of bushland, POS used in transition such as road or drainage reserves, or POS in close proximity to other developed POS.

Ashfield has one local public open space site, the Gary Blanch Reserve, which is classified as Developed Local POS.

### Cyril Jackson Senior Campus

Cyrlil Jackson Senior Campus is located on Reid Street in Bassendean. The campus is situated adjacent to the Ashfield train station and close to bus services.

Cyril Jackson is described on their website as:

A senior school campus, catering for a wide-range of senior schooling studies. Our students range from 16 year olds working towards graduation to people in their 50's and 60's who are here just for interest. We pride ourselves on our adult ethos, our ability to accommodate difference, our flexibility and our commitment to innovation.

We have a flexible timetable structure that permits students to work part-time as well as study. We have a variety of subjects offered in Flexi Learning mode (correspondence and some on-line) and more people are

opting for this as it permits full-time work as well as study towards TAFE or University entrance.

We have the only government Intensive English Centre north of the river for students over 16: these are mainly migrants and refugees who add a very multicultural mix to the campus.

Source: <http://www.cyriljackson.com.au/profile.html>

### Cyril Jackson Physical Education and Community Recreational Centre

The Cyril Jackson Physical Education and Community Recreational Centre is a shared facility between the Department of Education and Training and the Town of Bassendean. It is a fully equipped gymnasium and recreation centre located at the end of Fisher Street Bassendean.

The main hall is a multipurpose sports hall catering for netball, basketball, volleyball, gymnastics, dance, badminton, indoor hockey and more.

### Ashfield Soccer Club

The Ashfield Soccer Club is located on Coulston Road in Ashfield.

### Ashfield Commercial Centre

The commercial centre in Ashfield is located on Coulston Road and includes an IGA supermarket, fast food shops, a photographer and deli.

## **Population**

In the 2006 Census (held on 8th August 2006), there were 1,167 persons usually resident in Ashfield: 52.4% were males and 47.6% were females. Of the total population in Ashfield, 7.3% were Indigenous persons.

<b>PERSON CHARACTERISTICS</b>	<b>Ashfield</b>	<b>% of total persons in Ashfield</b>	<b>Town of Bassendean</b>	<b>% of total persons in Town of Bassendean</b>	<b>Western Australia</b>	<b>% of total persons in Western Australia</b>
<b>Total persons (excluding overseas visitors)</b>	1,167	-	13,463	-	1,959,088	-
<b>Males</b>	612	52.4%	6,585	48.9%	976,122	49.8%
<b>Females</b>	555	47.6%	6,878	51.1%	982,966	50.2%
<b>Indigenous persons (comprises Aboriginal and Torres Strait Islander)</b>	85	7.3%	374	2.8%	58,711	3.0%

Table 1 – Person Characteristics (2006 Census)

### Age

In the 2006 Census, 17.1% of the population usually resident in Ashfield were children aged between 0-14 years, and 28.4% were persons aged 55 years and over. The median age of persons in Ashfield was 37 years.

<b>AGE</b>	<b>Ashfield</b>	<b>% of total persons in Ashfield</b>	<b>Town of Bassendean</b>	<b>% of total persons in Town of Bassendean</b>	<b>Western Australia</b>	<b>% of total persons in Western Australia</b>
<b>0-4 years</b>	64	5.5%	822	6.1%	124,812	6.4%
<b>5-14 years</b>	135	11.6%	1,585	11.8%	271,622	13.9%
<b>15-24 years</b>	139	11.9%	1,663	12.4%	276,012	14.1%
<b>25-54 years</b>	499	42.8%	5,912	43.9%	837,776	42.8%
<b>55-64 years</b>	122	10.5%	1,477	11.0%	213,308	10.9%
<b>65 years and over</b>	209	17.9%	2,004	14.9%	235,556	12.0%
<b>Median Age</b>	37	-	39	-	36	-

Table 2 – Age

### Australian Citizenship

In the 2006 Census, 85.0% of persons usually resident in Ashfield were Australian citizens, 26.1% were born overseas and 0.9% were overseas visitors.

<b>AUSTRALIAN CITIZENSHIP</b>	<b>Ashfield</b>	<b>% of total persons in Ashfield</b>	<b>Town of Bassendean</b>	<b>% of total persons in Town of Bassendean</b>	<b>Western Australia</b>	<b>% of total persons in Western Australia</b>
<b>Australian Citizenship</b>	992	85.0%	11,777	87.5%	1,634,903	83.5%
<b>Persons Born Overseas</b>	305	26.1%	3,699	27.5%	531,746	27.1%
<b>Overseas Visitors (excluded from all other classifications)</b>	10	0.9%	88	0.7%	21,266	1.1%

Table 3 – Australian Citizenship



### Country of Birth

In the 2006 Census, the majority of residents (66%, 769) were born in Australia and 10% (122) were born in the United Kingdom.

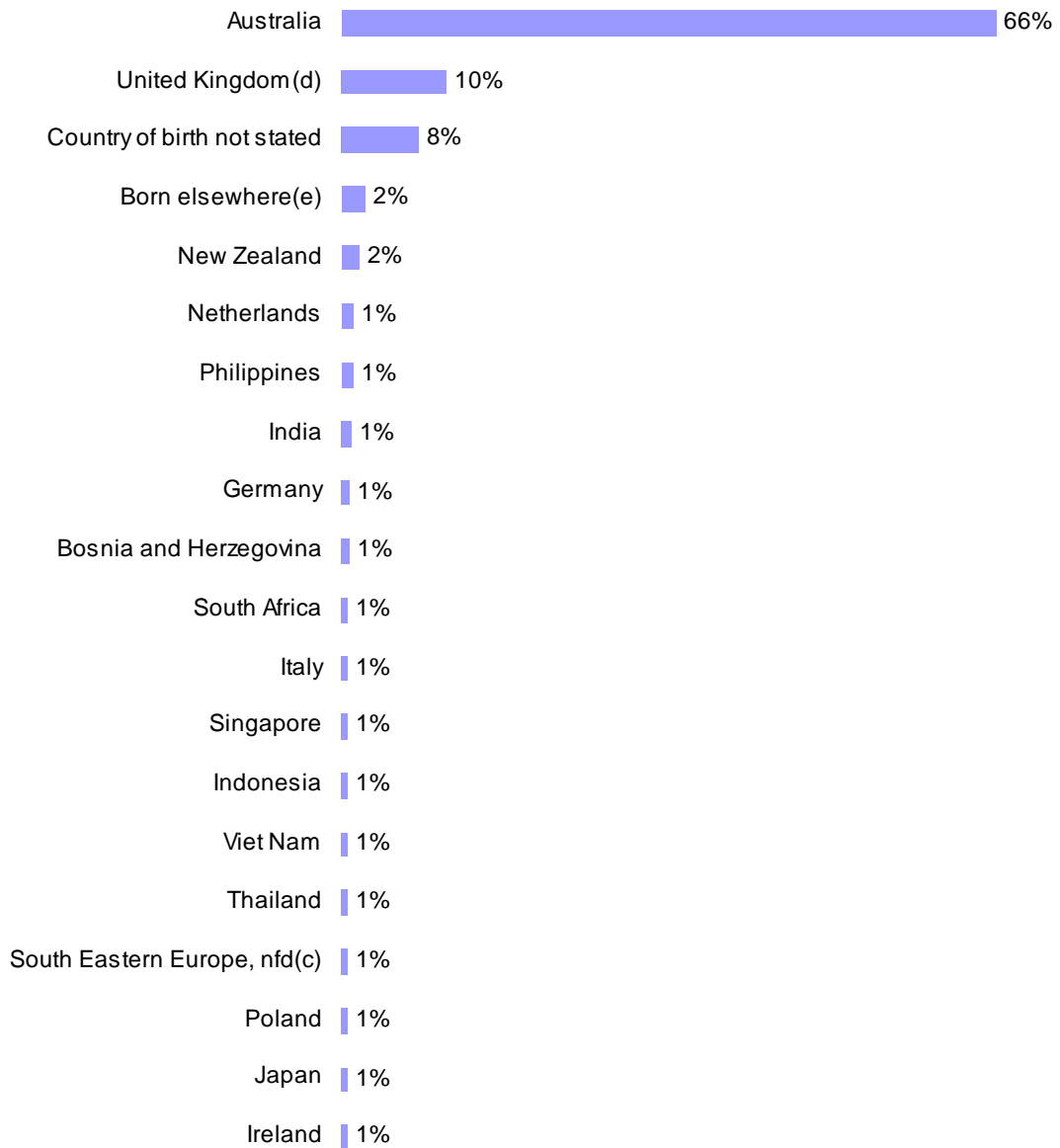


Figure 5 – Ashfield Residents' Country of Birth

### Language Spoken At Home

In the 2006 Census, English was stated as the only language spoken at home by 80.8% of persons usually resident in Ashfield. The most common languages other than English spoken at home were: Serbian 1.2%, Japanese 0.9%, Vietnamese 0.9%, Italian 0.9% and Bosnian 0.9%.

<b>LANGUAGE SPOKEN AT HOME</b>	<b>Ashfield</b>	<b>% of total persons in Ashfield</b>	<b>Town of Bassendean</b>	<b>% of total persons in Town of Bassendean</b>	<b>Western Australia</b>	<b>% of total persons in Western Australia</b>
<b>English only spoken at home</b>	943	80.8%	11,289	83.9%	1,603,038	81.8%
<b>Serbian</b>	14	1.2%	76	0.6%	-	-
<b>Japanese</b>	11	0.9%	-	-	-	-
<b>Vietnamese</b>	11	0.9%	128	1.0%	13,242	0.7%
<b>Italian</b>	11	0.9%	288	2.1%	32,895	1.7%
<b>Bosnian</b>	10	0.9%	-	-	-	-

Table 4 – Languages Spoken at Home

### Religious Affiliation

In the 2006 Census, the most common responses for religious affiliation for persons usually resident in Ashfield were No Religion 25.1%, Catholic 22.2%, Anglican 19.9%, Eastern Orthodox 3.0% and Uniting Church 2.7%.

<b>RELIGIOUS AFFILIATION</b>	<b>Ashfield</b>	<b>% of total persons in Ashfield</b>	<b>Town of Bassendean</b>	<b>% of total persons in Town of Bassendean</b>	<b>Western Australia</b>	<b>% of total persons in Western Australia</b>
<b>No Religion</b>	293	25.1%	3,324	24.7%	448,436	22.9%
<b>Catholic</b>	259	22.2%	3,721	27.6%	464,004	23.7%
<b>Anglican</b>	232	19.9%	2,447	18.2%	400,481	20.4%
<b>Eastern Orthodox</b>	35	3.0%	-	-	-	-
<b>Uniting Church</b>	32	2.7%	358	2.7%	74,332	3.8%

Table 5 – Religious Affiliation

### Marital Status

In the 2006 Census, 41.6% of persons aged 15 years and over usually resident in Ashfield were married, 38.3% never married, 14.7% separated or divorced and 6.0% widowed.

<b>MARTIAL STATUS</b>	<b>Ashfield</b>	<b>% of total persons in Ashfield</b>	<b>Town of Bassendean</b>	<b>% of total persons in Town of Bassendean</b>	<b>Western Australia</b>	<b>% of total persons in Western Australia</b>
<b>Married</b>	403	41.6%	4,857	43.9%	774,028	49.5%
<b>Never Married</b>	371	38.3%	3,828	34.6%	526,894	33.7%
<b>Separated or Divorced</b>	142	14.7%	1,630	14.7%	181,771	11.6%
<b>Widowed</b>	58	6.0%	742	6.7%	79,960	5.1%

Table 6 – Marital Status

### Labour Force (Population aged 15 years and over)

During the week prior to the 2006 Census, 527 people aged 15 years and over who were usually resident in Ashfield were in the labour force. Of these, 63.2% were employed full-time, 26.0% were employed part-time, 3.2% were employed but away from work, 3.8% were employed but did not state their hours worked and 3.8% were unemployed. There were 364 usual residents aged 15 years and over not in the labour force.

<b>LABOUR FORCE (POPULATION AGED 15 YEARS AND OVER)</b>	<b>Ashfield</b>	<b>% of total persons in Ashfield</b>	<b>Town of Bassendean</b>	<b>% of total persons in Town of Bassendean</b>	<b>Western Australia</b>	<b>% of total persons in Western Australia</b>
<b>Total labour force (includes employed and unemployed persons)</b>	527	-	6,830	-	972,791	-
<b>Employed full-time</b>	333	63.2	4,257	62.3%	593,673	61.0%
<b>Employed part-time</b>	137	26.0%	1,889	27.7%	275,948	28.4%
<b>Employed away from work</b>	17	3.2	261	3.8%	40,002	4.1%
<b>Employed hours not stated</b>	20	3.8	175	2.6%	26,506	2.7%
<b>Unemployed</b>	20	3.8	248	3.6%	36,662	3.8%
<b>Not in labour force</b>	364	-	3,533	-	478,244	-

Table 7 – Labour Force (Population Aged 15 Years and Over)

Occupation (Employed persons 15 years and over)

In the 2006 Census, the most common responses for occupation for employed persons usually resident in Ashfield were Technicians and Trades Workers 19.9%, Professionals 16.4%, Clerical and Administrative Workers 15.0%, Labourers 13.0% and Community and Personal Service Workers 10.8%.

<b>OCCUPATION (EMPLOYED PERSONS 15 YEARS AND OVER)</b>	<b>Ashfield</b>	<b>% of total persons in Ashfield</b>	<b>Town of Bassendean</b>	<b>% of total persons in Town of Bassendean</b>	<b>Western Australia</b>	<b>% of total persons in Western Australia</b>
<b>Technicians and Trades Workers</b>	101	19.9%	1,147	17.4%	153,566	16.4%
<b>Professionals</b>	83	16.4%	1,218	18.5%	173,956	18.6%
<b>Clerical and Administrative Workers</b>	76	15.0%	1,035	15.7%	135,980	14.5%
<b>Labourers</b>	66	13.0%	711	10.8%	102,021	10.9%
<b>Community and Personal Service Workers</b>	55	10.8%	720	10.9%	82,915	8.9%
<b>Sales Workers</b>	39	7.7%	610	9.3%	88,083	9.4%
<b>Machinery Operators And Drivers</b>	35	6.9%	427	6.5%	67,895	7.3%
<b>Managers</b>	33	6.5%	595	9.0%	117,030	12.5%

Table 8 – Occupation (Employed Persons 15 Years and Over)

Income (Population aged 15 years and over)

In Ashfield, the median weekly individual income for persons aged 15 years and over who were usual residents was \$456. The median weekly household income was \$857. The median weekly family income was \$1,053.

<b>INCOME (Population aged 15 years and over)</b>	<b>Ashfield</b>	<b>% of total persons in Ashfield</b>	<b>Town of Bassendean</b>	<b>% of total persons in Town of Bassendean</b>	<b>Western Australia</b>	<b>% of total persons in Western Australia</b>
<b>Median individual income (\$/weekly)</b>	\$456	-	\$487	-	\$500	-
<b>Median household income (\$/weekly)</b>	\$857	-	\$950	-	\$1,066	-
<b>Median individual family (\$/weekly)</b>	\$1,053	-	\$1,161	-	\$1,246	-

Table 9 – Income (Population Aged 15 Years and Over)

### Family Characteristics

In the 2006 Census, there were 314 families in Ashfield: 29.6% were couple families with children, 48.4% were couple families without children, 19.7% were one parent families and 2.2% were other families.

<b>FAMILY CHARACTERISTICS</b>	<b>Ashfield</b>	<b>% of total persons in Ashfield</b>	<b>Town of Bassendean</b>	<b>% of total persons in Town of Bassendean</b>	<b>Western Australia</b>	<b>% of total persons in Western Australia</b>
<b>Total families</b>	314	-	3,658	-	511,917	-
<b>Couple families with children</b>	93	29.6%	1,416	38.7%	230,740	45.1%
<b>Couple families without children</b>	152	48.4%	1,442	39.4%	196,311	38.3%
<b>One parent families</b>	62	19.7%	729	19.9%	76,001	14.8%
<b>Other families</b>	7	2.2%	71	1.9%	8,865	1.7%

Table 10 – Family Characteristics

### Dwelling Characteristics

In the 2006 Census, there were 503 occupied private dwellings counted in Ashfield: 94% were separate houses, 3% were semi-detached, row or terrace houses, townhouses etc, and 2% were flats, units or apartments.

<b>DWELLING CHARACTERISTICS - PRIVATE DWELLINGS (Includes Visitor only and other not classifiable households)</b>	<b>Ashfield</b>	<b>% of total persons in Ashfield</b>	<b>Town of Bassendean</b>	<b>% of total persons in Town of Bassendean</b>	<b>Western Australia</b>	<b>% of total persons in Western Australia</b>
<b>Total private dwellings (includes unoccupied private dwellings)</b>	548	-	6,089	-	849,006	-
<b>Occupied private dwellings:</b>	503	-	5,634	-	757,989	-
<b>Separate house</b>	475	94.4%	4,470	79.3%	599,069	79.0%
<b>Semi-detached, row or terrace house, townhouse etc</b>	17	3.4%	849	15.1%	79,311	10.5%
<b>Flat, unit or apartment</b>	11	2.2%	305	5.4%	61,246	8.1%
<b>Other dwellings</b>	0	0.0%	7	0.1%	17,913	2.4%
<b>Not stated</b>	0	0.0%	3	0.1%	450	0.1%

Table 11 – Dwelling Characteristics – Private Dwellings

### Tenure Type

The majority of dwellings are being purchased (29%, 142) or fully owned (25%, 119).

<b>TENURE TYPE - OCCUPIED PRIVATE DWELLINGS</b>	<b>Ashfield</b>	<b>% of total persons in Ashfield</b>	<b>Town of Bassendean</b>	<b>% of total persons in Town of Bassendean</b>	<b>Western Australia</b>	<b>% of total persons in Western Australia</b>
<b>Fully owned</b>	120	23.9%	1,764	31.3%	228,547	30.2%
<b>Being purchased (includes being purchased under rent/buy scheme)</b>	142	28.2%	2,013	35.7%	266,111	35.1%
<b>Rented (includes rent-free)</b>	202	40.2%	1,457	25.9%	196,980	26.0%
<b>Other tenure type</b>	3	0.6%	59	1.0%	7,725	1.0%
<b>Not stated</b>	35	7.0%	340	6.0%	58,624	7.7%

Table 12 – Tenure Type – Occupied Private Dwellings

### Landlord Type

A total of 201 dwellings are being rented: State or territory housing authority (20%, 95), real estate agent (13%, 61), person not in same household(c) (8%, 40) and landlord type not stated (1%, 5).

<b>LANDLORD TYPE - OCCUPIED PRIVATE DWELLINGS BEING RENTED (including rent free accommodation)</b>	<b>Ashfield</b>	<b>% of total persons in Ashfield</b>	<b>Town of Bassendean</b>	<b>% of total persons in Town of Bassendean</b>	<b>Western Australia</b>	<b>% of total persons in Western Australia</b>
<b>Real estate agent</b>	60	29.7%	545	37.4%	79,976	40.6%
<b>State or Territory housing authority</b>	98	48.5%	334	22.9%	28,900	14.7%
<b>Other landlord type</b>	46	22.8%	545	37.4%	81,683	41.5%
<b>Landlord type not stated</b>	4	2.0%	33	2.3%	6,421	3.3%

Table 13 – Landlord Type – Occupies Private Dwellings Being Rented

### Type of Educational Institution Attending

A total of 313 persons stated that they were attending an educational institution. Of these, the largest proportion (36%, 116) did not state what type of educational institution they were attending. 27% (86) persons are attending infants / primary school. 15% (46) are attending secondary school and 5% (12) are attending technical or further educational institution.

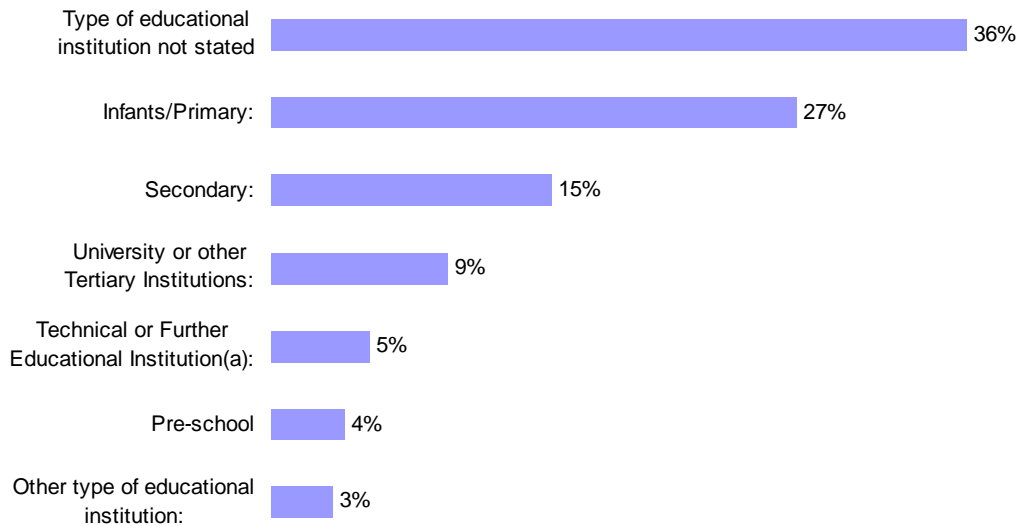


Figure 6 – Educational Institution Attended by Ashfield Residents

### Need for Assistance

74 people stated that they have a need for assistance. Of these, 29 people are over the age of 65 years and 20 people are between the ages of 35 and 44 years. The following graph illustrates the age groups of the people that indicated that they need assistance.

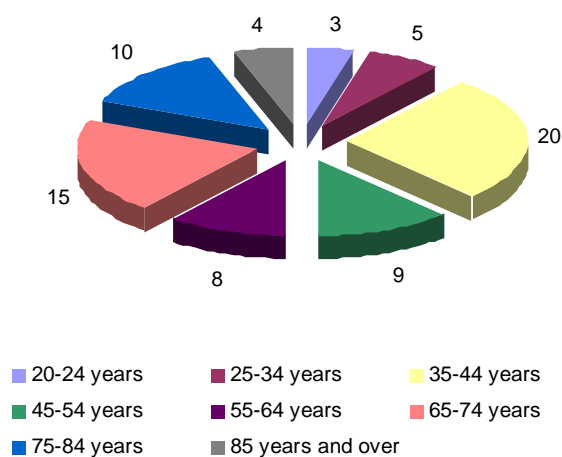


Figure 7 – Need for Assistance by Ashfield Residents (2006 Census)

### Volunteering

131 persons indicated that they were a volunteer at the time of the 2006 Census. Of these, the largest proportion of volunteers (31) are between the ages of 55-64. A large proportion of 65 to 74 year olds (25 volunteers) and 35 to 44 year olds (24 volunteers) also volunteer. The following graph illustrates the age groups of the Ashfield residents who volunteer.

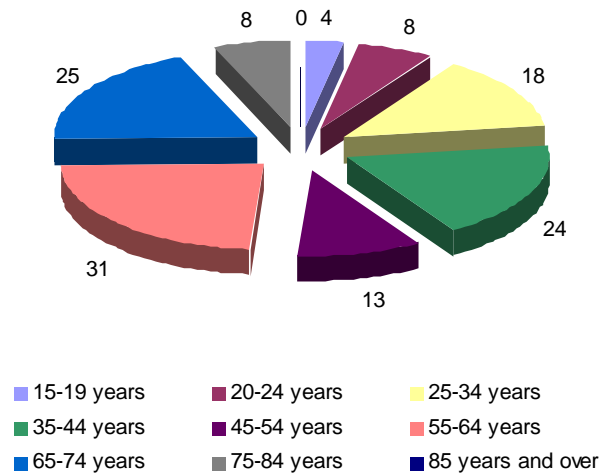


Figure 8 – Ashfield Residents Who Volunteer (2006 Census)

### Number of Cars per Dwelling

The majority of dwellings have one motor vehicle (37%, 179) or two motor vehicles (30%, 147). 16% (79) do not have any motor vehicles, 9% (43) have three and the smallest proportion have four or more (4%, 16). 4% (20) of people did not state the number of motor vehicles.

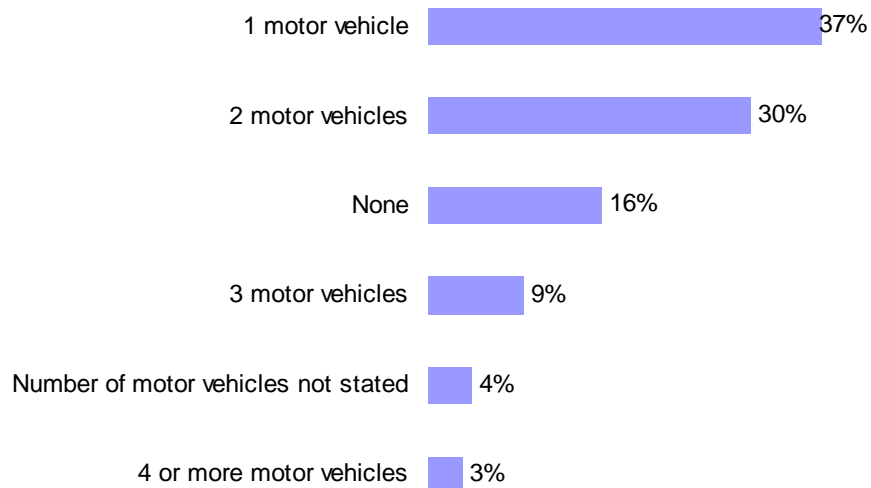


Figure 9 – Number of Cars per Dwellings in Ashfield (2006 Census)



### Type of Internet Connection

51% (245) of dwellings do have internet connection (Broadband or Dial-up) and 45% (219) of households do not have internet connection. 4% (19) of dwellings did not state their internet connection.

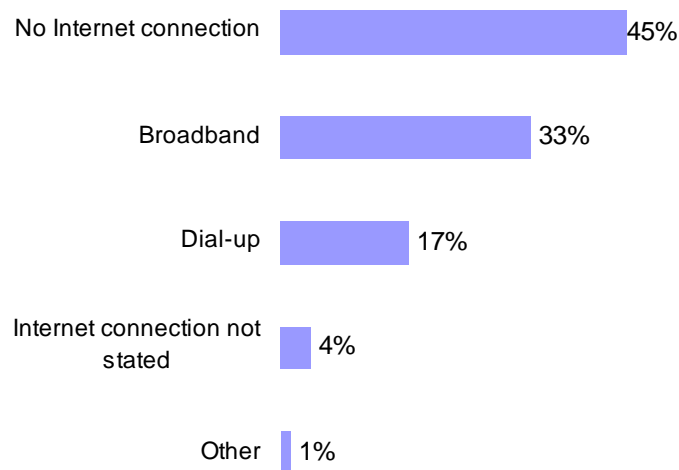


Figure 10 – Type of Internet Connection in Ashfield (2006 Census)

### **Crime Statistics**

The crime data below has been derived from the Australian Police's reported offences database. The graph outlines the number of reported offences for 2005, 2006 and 2007. Data is analysed based on where the offence occurred and when it is reported to the police. The police statistics are not a reflection on the number of successful prosecutions.

The number of reported offences has increased consistently for Assault. There were an additional 12 offences reported in 2007 compared with 2006. The number of Burglary (dwelling) offences reported in 2005 and 2006 jumped in 2007 with an increase of 19 and 20 offences respectively. The rate of Burglary (other) in 2007 was lower than in 2005 but higher than 2006. Graffiti was less in 2007 than 2005 with three less offences and 2006 with five less offences. Robbery increased in 2006 and 2007 with nine offences reported in each year compared with 3 offences reported in 2005. Finally, Stealing Motor Vehicle has increased from 2005 to 2006 and again in 2007. There were an additional three offences reported in 2006 and a further two incidences reported in 2007.

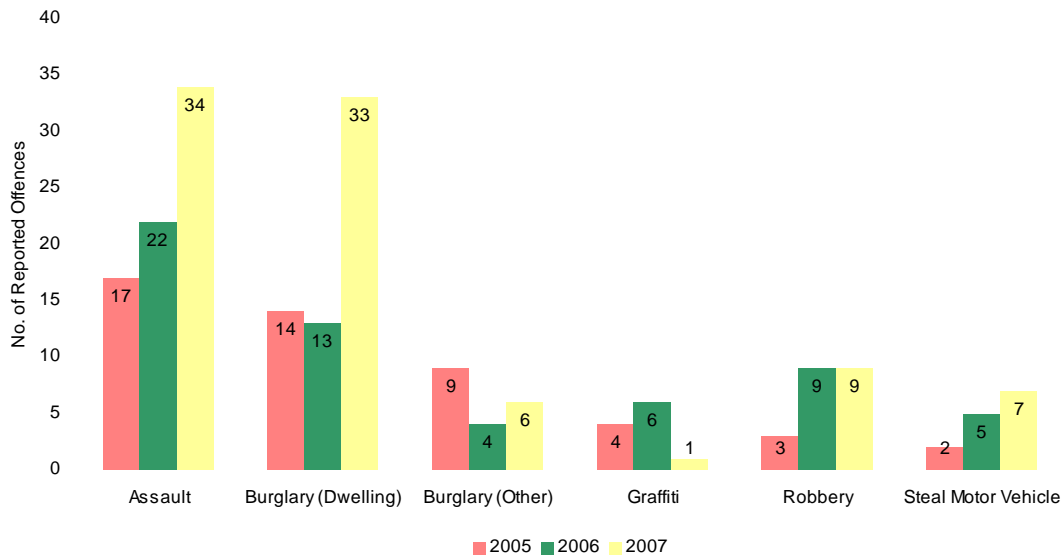


Figure 11 – Ashfield Crime Statistics 2005 - 2007

### OFFENCE DESCRIPTIONS

The following offence groups are those most commonly requested by the public. You can choose one of these groups in your search criteria below. See [Offence Descriptions](#) for more information.

#### Assault

This group is made up of the offences non-aggravated sexual assault, aggravated sexual assault, non-aggravated assault, and aggravated assault.

#### Burglary (dwelling)

To enter or attempt to enter any building, structure, tent, vehicle or vessel that is ordinarily used for human habitation without consent, with intent to commit an offence such as to steal property.

#### Burglary (non-dwelling)

To enter or attempt to enter a building, structure, tent, or conveyance other than a dwelling without the owner's consent, with intent to commit an offence such as to steal property.

#### Steal Motor Vehicle

Unlawfully using a motor vehicle without the consent of the owner or the person in charge of that motor vehicle.

#### Robbery

This group is made up of the offences non-aggravated robbery, aggravated robbery (firearm) and aggravated robbery (other).

#### Graffiti

Property damage caused by the application of substances to the surface of the property.

**Source:** Australian Police Website -

<http://www.police.wa.gov.au/ABOUTUS/Statistics/SearchCrimeStatistics/tabid/998/Default.aspx>

# APPENDIX D

## Community Workshop Outcomes Report

September 2008

The community workshop was attended by 34 people who were asked to work in groups and to answer three questions:

1. What do you like about living in Ashfield?
2. What would you like to improve in Ashfield? And
3. How could these improvements be achieved?

### **Question 1: What do you like about living in Ashfield?**

The table below shows participants' comments grouped by common themes, the number of times that these comments were mentioned and the percentage that this number represents out of the total number of comments received. The most popular response for liking Ashfield, with 26% of the responses, was location, location, location. Resident's described Ashfield as a central location, close to everything including the city, the river, public transport, shopping, other town centres and many other places. Nature, trees and public open space were also mentioned by 15% of participants as a reason for liking Ashfield.

<b>What Participants Liked about Living in Ashfield</b>	<b>Number of Times Mentioned</b>	<b>Percentage from Total</b>
Location - central and close to lots of things such as river, city, transport, shopping, airport, main street, industrial area, highway, sports facilities, other main centres such as Bassendean, Bayswater, Midland	18	26%
Nature, trees, public open space and Ashfield Flats	10	15%
Community and Neighbours - made up of diverse, long term, quiet and friendly residents	7	10%
Large blocks, low density with not many units	6	9%
Proximity to the river	4	6%
Cycling and walking paths	4	6%
Character and lifestyle - small suburb, safe and unpretentious	4	6%
Parks and recreation opportunities for Children	3	4%
Beautiful place	3	4%
Birdlife	2	3%
Transport – rail and cycle paths	2	3%
A suburb with potential	1	1%
Sporting facilities	1	1%
Shops in the area	1	1%
No main highway through the middle	1	1%
Not on worst section of the flight path for planes arriving and departing Perth airport	1	1%
<b>Total</b>	<b>68</b>	<b>100%</b>

## Question 2: What would you like to improve in Ashfield?

It was difficult for participants to separate what they would like to improve in Ashfield and how these improvements could be achieved. Therefore participants' answers to this question already contains suggestions for implementing these changes.

Participants had a discussion at their tables about what they would like to improve in Ashfield. These improvements were presented back to all participants and were grouped together into overall themes. Participants were then given five votes to identify the most needed improvements. The suggested improvements together with the number of votes that they received are presented in order of popularity in the table below.

Suggested Improvements	Number of Votes
Reduce crime/ increase safety in places like parks, train station and shops	21
HomesWest reduction to standard	20
Improve commercial centre (e.g. variety of shops, safety)	18
Upgrade the train station ( more park and ride, looks, toilets, safety and overpass for pedestrians)	15
Control traffic (e.g. speed and hoons)	6
Beautify street scapes (e.g. remove rubbish bins, tree selection to reduce amount of leaves, increase street art, remove car wrecks, and special attention paid near the railway)	5
Underground power	5
Better communication with the community (e.g. internet, webpage for Ashfield)	4
Amalgamate with Bassendean	4
Improve access from Ashfield to Bayswater boat ramp	3
Improve the sense of community (e.g. change the name, pride)	3
Change the floor in the playground	2
Beautification of verges	2
Maintain infrastructure (e.g. oval)	2
Clean and maintain public areas (e.g. Ashfield Reserve)	2
Reduce the amount of industrial area	1
Safer pedestrian access (e.g. footpaths and ramps)	0
Solar lighting at parks and near the river	0
Better allocation of funding	0
Broaden the recreational opportunities for the community (e.g. sports for women)	0
Improve access to the river	0
Preserve the environment (e.g. no South Perth style of river front)	0

### **Question 3: How could these improvements be achieved?**

Participants' suggested actions for improving Ashfield been listed under the key themes presented below.

#### Community Activities

- Street parties to celebrate the community
- More Ashfield community activities
- Create a community garden from which produce can be sold locally
- Create a walking group in Ashfield

#### Education

- Educate the community to be waterwise
- Local toy library and play group held at a community centre once a week
- Improve understanding of why parents feel that they are reluctant to send children to Ashfield Primary School
- Implement appropriate actions to make the school a hub for the community and so that we can send kids to the school in Ashfield
- Control bullying of children in and out of the school

#### Community Engagement and Communication

- Create a strong action/focus group for the community to become active and vocal
- More residents to join in community groups such as the Ashfield Stakeholders Group
- Make the Ashfield Stakeholder Advisory group more visible and publicise it
- Council to keep communication open with neighbours
- Create a neighbourhood/community message/notice board
- Ashfield community secure website/internet hub (only community can log in) and bulletin board (those who don't have a computer could drop off complaints and suggestions in a box at IGA) or other central location that is frequently visited
- Update the community about action group meetings
- Update the community about government and other works in the area

- Government and Planning
- Lobby the local government member more strongly
- Develop clear and realistic goals that are well planned and supported
- Government to choose the best not the cheapest solutions
- Encourage a proactive and forward thinking council
- Better allocation of funding; too much spending on a single project

### Health

- Encourage community services to locate in the area
- Encourage a doctor to practice in the area
- Create a community infant health clinic

### Safety

- Possible re-introduction of neighbourhood watch
- Improve the security at the Coulston Street shopping area (this could be done by installing a CCTV near the ATM)
- Community to report antisocial behaviour and issues with street cleanliness to police and council
- Rangers to look at the whole picture instead of just dogs or cars parked outside the marked lanes
- Better lighting around shopping centres and parks

### Maintenance

- Cleaning up of public areas (e.g. parks)
- Residents to keep their own verge clean
- "Busy-bees" for clean up/ litter pickup and for beautifying street verges i.e. cleaning up street blocks by neighbours helping each other
- Create a volunteer clean-up group
- Re use mulch locally (free) to residents from green waste collection ie. Put it on verge on the day that collection takes place
- More bins in public spaces and regular emptying of these by council/Cleanaway (especially after events and weekends)

### Street Improvement

- Improve/beautify street scape
- More green and trees
- Introduce street art
- Improve the look of the railway line through Ashfield
- Improve the appearance of Moojeebing Street
- The improvements on Ashfield Parade are taking too long, the contractor needs to be managed better
- Wider and safer pedestrian access
- Underground power lines

### Housing

- Reduce the percentage of social housing
- Better monitoring and inspection of social housing
- Change the type of Homes West tenants to those who care about their homes and neighbours, and who are friendly and respectful to children and older residents
- Approve/motivate housing that is not so generic. All new housing seems to suffer from poor quality building
- Increase the density near the shopping and train station areas only i.e. mixed residential and commercial
- Maintain a sense of community if there is development and increased density
- Retain quality of lifestyle (natural beauty)
- No densification throughout the suburb
- No high rise developments in Ashfield

### Industrial Area

- Reduce amount of industrial area

### Commercial

- Improve the diversity of commercial offerings at Coulston Street shopping area (e.g. better small shops, newsagency, chemist, hair dresser, post office, cafes, locally owned shops, local produce, market place style)
- Allow a café at Ashfield flats
- Redevelop the commercial area to make it more attractive and safer



### Recreation

- Better access to the river
- Better play equipment at playgrounds (e.g. install rubber mats)
- The path along the river needs a boardwalk for various reasons, like flooding and damage to the ground path caused by bikes and dog walking
- Expand the recreational centre
- Install gas barbeques that are vandal proof
- More benches around the river

### Image and Identity

- A name change. The name of Ashfield is synonymous with anti-social connotations. Consider returning to the original name of Watley
- Create a commercial and spiritual centre for Ashfield
- Ashfield is lost in between Bassendean and Bayswater and lacks a champion. Amalgamating with one of these other suburbs may be an option
- Create a meeting place for the community
- Create a sense of achievement for the community
- Increase HomesWest residents' pride in Ashfield
- Preserve natural features and the Ashfield Flats
- Increase sense of community

### Awards

- Incentive awards for things like tidiest street, most improved street, awards to schools, etc. Prizes could be donated by local businesses and council

### Transport and Traffic

- Improve railway station (lifts, security, guards, facilities)
- Create a park and ride facility at Ashfield Train Station
- Improve bus services
- Slow traffic
- No commercial vehicles parking on weekends

# APPENDIX E

## Focus Group Discussions Outcomes Report

September 2008

Seven focus group discussions were conducted in September 2008 to explore:

1. What is working in Ashfield?
2. What do you think needs to change in Ashfield?
3. Strategies for making Ashfield a better place to live

**Question 1: What is working in Ashfield?**

- Diversity of residents – multicultural and diverse
- Strategically located – close to river and CBD
- Accessible to rail, east-west and north-south routes
- Has a rural feel
- High property value
- Opportunity to capitalise on development
- Five primary schools in the area
- Cyril Jackson Recreation Centre
- Industrial and residential in same area

**Question 2 and 3: What do you think needs to change in Ashfield to make it a better place to live and what are your suggestions for making these changes?**

A detailed outline of the proposed changes to Ashfield, recommendations for making these changes and the focus groups in which they were mentioned are outlined in the table below.

<b>*Focus Group Colour Code</b>	
	Safety, business, transport and planning
	Parents, children, Culturally and Linguistically Diverse (CALD), education
	Youth
	Town of Bassendean elected members
	Seniors, people with disabilities, recreation and health
	Indigenous

COMMUNITY PRIDE AND PARTICIPATION		Focus Group*				
Things that need to change	Suggestions for making Ashfield a better place to live					
Change negative perception of Ashfield	<ul style="list-style-type: none"> <li>Increase ratio of owner / occupier.</li> <li>Create new state housing and sell old stock.</li> </ul>					
Prevent feuding families from living in Ashfield	<ul style="list-style-type: none"> <li>Homewest to develop a process for carefully checking the tenants when allocating homes in the same area to prevent feuding families living together.</li> </ul>					
Connect more with local indigenous community and other ethnic groups	<ul style="list-style-type: none"> <li>Continue to support NAIDOC week.</li> <li>Raise awareness and celebrate cultural diversity in the community.</li> </ul>					
Connect young people from different cultural groups and indigenous	<ul style="list-style-type: none"> <li>Create sports activities as a way of connecting young people from different cultural backgrounds.</li> <li>Educate young people about different cultures.</li> <li>Provide computer services for Aboriginal kids.</li> <li>Find an Aboriginal facilitator to link with indigenous youth.</li> <li>Provide sporting facilities for young indigenous people.</li> </ul>					
Create optimism in Ashfield	<ul style="list-style-type: none"> <li>Implement changes that can take effect in the short term.</li> </ul>					
Attract families into the area	<ul style="list-style-type: none"> <li>Provide additional educational facilities in Ashfield. Explore the opportunity and feasibility of creating an education centre (whole of learning institution) in Ashfield that offers kindergarten, primary, high school and higher education (such as TAFE and University).</li> </ul>					
Ashfield needs a heart / core	<ul style="list-style-type: none"> <li>Create a gathering space where people can get together and feel safe. This should be in a central location (for example, at the shops).</li> <li>Build a heart for Ashfield that embraces and reflects the cultural diversity in the community.</li> </ul>					
Promote and celebrate the artists that live in Ashfield.	<ul style="list-style-type: none"> <li>Provide art classes for everyone including young people and the elderly and people from different cultural backgrounds.</li> </ul>					
Improve the look and feel of Ashfield	<ul style="list-style-type: none"> <li>Raise the profile of the Town of Bassendean's council building that is located in Ashfield and use the building as an entry statement.</li> </ul>					

COMMUNITY PRIDE AND PARTICIPATION		Focus Group*				
Things that need to change	Suggestions for making Ashfield a better place to live					
	<ul style="list-style-type: none"> <li>• Support the continuation of the Streetscapes Project and Public Art Masterplan.</li> <li>• Improve legibility of the area (for example by using signage).</li> <li>• Install public art throughout the area and consider including Aboriginal themes.</li> <li>• Ashfield Parade needs a community meeting place.</li> <li>• Initiate a strategy to improve POS in the area including the provision of facilities that are needed.</li> </ul>					
Recognise Aboriginal people's lives and history	<ul style="list-style-type: none"> <li>• Invite a 'Welcome to Country' at local events.</li> <li>• Install interpretive signs throughout the area recognising Aboriginal people's lives, history and importance.</li> </ul>					
Increase self-esteem and pride in being Aboriginal.	<ul style="list-style-type: none"> <li>• Improve the standard of indigenous accommodation.</li> </ul>					

HOUSING AND THE PHYSICAL ENVIRONMENT		Stakeholder Group				
Things that need to change	Suggestions for making Ashfield a better place to live					
Attract better rental tenants	<ul style="list-style-type: none"> <li>Improve condition of rental properties by implementing a renewal program.</li> </ul>					
Attract development in the area	<ul style="list-style-type: none"> <li>Rezone area to allow for more development.</li> <li>Encourage redevelopment of existing areas by providing incentives.</li> <li>Ensure that there is a balance of commercial and residential development.</li> <li>Create a village feel with a mixed use centre.</li> <li>Use the land behind Cyril Jackson for community purposes.</li> </ul>					
Improve Ashfield train station	<ul style="list-style-type: none"> <li>Give the Ashfield train station a facelift. Redevelop Ashfield train station to a standard as good as or better than Bassendean or Bayswater stations.</li> <li>Improve the feeling of safety at the Ashfield training station. Improve lighting at the train station.</li> <li>Construct a car park at Ashfield train station.</li> <li>Improve accessibility at the station. It is currently very difficult for seniors or people with prams or disabilities to access the station.</li> </ul>					
Improve lighting in the area especially at the soccer club	<ul style="list-style-type: none"> <li>Improve lighting at the soccer club especially throughout the oval however make sure that lighting does not have the opposite effect by attracting people to the soccer club.</li> <li>Improve lighting along streetpaths to increase visibility and feelings of safety (especially for students and women walking from Cyril Jackson to the train station and vice versa).</li> <li>Improve lighting around the ATM at the shops as it is an unsafe area.</li> <li>Report incidences of lighting malfunctions to council and western power.</li> </ul>					
Rehabilitate the river foreshore area	<ul style="list-style-type: none"> <li>Support the river foreshore redevelopment plans currently being implemented by the Town of Bassendean. The redevelopment plans include fishing platforms and Kayak ramps. (Currently spending \$1.3 million in redeveloping the river foreshore in Ashfield. It is a three year plan, currently in its second year of the program.)</li> </ul>					
Improve streetscapes in the area	<ul style="list-style-type: none"> <li>Develop a streetscapes improvement plan including improved tree stock in the area.</li> </ul>					

HOUSING AND THE PHYSICAL ENVIRONMENT		Stakeholder Group				
Things that need to change	Suggestions for making Ashfield a better place to live					
Improve infrastructure in the area	<ul style="list-style-type: none"> <li>Western Power to upgrade its infrastructure by undergrounding the powerlines in the area.</li> </ul>					
Reduce proportion of Homeswest in the area	<ul style="list-style-type: none"> <li>Reduce homeswest stock by selling existing houses and use money to invest in other areas.</li> </ul>					
Improve flow of students leaving trains and walking to school	<ul style="list-style-type: none"> <li>Install a Smartrider machine at the train station.</li> </ul>					
Improve commercial precinct	<ul style="list-style-type: none"> <li>Redevelop commercial area and provide a diversity of commercial options, such as: <ul style="list-style-type: none"> <li>An internet café that is accessible to everyone</li> <li>Hairdressers</li> <li>Podiatry</li> <li>Café</li> <li>Health services</li> <li>Eateries and alfresco dining</li> <li>Shopfront library services</li> <li>Post Office</li> <li>Computer centre for kids to do their homework</li> <li>Mixed use development</li> </ul> </li> </ul>					
Integrate Ashfield with the surrounding areas	<ul style="list-style-type: none"> <li>Link Ashfield with existing facilities and services in the surrounding area and prevent duplication of existing services and facilities.</li> <li>Create a strong link between Ashfield and Bassendean.</li> </ul>					
Improve accessibility in the area	<ul style="list-style-type: none"> <li>Provide disabled parking in appropriate locations.</li> <li>Improve accessibility at train station.</li> <li>Move the station to line up with Coulston Street and underground or lower the station to make it easier to access.</li> </ul>					

HOUSING AND THE PHYSICAL ENVIRONMENT		Stakeholder Group				
Things that need to change	Suggestions for making Ashfield a better place to live					
	<ul style="list-style-type: none"> <li>• Improve road and pedestrian link between residential and industrial areas.</li> <li>• Improve footpaths in the area by making them wider to cater for prams and gophers.</li> <li>• Provide dedicated cycling paths throughout the area which connects to the Swan region and the city.</li> <li>• Improve timing of traffic lights to make it easier and more efficient for pedestrians to walk through the area.</li> </ul>					
Improve public transport	<ul style="list-style-type: none"> <li>• Provide additional and more regular bus transport options.</li> <li>• Provide alternative transport option such as good cycling paths with a good cycling network.</li> </ul>					
Improve Pearson Street Park	<ul style="list-style-type: none"> <li>• Redevelop the Pearson Street Park and include:</li> <li>• A community garden</li> <li>• Interactive water fountain</li> <li>• A good example is Faulkner Park in Belmont.</li> </ul>					



EMPLOYMENT, LEARNING OPPORTUNITIES AND LOCAL ECONOMIES		Stakeholder Group				
Things that need to change	Suggestions for making Ashfield a better place to live					
Ensure that school kids are attending school / prevent truancy – attendance at school is currently 85% which is below the state average	<ul style="list-style-type: none"> <li>Report truancy to Department for Communities.</li> <li>Continue to support Aboriginal Education Officers.</li> </ul>					
Acknowledge and encourage contribution of Cyril Jackson students to local community and economy	<ul style="list-style-type: none"> <li>Have a recreation centre shared between Cyril Jackson and local residents. Open up recreation centre for full use by the local community.</li> <li>Offer community recreation programs.</li> <li>Encourage students and local residents to participate in recreation and community programs.</li> <li>Provide housing options for students who want to finish education but cannot live at home.</li> <li>Make use of student numbers to stimulate economic activity in the area by providing businesses especially along walking pathways.</li> </ul>					
Improve reputation of Ashfield Primary School	<ul style="list-style-type: none"> <li>Provide a greater choice in subjects to better cater for the needs of students.</li> <li>Reduce incidences of bullying at the school.</li> </ul>					
Attract tourism to the area	<ul style="list-style-type: none"> <li>Attract cycling tourists by providing a cycling centre with good services and facilities (especially servicing cyclists on the way to the Swan region and the city).</li> <li>Explore opportunities for eco tourism in the area.</li> </ul>					

PERSONAL SAFETY AND CRIME		Stakeholder Group				
Things that need to change	Suggestions for making Ashfield a better place to live					
Reduce graffiti, vandalism and littering	<ul style="list-style-type: none"> <li>• Initiate community based approaches to address vandalism and graffiti such as Eyes on the Street.</li> <li>• Provide youth with activities to keep them engaged.</li> <li>• Build rapport between police and local residents.</li> <li>• Respond to littering, graffiti, public drinking, quickly to prevent it from re-occurring.</li> <li>• Improve cleanliness of verge sides.</li> <li>• Provide more rubbish bins in the area.</li> <li>• Town of Bassendean could run a 'backyard blitz' competition or service on a regular basis.</li> <li>• Provide people with education about how to clean up and keep clean their front and back yards.</li> </ul>					
Improve perception of safety in Ashfield	<ul style="list-style-type: none"> <li>• Conduct a Crime Prevention Through Environmental Design (CPTED) audit of Ashfield to identify areas that may be hotspots and can be improved.</li> <li>• Conduct a more localised community safety and crime prevention plan to understand crime trends in Ashfield. Understand what people's perceptions and experiences of safety and crime are in the Ashfield area.</li> <li>• Raise awareness of lower crime rates in Ashfield and safety and crime prevention measures using a dedicated space in the community newspaper and Bassendean Briefings.</li> <li>• Create better links between community, Town of Bassendean and police to better understand crime and safety issues and coordinate action / justify resources.</li> <li>• Focus on making children feel safer.</li> <li>• Improve timeliness of reporting crime and responding to reports of crime by both the Town of Bassendean and the Police.</li> </ul>					
Ensure that new developments are a safe place to live	<ul style="list-style-type: none"> <li>• Ensure that all new developments incorporate CPTED principles.</li> </ul>					

PERSONAL SAFETY AND CRIME		Stakeholder Group
Things that need to change	Suggestions for making Ashfield a better place to live	
<p>Improve antisocial behaviour around soccer club playground / park and commercial centre / shops</p>	<ul style="list-style-type: none"> <li>• Monitor telephone boxes in front of shops as it is believed that they are being used to deal drugs.</li> <li>• Improve the look and feel of the IGA.</li> <li>• Support Nyoongar Patrol in Ashfield.</li> <li>• Support self determination plan created by the Cultural Advancement Group.</li> <li>• Ashfield Reserve should be a priority area in the Place Based Masterplan. The facilities need to be redeveloped, the toilets need upgrading and a BBQ should be installed.</li> <li>• Involve Aboriginals in the management of parks and reserves in the area.</li> </ul>	

HEALTH AND WELLBEING		Stakeholder Group			
Things that need to change	Suggestions for making Ashfield a better place to live				
Support young children and families	<ul style="list-style-type: none"> <li>• Provide out of school care programs.</li> <li>• Provide more children's services such as activities at library (Stories in the Park, Sculptures in the Park). Existing children services are in high demand.</li> <li>• Include an additional long term childcare centre in the area if Ashfield is redeveloped. Ensure that the centre is like the Organic Kids, Wind in the Willows, ABC style of facility.</li> <li>• Engage young indigenous mothers in existing programs and activities.</li> </ul>				
Increase utilisation of the river	<ul style="list-style-type: none"> <li>• Improve access to the river (EMRC is currently looking at river access).</li> <li>• Provide additional activities along the river and foreshore (such as canoe and boat hire). Primary school to support a joint venture for offering canoe activity at the river.</li> <li>• Provide cycling paths along the river foreshore.</li> <li>• Provide BBQ, seating and shelter at the river.</li> <li>• Provide passive recreation at the river which is family friendly.</li> <li>• Provide transport to the river.</li> </ul>				
Provide improved playgrounds in the area	<ul style="list-style-type: none"> <li>• Improve the playgrounds in the area.</li> </ul>				
Create a school canteen	<ul style="list-style-type: none"> <li>• Create school canteen at Ashfield Primary School.</li> </ul>				
Improve services for young people in Ashfield	<ul style="list-style-type: none"> <li>• Obtain more information about young people in Ashfield including a profile of young people and their needs.</li> <li>• Encourage young people to nominate for a WA Youth Award.</li> <li>• Use existing funding and grants provided by the Department for Communities such as: <ul style="list-style-type: none"> <li>• Small Grants Funding of up to \$5,000</li> <li>• Sponsorship program for youth events over a period of 12 months of up to \$35,000</li> </ul> </li> <li>• Provide activities for young people and ensure that it is free so that it is accessible to everyone. Activities could include:</li> </ul>				

HEALTH AND WELLBEING		Stakeholder Group			
Things that need to change	Suggestions for making Ashfield a better place to live				
	<ul style="list-style-type: none"> <li>○ Street festival with YMCA</li> <li>○ Skate competition</li> <li>○ 'Swan Kicking Goals' programs</li> <li>○ Salvation Army basketball courts</li> <li>○ Soccer competitions</li> <li>○ Art Classes</li> <li>○ Acting, Dancing and Singing Classes</li> <li>○ Blue light discos</li> <li>○ Story telling</li> </ul> <ul style="list-style-type: none"> <li>● Use modular equipment for skating (semi permanent) owned by the Town of Bassendean in the Ashfield Area. Need to be mindful that the equipment is a bit noisy, so avoid having it too close to residents.</li> <li>● Partner with the soccer club to extend the range of programs and services that could be offered to cater for the needs of young people and the general community.</li> <li>● Provide a recreation centre with indoor activities similar to Altone Park.</li> <li>● Provide an indigenous youth worker at the youth centre to encourage indigenous participation (currently a lack of indigenous youth using the youth centre).</li> <li>● Provide transportation for young people to participate in activities.</li> <li>● Provide school holiday activities for young people.</li> </ul>				
Educate young people about important issues	<ul style="list-style-type: none"> <li>● Use existing publications provided by the Department of Communities to educate young people about important issues (such as information about managing and avoiding debt and youth and alcohol).</li> </ul>				
Provide support to struggling individuals and families.	<ul style="list-style-type: none"> <li>● Use a case management approach to working with indigenous families to rationalise services provided and break problem cycles.</li> </ul>				

HEALTH AND WELLBEING		Stakeholder Group				
Things that need to change	Suggestions for making Ashfield a better place to live					
Create a health precinct within Ashfield	<ul style="list-style-type: none"> <li>Develop a multi purpose facility (wellness centre) at Ashfield that would service the region. Facilities and services could include:               <ul style="list-style-type: none"> <li>HAC Services</li> <li>Meeting rooms</li> <li>Performance space</li> <li>Art and cultural centre</li> <li>Programs for less able people</li> <li>Activities for different fitness levels</li> <li>Community of doctors (a good example is Altone Park).</li> </ul> </li> </ul>					
Provide support to indigenous mothers and families.	<ul style="list-style-type: none"> <li>Existing indigenous playgroup service should be offered on a more regular basis (greater than once a week).</li> <li>Other activities that could be offered to support indigenous mothers and families may include:               <ul style="list-style-type: none"> <li>Cooking classes (bush tucker)</li> <li>Parents and kids arts group</li> <li>Sport</li> <li>Grannies group</li> <li>Music (traditional and contemporary)</li> </ul> </li> </ul>					
Provide services for indigenous elders	<ul style="list-style-type: none"> <li>Provide trips for indigenous elders (for example, to the movies, to Fremantle, the Casino) and make them affordable.</li> </ul>					

<b>GOVERNMENT RESPONSIVENESS</b>		<b>Stakeholder Group</b>					
<b>Things that need to change</b>	<b>Suggestions for making Ashfield a better place to live</b>						
Invite Aboriginal representation on decision making groups	<ul style="list-style-type: none"> <li>• Involve Aboriginal people in the planning and management of community initiatives and strategies.</li> <li>• Invite Aboriginal representation on council committees.</li> <li>• Invite Aboriginal representation on the ACAN committee.</li> </ul>						
Improve access to government services	<ul style="list-style-type: none"> <li>• Provide access to government services in Ashfield.</li> </ul>						

# APPENDIX F

## Community Survey Outcomes Report

November 2008



## FIGURES

Figure 1 – Survey Respondents' Gender

Figure 2 – Survey Respondents' Age

Figure 3 – Survey Respondents' Cultural Background

Figure 4 – Survey Respondents' Most Important Topics for Improving Life in Ashfield

Figure 5 – Survey Respondents' willingness to help in implementing actions

Figure 6 – Survey Respondents' interest in staying informed

Figure 7 – Survey Respondents' Likes about Living in Ashfield

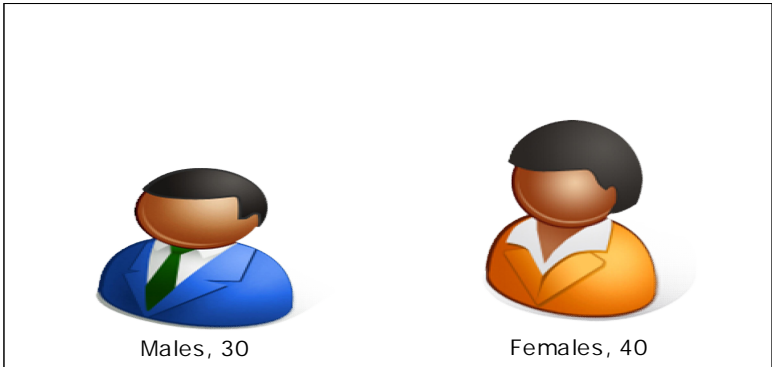
Figure 8 – Survey Respondents' Things that Need to be Improved in Ashfield

A total of 74 people responded to the Community Survey. The survey asked the following questions:

- 1. Gender
- 2. Age Group
- 3. Cultural Background
- 4. Which of these topics do you think are more important for improving life in Ashfield? Please rank them from 1 to 6 with 1 being the most important and 6 the least important.
- 5. Would you consider helping in implementing some of the actions that you have suggested?
- 6. Would you like to be kept informed of this project?
- 7. What do you like about living in Ashfield?
- 8. What are the things that need to be improved in Ashfield to make it a better place to live in?
- 9. What can we do to make these improvements?
- 10. What do you think the community can do to help make Ashfield a better place to live in?

**Question 1: Gender**

A total of 74 people responded to the survey. Slightly more females responded to the survey with 40 surveys completed by women and 30 completed by men. Four people did not specify their gender.



**Figure 1 – Survey Respondents’ Gender**

### Question 2: Age Group

Approximately half of the respondents were in the 25 to 54 years age group (36). Just over a quarter of the respondents were 65 years and over (20). The smallest proportions of respondents were between 55 and 64 years (13) and 15 to 24 years (3).

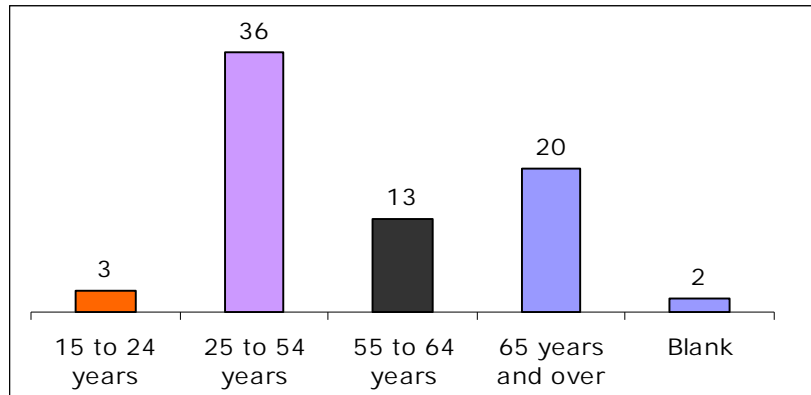


Figure 2 – Survey Respondents' Age

### Question 3: Cultural Background

The majority of survey respondents were Australian (40) followed by a much smaller number of English (5), Aboriginal Australian (3) and British (3). The remaining 20 people were from across 17 cultural backgrounds and three people did not respond to the question.

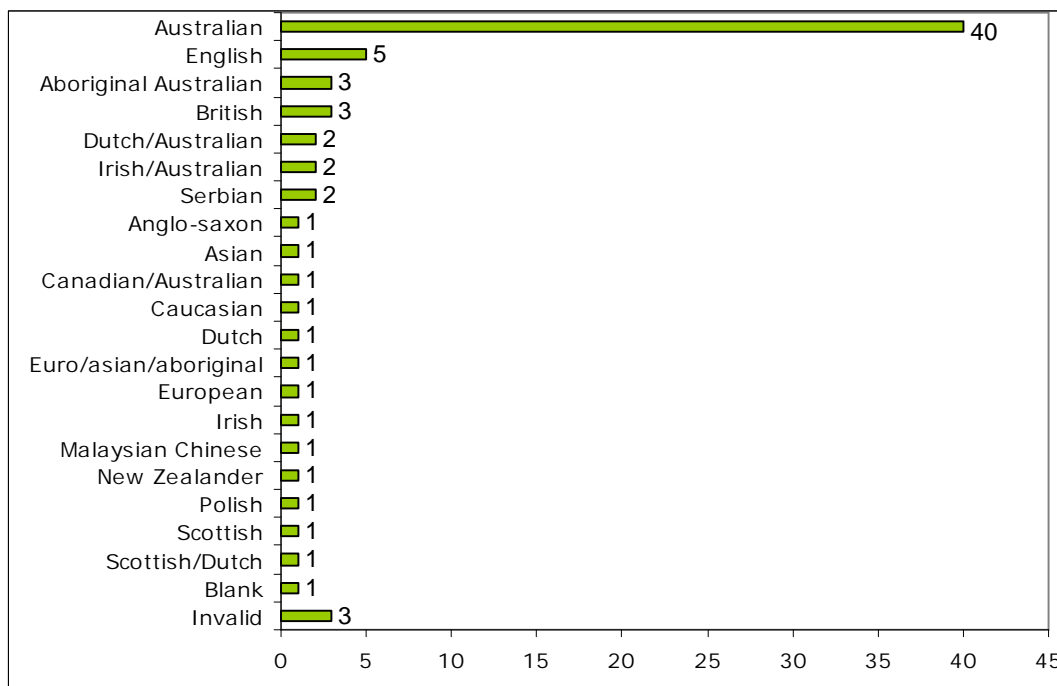
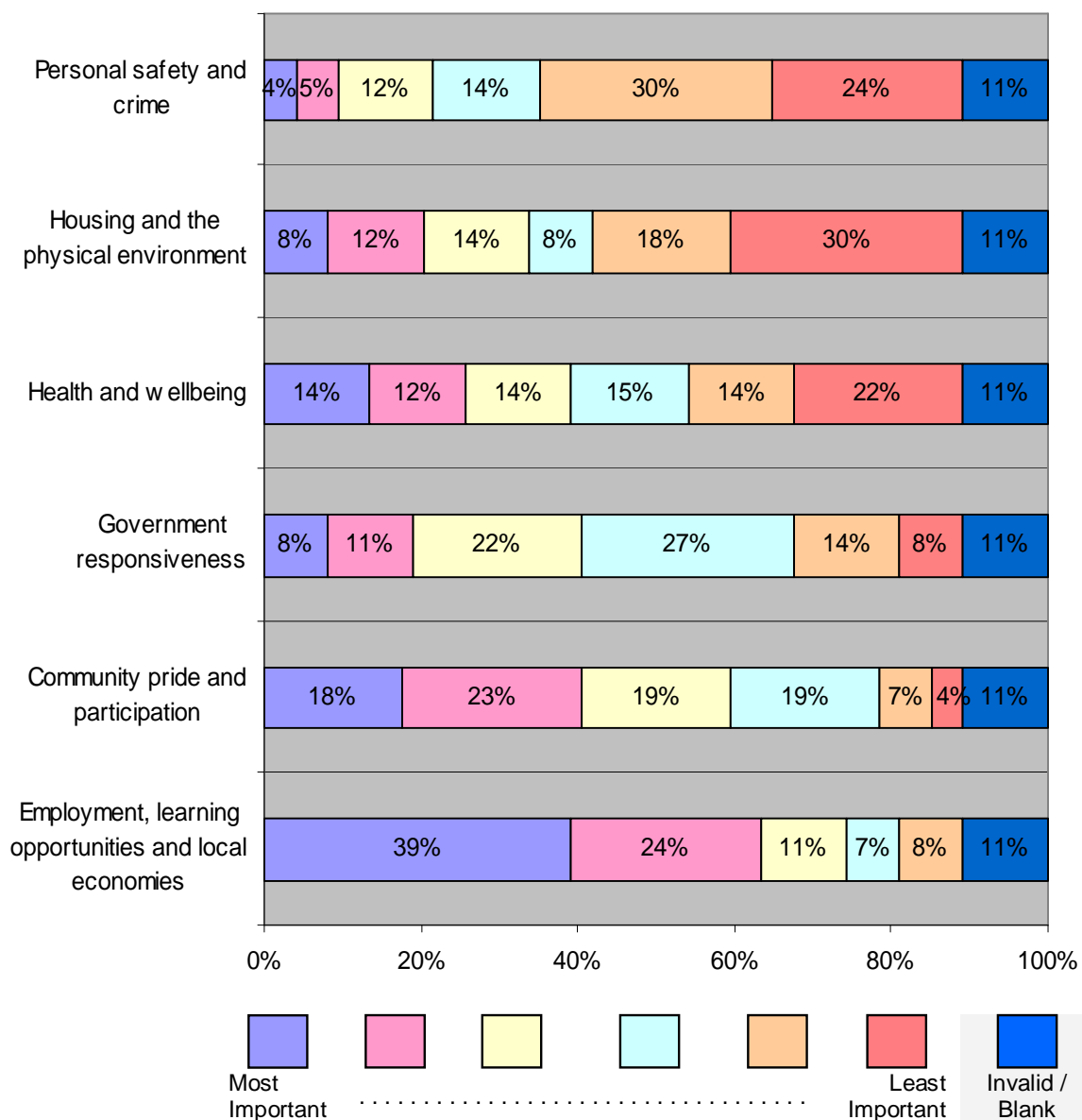


Figure 3 – Survey Respondents' Cultural Background

**Question 4: Which of these topics do you think are more important for improving life in Ashfield? Please rank them from 1 to 6 with 1 being the most important and 6 the least important.**

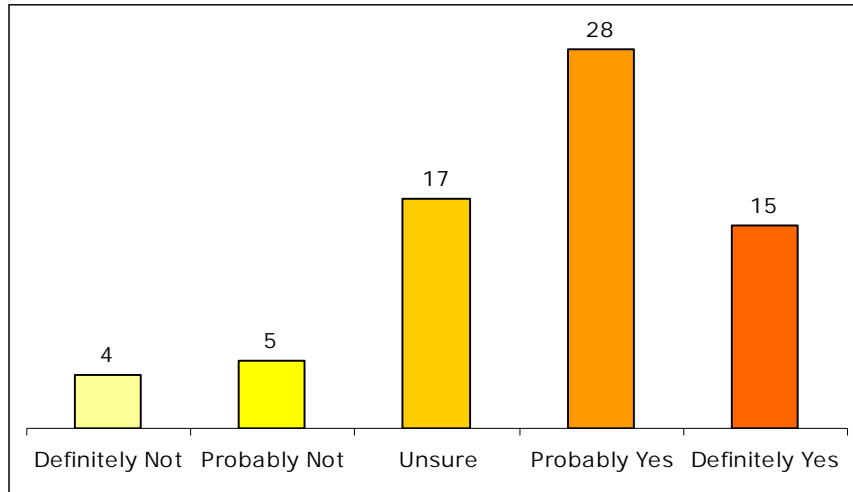
Employment, learning and local economies was ranked as the most important aspect for improving life in Ashfield and Personal Safety and Crime was ranked at the least important.



**Figure 4 – Survey Respondents’ Most Important Topics for Improving Life in Ashfield**

**Question 5: Would you consider helping in implementing some of the actions that you have suggested?**

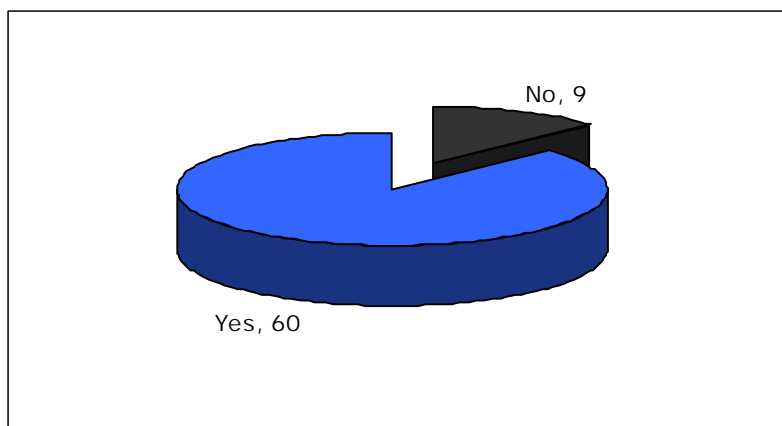
The largest proportion of respondents (28) said 'Probably Yes' to helping with the implementation of actions arising from the ACAP. 15 said 'Definitely Yes' and 17 were 'Unsure'. A small proportion of people said 'Probably Not' or 'Definitely Not' (10). There were five respondents that did not answer this question.



**Figure 5 – Survey Respondents' willingness to help in implementing actions**

**Question 6: Would you like to be kept informed of this project?**

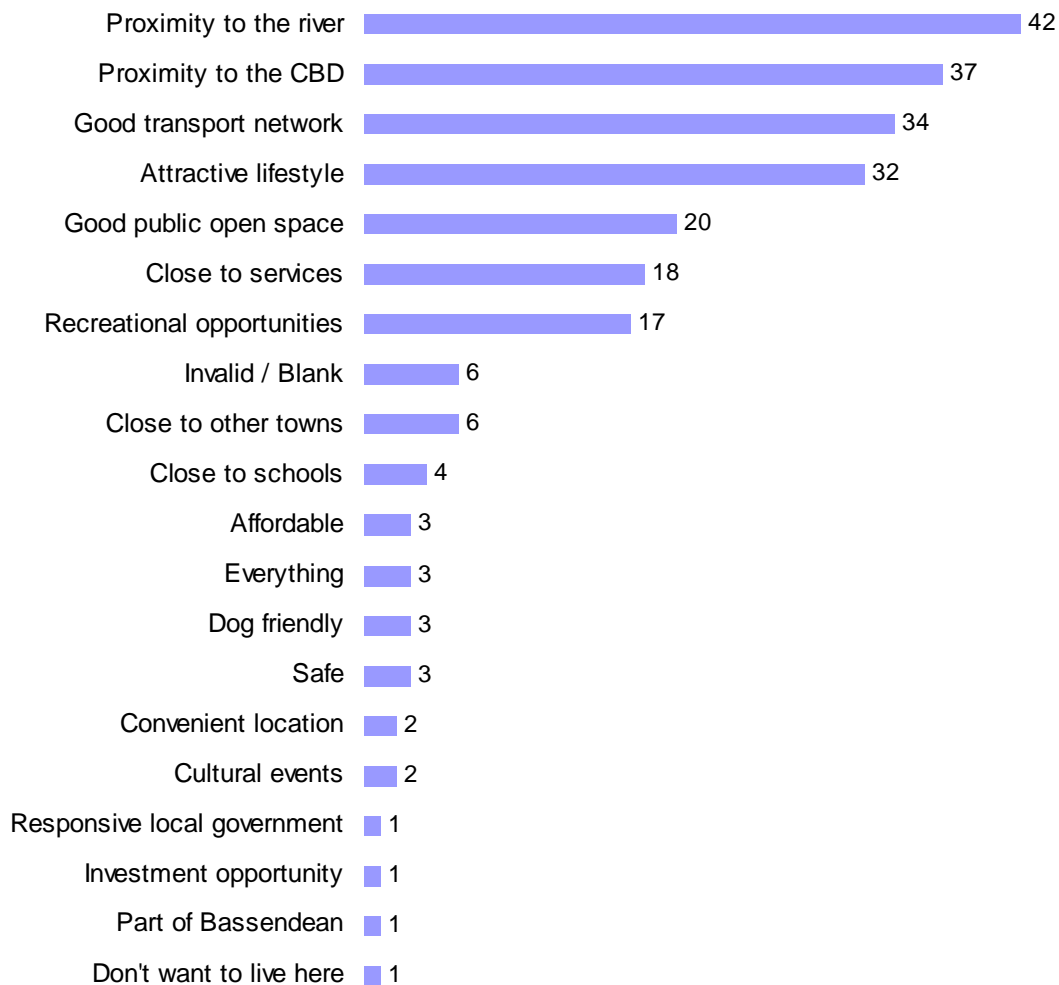
The majority of people (60) would like to be kept informed of the ACAP project. A small proportion (9) said 'No'. There were five respondents that did not answer this question.



**Figure 6 – Survey Respondents' interest in staying informed**

### Question 7: What do you like about living in Ashfield?

The most popular reasons for why resident’s like living in Ashfield are: proximity to the river, proximity to the CBD, good transport network, attractive lifestyle, good public open space, close to services and recreational opportunities.



**Figure 7 – Survey Respondents’ Likes about Living in Ashfield**

Refer to the table below for detailed notes on each of the themes identified in this question.

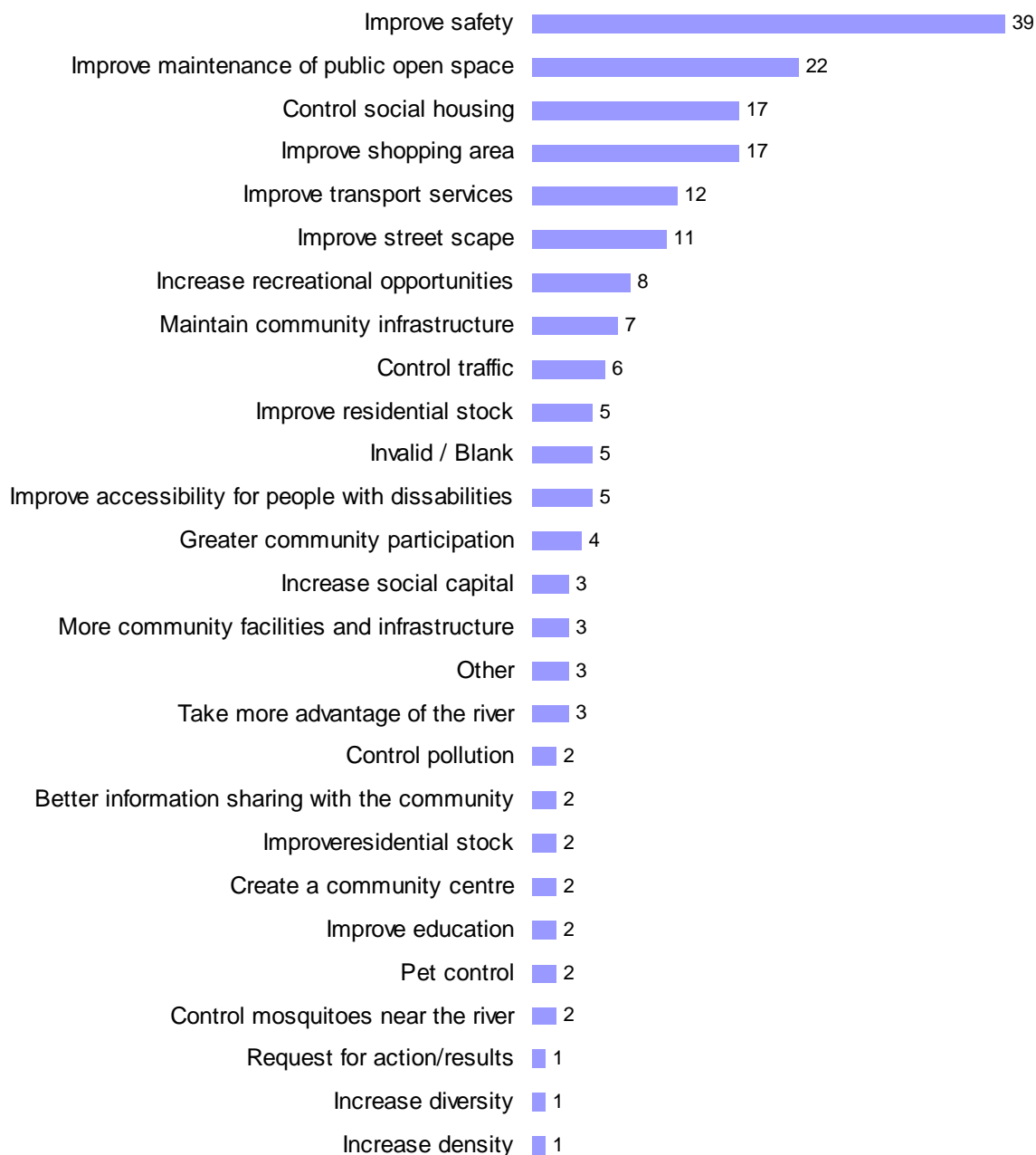
Notes on themes for Question:

What do you like about living in Ashfield?

- ~ *Recreational opportunities* The recreational opportunities liked by respondents were that Ashfield is a good suburb for cycling, walking, boating and fishing; well maintained riverside walks; good parks and reserves; great opportunities to get out with the family; BBQs; sports ground and club;
- ~ *Good transport network* It is considered that there is a good transport network including busses, train and cycle ways; there is good public transport; access to major roads like Tonkin Highway; close to the airport;
- ~ *Proximity to the CBD* The suburb is located close to the Perth CBD
- ~ *Attractive lifestyle* The lifestyle in Ashfield is considered quiet and peaceful; like a country town; very social; community spirit; friendly neighbourhood; people know each other and look after each other; low density; mixed community; little traffic; large blocks;
- ~ *Safe* Ashfield is believed to be a safe suburb;
- ~ *Proximity to the river* Close to the river
- ~ *Close to services* Close to amenities, shops and shopping centres in Bassendean, Midland and Morley;
- ~ *Dog friendly* Dogs are able to roam free and socialise;
- ~ *Everything* Respondents said to like everything about Ashfield;
- ~ *Part of Bassendean* Respondents like that Ashfield is part of Bassendean;
- ~ *Investment opportunity* Respondents live in Ashfield because it has potential for future development and subdividing properties; it is a suburb in transition;
- ~ *Affordable* Housing in Ashfield is reasonably priced; affordable in general;
- ~ *Don't want to live here* Respondents don't like Ashfield and don't want to live in it;
- ~ *Close to schools* Ashfield is close to schools;
- ~ *Good public open space* Lots of parks, trees and open space; Ashfield flats and sandy beach;
- ~ *Cultural events* Residents like the cultural events available like concerts in the park; fireworks;
- ~ *Responsible local government* The Shire of Bassendean attends to problems as they arise;
- ~ *Close to other towns* Close to Swan Valley, Midland and Morley;
- ~ *Convenient location* Convenient location;

**Question 8: What are the things that need to be improved in Ashfield to make it a better place to live in?**

The most popular things that survey respondents believe need to be improved in Ashfield to make it a better place to live are: improve safety, improve maintenance of public open space, control social housing, improve shopping area, improve transport services and improve street scapes.



**Figure 8 – Survey Respondents’ Things that Need to be Improved in Ashfield**

Refer to the table below for detailed notes on each of the themes identified in this question.



Notes on themes for Question:

What are the things that need to be improved in Ashfield to make it a better place to live in?

- ~ Improve safety                      This category includes comments like increase the number of police patrols; assaults; security; sexual harassment on reserve; reduce the number of undesirables; home invasion; vandalism; abuse near the public phone and IGA; hooning; graffiti; improve safety around trains station, shop and oval; improve lighting using solar technology; improve lighting at train station; install safety surveillance at train station especially at night; more lighting on playing oval; instate security patrols at night around the Ashfield Reserve and shops;
- ~ Control traffic                      Includes control traffic on Guildford Road; corner on Coulston Road; install speed humps;
- ~ Improve maintenance of public open space                      Maintenance issues include more corner verge mowing; provide residents with cheap manure or mulch; flooding of walking areas along the flats; improve parks, park facilities Council gardens and islands; verge bins near the shops; IGA frontage is usually dirty; littering; greener lawns/gardens near train station; tidy streets and industrial area; improve green waste collection and recycling bins collection; residents could participate in tree planting and street cleaning; plant more bushland and restore parts of Ashfield Flats;
- ~ Pet control                          Control of the number of cats per household; dog owners to clean up after their dogs;
- ~ Improve residential stock                      This category includes fixing up homes in disrepair; constructing quality new homes; increase building of quality housing; restrict building of low quality housing; enforce minimum presentation standards for housing;
- ~ Increase density                      Includes: allow construction of units; build more houses;
- ~ Control social housing                      This includes comments like the housing commission should take more responsibility for their tenants; control tenants behaviour; supervise condition and maintenance of social housing; control/reduce the amount of social housing; restrict further building of social housing; better selection of tenants;
- ~ Improve streetscape                      Includes plant more trees on council veges especially deciduous and tough trees; underground power; plant more native vegetation;
- ~ Control pollution                      Pollution from local factories, brickworks, roof residue and soil samples; control noise from industrial and stereos;
- ~ Control mosquitoes near the river                      Control mosquitoes in Ashfield Flats and along the river;
- ~ Greater community participation                      Includes better participation in living; more contact; more discussion on how to make it a better place;
- ~ Take more advantage of the river front                      Take more advantage of the river front like it is done in Maylands, Bayswater and Bassendean; better understanding of uniqueness of Ashfield on the Swan River; build a restaurant hotel or tavern near the river;
- ~ Improve transport services                      Improve bus service; upgrade railway station and its accessibility; more bus shelters; more frequent bus stops; more buses; buses to stop at Ashfield for Morley, Midland and Perth; underground walkway/overpass; don't move platform

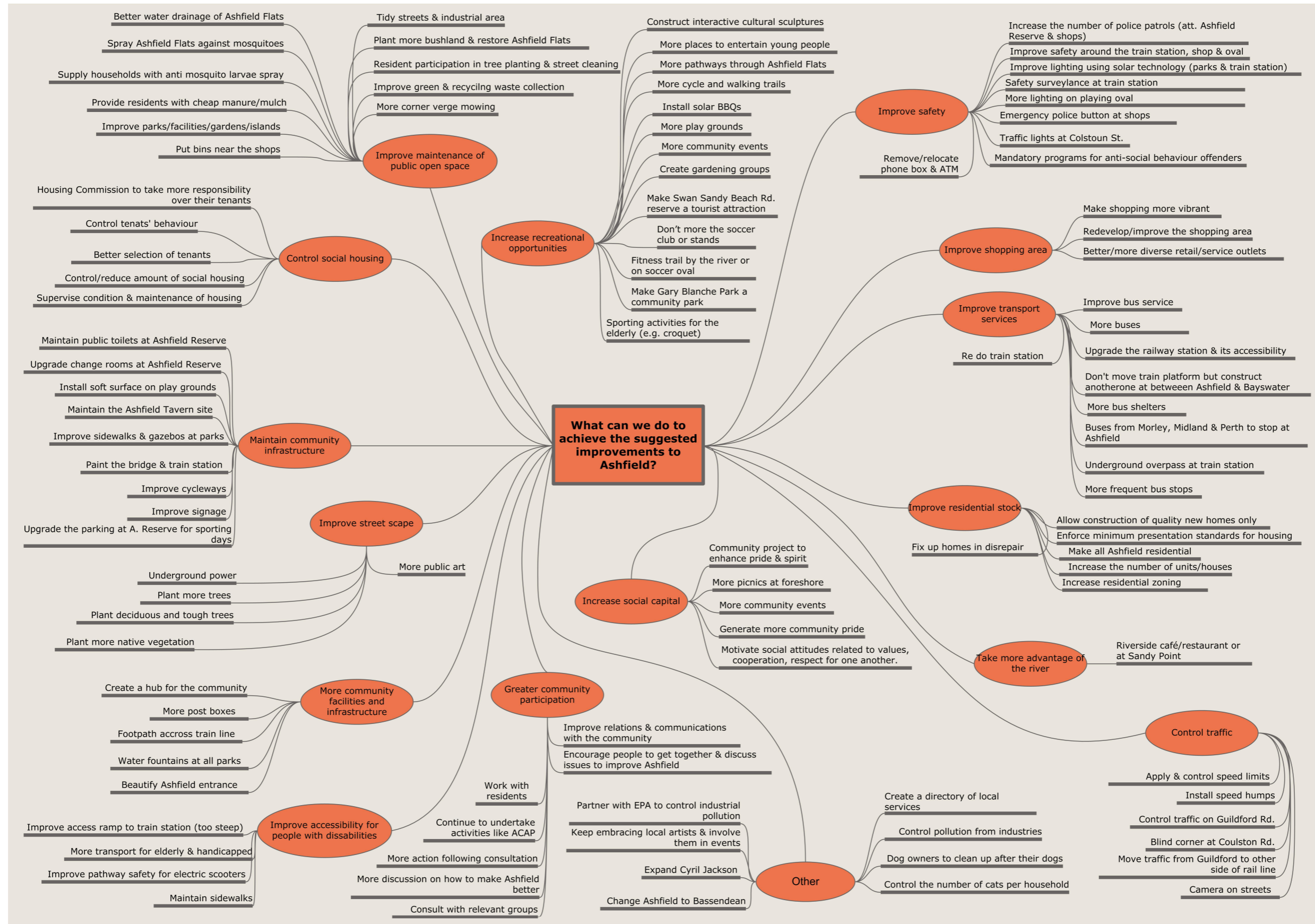
Notes on themes for Question:

What are the things that need to be improved in Ashfield to make it a better place to live in?

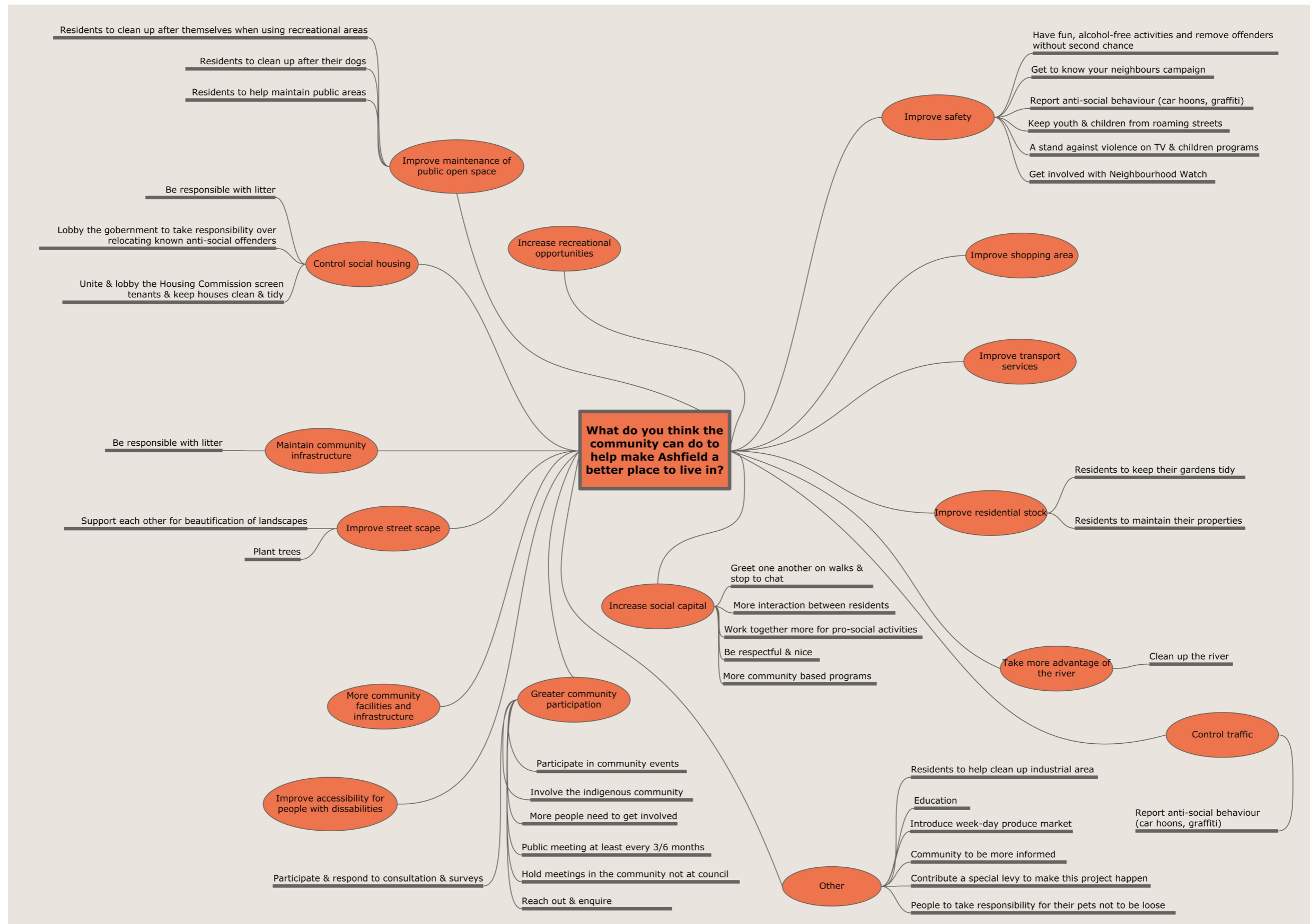
but construct another between Ashfield and Bayswater;

- ~ Better information sharing with the community  
Includes create a directory of local services; inform the community about feedback/information from government departments about potential projects and project updates;
- ~ Increase diversity  
Motivate a greater socio-demographic mix;
- ~ Create a community centre  
Create a centre or hub where the community would like to congregate;
- ~ Improve shopping area  
Includes better and more retail/service outlets; include a post office, doctor's surgery; redevelop or improve the shopping area; make shopping area more vibrant; include a well controlled tavern;
- ~ Improve accessibility for people with disabilities  
Includes maintenance of sidewalks (e.g. clearing of overgrown bushes); improve pathway safety for electric scooters; improve access ramp to the train station (too steep) for the elderly or people with a medical condition; more transport for elderly and handicapped;
- ~ Request for action/results  
Includes comments like get projects finished;
- ~ Maintain community infrastructure  
Maintain or redevelop community infrastructure such as community buildings, childcare and playing fields; improve sidewalks and gazebos in local parks; paint the bridge and railway station; improve cycle ways; improve signage; maintain the Ashfield Tavern Site; upgrade the parking at Ashfield Reserve to cope with junior sporting days; maintain public toilets at Ashfield Reserve; upgrade change rooms at Ashfield Reserve and construct separate ladies and gentlemen's toilets/change room; install soft surface on play grounds instead of sand;
- ~ Improve education  
Includes the following suggestions: improve results of local primary school;
- ~ Increase recreational opportunities  
Includes: install solar barbecues; construct interactive cultural sculptures; construct more play grounds for children; more community events; create gardening groups; construct more pathways through Ashfield Flats; more cycle ways and walking trails; more places to entertain young people;
- ~ More community facilities and infrastructure  
Includes: more community facilities like post boxes; construct footpaths across train line, along western side of railway lines and of adequate standard for people with disabilities; beautify Ashfield entrance; water fountains at all parks/reserves;
- ~ Increase social capital  
Includes: more community pride in the neighbourhood; social attitudes concerning community values, cooperation, respect for one another;
- ~ Other  
Includes: keep embracing local artists and involve them in events, etc; tree plantings are too close to boundary and council should advise residents; get ride of the industrial area

**Question 9: What can we do to make these improvements?**



**Question 10: What do you think the community can do to help make Ashfield a better place to live in?**



# APPENDIX G

## Prioritisation of Issues

January 2008

A workshop was conducted with the Ashfield CAN on XXdateXX at the Town of Bassendean to:

- Explain the background to the ACAP project and the methodology;
- Present the key findings of the consultation process and the issues identified;
- Agree on strategies for addressing the issues;
- Prioritise the issues identified;
- Determine the terms of reference for the ACAN; and
- Determine the meeting frequency, length, time, venue, etc. for the ACAN.

The following stakeholders participated in the workshop:

- XXXX

Themes	Issues		Prioritisation Criteria				
			Short	Medium	Long	Simple	Complex
1. Housing and the physical environment	i.						
	ii.						
	iii.						
2. Employment, learning opportunities and local economies	i.						
	ii.						
	iii.						
3. Personal safety and crime	i.						
	ii.						
	iii.						
4. Health and wellbeing	i.						
	ii.						
	iii.						
5. Government responsiveness	i.						
	ii.						
	iii.						

<b>6. Community pride and participation</b>	i.						
	ii.						
	iii.						