

What's new around Town...

Redevelopment of Eden Hill Tavern site

At its last meeting Council gave the green light to the redevelopment of the site which will involve the demolition of the existing tavern and the land being developed with 35 housing lots.





General Meeting of Electors

Local Government Act 1995

NOTICE is hereby given that a General Meeting of Electors of the Municipality of the Town of Bassendean will be held in the Bassendean Community Hall, 48 Old Perth Road, Bassendean, at 7.00 pm on Tuesday 30 October 2012.

Order of Business

- 1.0 Attendances & Apologies
- 2.0 Report of the Mayor
- 3.0 Receiving of the Annual Report, including the Annual Financial Statements and Auditor's Report
- 4.0 General Business

Electors are encouraged to take the opportunity to raise questions of the Mayor and Senior Officers of the Council.

- 5.0 Closure

Cr John Gangell, Mayor

Success Hill Reserve's new jetty now open

On Monday 3 September 2012, the Hon Alyssa Hayden MLC, Member for the East Metropolitan Region, and the Mayor of the Town, Councillor John Gangell, jointly officially opened the reconstructed stairs, jetty and floating fishing platform at the Success Hill Reserve.

The unveiling of the plaque took place on the jetty platform at the river's edge in front of Councillors, stakeholders and representatives from the Success Hill Action Group and the Bassendean Walking Club.

After the opening of the stairs and jetty, Mayor Gangell said, "The community has waited quite some time for these works to be completed so that they can once again have access to this beautiful part of the Swan River. I am sure that everyone will be thrilled with the improvements made to the area."



Nominations open for 50 Year Service Badge


THE Western Australian Government introduced the 50 Year Volunteer Service Badge in 2011 to recognise and celebrate those volunteers who have contributed at least 50 years of service to one organisation.

Past and current volunteers who have contributed to the mission and functioning of a group, club, or organisation or to a local government or a state government department are eligible to be nominated by their organisation.

The Minister for Seniors and Volunteering will present this prestigious award at a special event on 'Thank a Volunteer Day' in December each year. Recipients unable to attend these Perth events can make alternative arrangements including a presentation from a Member of Parliament.

Some organisations conduct their own award programs that recognise long service. Volunteers who have received long service awards through other organisational award programs will also be eligible to receive a Western Australian Volunteer Service Badge.



 **Nomination forms can be obtained from the Town's Volunteer Centre at 50 Old Perth Road, Bassendean. Nominations may be made at any time of the year.**

Funding grant from Disability Services Commission

The Town of Bassendean's Seniors and Disability Services has been successful in obtaining funding from Disability Services Commission for a two year project to support the Town's sport and leisure clubs and organisations in becoming more welcoming for people with a disability.

The Count-Me-In Inclusion Grant will be used to employ a Project Officer to work on the project that aims to support individual's aspirations to belong and be valued as well as assist groups and clubs in becoming more welcoming.

The project promotes social and physical wellbeing for all participants with or without a disability by encouraging skill development in sport and the confidence in the participation of everyday activities and community sporting groups. It seeks to provide opportunities for all community members to get together, share activities and build friendships.

The Project Officer will set up a network of coaches, champions and buddies to assist participants connect with mainstream leisure and sporting clubs. Mainstream organisations and those involved in supporting people with a disability, their families and carers are encouraged to partner in supporting participants have a fair go at being involved in sports and leisure groups in their community.

 **For more information contact Seniors & Disability Services on 9279 6588.**

Art exhibition at the Library

THE Bassendean Memorial Library will again feature an exhibition of work from artist Suzanna Konrad from Monday 26 November until Friday 14 December.

Suzanna works in an eclectic mix of prints and watercolour works in a variety of sizes.

Her first library exhibition was in late 2008 and this next exhibition will build on the life themes and observations Suzanna has experienced and interpreted in the intervening years.

Start up of mosquito control program

IN SEPTEMBER, the Town commenced its Mosquito Control and Monitoring Program for this new mosquito breeding season.

Heavy and extensive breeding has already been found at the Ashfield Flats and very light breeding in other areas including, Bindaring Park (Harcourt Street to Bassendean Parade).

Mosquitoes breed in standing water!

After the winter rains, we all have the potential for mosquito breeding to occur on our own properties. This includes buckets, wheelbarrows, ponds, green swimming pools, pot-plants, etc. The Town has already started to receive complaints regarding neighbours' properties breeding mosquitos. So please check your front and rear yards for any containers that may be holding water. Mosquitoes only need a few millimetres of water to breed.

Ross River Virus is a mosquito-transmitted virus that is occurring more frequently in the metropolitan area. The mosquito that breeds in buckets and pot-plants (yard breeders) are transmitters of this virus.

Measures must be taken by residents and visitors to any areas around the Swan River, and other mosquito breeding grounds, to protect themselves and minimise the risk of contracting a mosquito-borne disease. Such measures include:

- reduce outdoor activities during high mosquito activity periods (dawn and dusk);
- cover up by wearing light coloured long sleeve shirts and long pants that are loose fitting;
- apply personal insect repellent containing DEET or Picaridin if possible;
- ensure fly screens to doors and windows are fitted and maintained; and
- check your property for potential breeding sources.

Notice to all land owners and occupiers: Fire break notice

Bush Fires Act 1954

The Town undertakes annual fire inspections to ensure all properties comply with the Bush Fires Act 1954 and the Council's Fire Management Practices.

Prior to 31 October 2012, properties of all sizes within the Town of Bassendean shall be cleared of combustible material from the whole of the land. All combustible material is to be slashed or mowed to ensure that it is no longer than 10 cm in height from 31 October 2012 until 31 March 2013.

Living trees, shrubs, plants under cultivation and maintained lawns are excluded from the clearing requirements.

Any variations in the standard of firebreaks are to be the subject of a specific request to the Town's authorised Firebreak Inspector and any such variation shall be for one year only.

The Penalty for failing to comply with the *Bush Fires Act* is a modified penalty of \$250 or a fine of up to \$5000 by the court. The owner of the property in default is liable whether prosecuted or not, to pay the cost of performing the work directed by the required date.

Please note: The Town of Bassendean's Local Laws prohibit the burning of foliage or bush without the Town's prior consent. If you wish to make enquiries concerning this, please contact the Council's Ranger Service on 9377 7480 for an evaluation of your land.

Chimney and flue fires

Fire statistics show that every year, thousands of houses have a fire in the chimney or flue.

This is due largely to infrequent sweeping, which results in a build-up of flammable tar within the appliance or flue.

Over time, ash and soot can build up on the inside of the flue or chimney. If it is not cleaned out, the build-up can ignite causing a chimney or flue fire where the flames shoot out of the top of the chimney or flue.

Creosote is the black-brown substance that sticks to the inner walls of the chimney or flue. Creosote builds up over time and is caused by burning your fire for long periods on a low air setting or using unseasoned wood. Creosote is highly combustible. A build-up of creosote can cause chimney and flue fires.

To help reduce the build-up of residue in your chimney or flue and reduce the risk of a chimney or flue fire have your flue or chimney cleaned at least once a year. This will also help ensure that your heater will work efficiently.



Bendigo Bank
Seniors' Week 2012
is supported by
the Department of
Communities and the
Council on the Ageing.

Wind in the Willows celebrates Children's Week

To celebrate Children's Week, the Town of Bassendean will be hosting a community walk for children aged 12 years and under through Ashfield Flats, so please join us for this fantastic family event.

When: Sunday 28 October

Where: Sandy Beach Reserve

Time: 9:30 am registration for 10.00 am

All children who register will go into the draw to win raffle prizes.

After walking along Ashfield Flats, we will return to Sandy Beach for a sausage sizzle and children's entertainment.

For more information about this event contact Michelle Hillary on 0438 964 657, or check the website at www.bassendean.wa.gov.au.

Bendigo Bank Seniors' Week 2012

Seniors' Week will be held from Sunday 11 November to Saturday 17 November at various venues. The Town of Bassendean is pleased to offer a range of fun and exciting events for the community. There is free entry to the events but please note that events are ticketed due to popularity. Contact Town of Bassendean Recreation Services or individual groups for ticket details.

Remembrance Day

This year, the opening of Seniors' Week coincides with the Town's Remembrance Day commemoration on 11 November.

Where: Bassendean War Memorial, Old Perth Road, Bassendean

Time: Arrival from 10.30 am. Service and reflection at 11.00 am.

The service will be followed by some entertainment, lunch and the official opening of Seniors' Week in the Bassendean Community Hall.

Other events

Other events currently being organised for the week include: Dance-a-thon, Senior Citizens' WAAPA event, Multicultural Seniors' Event, Gala Day, Come 'N Try Lawn Bowls and the Closing Ceremony. The Bassendean Walking Group, with the assistance of the Heart Foundation, will conduct a community walk celebrating Seniors' Week in 2012. Various forms of musical entertainment will be provided throughout the Seniors' Week events, including students from La Salle College and the top Western Australian Academy of Performing Arts students.

For further details visit the Town of Bassendean website at www.bassendean.wa.gov.au.



Premier's Australia Day Active Citizenship Awards 2013

Recognise your local citizens and community groups with an Australia Day Award.

Nominations are now open for residents or local organisations within the Town of Bassendean for the Premier's Australia Day Active Citizenship Awards.

These awards are presented annually to local citizens and organisations that have made outstanding contributions to our community. The awards are held in conjunction with the Australia Day Council of Western Australia, the Western Australian Local Government Association and the Office of the Premier and Cabinet.

Awards are presented in the following categories:

- Outstanding community contribution by a local citizen of 25 years of age or over.
- Outstanding community contribution by a local citizen under 25 years of age.
- Outstanding community contribution by a local group or community event.

Individuals and local organisations are invited to make a nomination by completing a form available from the Town of Bassendean's Customer Service Centre, or by logging on to www.ausdaywa.com.au.

Nominations for the awards close on Friday 23 November 2012

and should be addressed to: Chief Executive Officer, Town of Bassendean, PO Box 87, Bassendean WA 6934.

The awards will be presented at the Town's annual Australia Day event at Ashfield Reserve on 26 January 2013.



Proposed Crown Reserve acquisitions by land exchanges

At its meeting on 28 August 2012, the Town of Bassendean resolved to consult the community and seek its views on the proposed acquisition of the following Crown Reserve properties:



Reserve 37441: Wilson Street car park
 – corner of Wilson Street and Guildford Road, Bassendean
Land area: 3356m² Zoned: Local Open Space



Portion of Reserve 31252: Town Administration Building
 – 48 Old Perth Road, Bassendean
Land area: Approximately 3000m² (for land occupied by Administration Office only) Zoning: Town Centre

Why does the Town want to acquire these properties?

Reserve 37441 on the corner of Wilson Street and Guildford Road is considered as a potential commercial development site and Council's ownership will assist with the Town Centre redevelopment. By taking ownership of the site the Town will position itself to become an active player in guiding the type of development occurring and to benefit from the appreciation in land values that will potentially be realised through the transformation of the Town.

Council considers that it is critical to acquire freehold title for the portion of Reserve 31252 (48 Old Perth Road), which is occupied by the Town Administration Building. It has invested massive funds over the years into the infrastructure and this should not be put at risk. This action will protect the community's asset particularly should this property be used in the future for any commercial purpose as part of the Town Centre redevelopment. It should be clear that only the portion of the Reserve comprised of the Town Administration Offices and the rear access to them is being sought for acquisition. The Library, Memorial Park, and Senior Citizens' Centre will not be affected by the proposed transactions.

How will the Town acquire freehold title to the properties?

The proposed acquisitions of the reserves will be done by land exchanges—that is, exchanging freehold Council-owned parcels of land for the Crown Reserve lands. The freehold properties are as follows:

- 17 & 19 Anstey Street, Bassendean (vacant land adjoining Crown Reserve)
- 1 Surrey Street, Bassendean (Pensioner Guard Cottage)
- 179 Guildford Road, Bassendean (vacant land adjoining RSL Hall).

What will happen to the freehold land?

There will be no impact on the community; they will be in Crown ownership and under the management of the Town of Bassendean for the benefit of the community. The identified freehold properties have clear community uses:

- 17 & 19 Anstey Road are considered by the local residents as integral to the adjacent public open space and it is desirable that the properties remain undeveloped;
- The Pensioner Guard Cottage (1 Surrey Street) is a heritage-listed dwelling of unique value to the Town of Bassendean; and
- 179 Guildford Road, this property is not seen as a property to develop because of its size, shape and location. It is currently serving as a car park for the RSL.

By exchanging these sites with the State Government, these properties will then become Crown Reserves. They will be vested in the Town of Bassendean and will be preserved for the community's use and public open space. This will eliminate any risk of the properties being sold in the future.



More information can be found by visiting www.bassendean.wa.gov.au, click on Reserve Acquisitions by Land Exchanges Project.

How long will all this take?

Depending on the response time from the State Government, the process in securing freehold title to the reserve land and subsequent re-zoning (in the case of Wilson Street car park), generally takes about 12 to 15 months.

Community views and support needed

Council is keen to seek the views of residents as to whether there is support to acquire the Crown Reserve land by a land exchange with Council-owned freehold properties.

For this project to move forward, the Town is required to consult with the community on the acquisition of the reserves and gain community support on the proposal. Without clear support for the proposal, Council will not proceed with the project.

Make your views known

Submissions can be made by:

- Visiting www.bassendean.wa.gov.au (and clicking on Reserve Acquisitions by Land Exchanges Project);
- Picking up a feedback form from either the Customer Service Centre (35 Old Perth Road, Bassendean) or the Bassendean Memorial Library (corner of Wilson Street and Old Perth Road); or
- Telephoning or emailing the Town to have a feedback form sent out to you (email: mail@bassendean.wa.gov.au or phone: 9377 8000).

Please note submissions close on 7 November 2012.

Local history and you: memory makers

The Bassendean Memorial Library is keen to add to its Local History information. Residents in the Town are our history and we would like to hear from you.

To help make the process easy for anyone wanting to contribute, we have prepared a "Memory Maker's" sheet that guides you through the process. The memory maker's sheet prompts you to think about family, places, people and photographs.

You can pick up a sheet, take it away, have a look at it, and think about putting your story onto paper, or record it in an electronic format. You can even give us a ring on 9279 2966 and we can post out the Memory Maker's sheet, if that is easier.

This is a great way to assist our efforts to capture today's history for tomorrow's children.



Bassendean Visual Art Awards

THE winners of the Bassendean Visual Art Awards categories for 2012 were:

Town of Bassendean Open Award (Acquisitive \$5,000)

Office Relationships by Nick Mahony (pictured above left with Mayor John Gangell)

Works on Canvas (\$1,000)

All We Need Is... by Christine Baker (pictured on front cover with Chris Chanter of the Hawaiian Group)

Works on Paper including Photography (\$1,000)

Watch this Space by Jane Grierson

3 Dimensional (\$1,000)

Casuarina by Nonie Jekabsons

Best Town of Bassendean Resident (\$1,000)

Hang Ten by April Ward

Young Persons Award—aged 13–21 years (\$500)

Untitled by Karesha Lee

Primary School Entrant (1 per school, 4 x \$100)

Ashfield Primary: *Silhouette Painting* by Ian (Year 3)

Bassendean Primary: *Star Wars* by Talon (6 years old)

Eden Hill Primary: *Untitled* by Lily (Year 6)

St Michael's School: *To Infinity & Beyond* by Lauren (Year 6)

The People's Choice Award (\$500) will be announced at the end of the Exhibition.

Council Calendar

MONDAY 29 OCTOBER

Hyde Retirement Village Annual General Meeting 1.00 pm

WEDNESDAY 7 NOVEMBER

Cultural Development Advisory Committee Meeting 6.00 pm

THURSDAY 15 NOVEMBER

Cyril Jackson Physical Education & Community Recreation Centre Management Committee Meeting 8.30 am

THURSDAY 15 NOVEMBER

Seniors' Week Coordinating Committee Meeting 12.30 pm

WEDNESDAY 21 NOVEMBER

Economic Development Advisory Committee Meeting 5.30 pm

TUESDAY 27 NOVEMBER

Ordinary Council Meeting 7.00 pm

THURSDAY 29 NOVEMBER

Reconciliation Action Plan Working Party Meeting 12 noon

THURSDAY 29 NOVEMBER

Youth Advisory Council Meeting 5.00 pm

WEDNESDAY 5 DECEMBER

Audit & Risk Management Committee Meeting 11.00 am

WEDNESDAY 5 DECEMBER

Local Emergency Management Committee Meeting 1.00 pm

THURSDAY 6 DECEMBER

Local Studies Collection Management Committee Meeting 9.30 am

WEDNESDAY 12 DECEMBER

Access & Inclusion Committee Meeting 10.00 am

TUESDAY 18 DECEMBER

Ordinary Council Meeting 7.00 pm

Justice of the Peace office

The Town of Bassendean provides a Justice of the Peace document witnessing centre at the Bassendean Memorial Library at 46 Old Perth Road, Bassendean on Wednesdays from 10.00 am to 12 noon.

A Justice of the Peace can witness official documents, administer an oath or affirmation, and take an affidavit.

'recognising our past
celebrating the now
creating the future'

Town of Bassendean

48 Old Perth Road, Bassendean WA 6054

PO Box 87, Bassendean WA 6934

T: 9377 8000 F: 9279 4257

E: mail@bassendean.wa.gov.au

www.bassendean.wa.gov.au

Advancing Perth's Eastern Region

ABRIDGED

Annual Report 2011–2012

AND FINANCIAL STATEMENTS FOR THE YEAR ENDED 30TH JUNE 2012

The full Annual Report is available from the Customer Service Centre or can be viewed as an Adobe Acrobat® pdf or Flash file from the Town of Bassendean website at www.bassendean.wa.gov.au > Information and Feedback > Strategic and Statutory Reports and Plans.





Mayor's Report

This year the Town of Bassendean Council has undergone the biggest political reform since the Town's establishment, with a reduction in the number of elected representatives from nine to six and abolishing the ward system.



The Town has also been very proactive in consultation with our community with regards to the Local Government Reform process, and have strongly advocated remaining an independent local authority.

Adaptation of policies has also been a strong feature this year and the environment has been centre-stage with the adaptation of the Local Climate Change Action Plan, Weed Management review, Broadway Arboretum Concept Plan and committee members appointed to the Tree Consultative Committee and the Interagency Foreshore Working Group.

Other policies reviewed or endorsed by Council include the Parking and Traffic Management Study and the Town Planning Scheme review.

Redevelopment goes ahead

Redevelopment within the Town is at a high point with the following approved to commence construction: the Bassendean Village Shopping Centre renewal; a five-storey, mixed-use development on the former squash court site on Old Perth Road; a 20-unit development adjacent to the Masonic Hall in Wilson Street; and consultation commenced for Stage 1 of the Bassendean Oval Redevelopment.

Infrastructure projects progressed or constructed within the Town included Point Reserve toilet block, Old Perth Road street lighting, underground power in Ashfield, completion of the bike





path from Tonkin Highway to Bassendean Train Station, the Jubilee path and outdoor gym, Mary Crescent Gathering Site, a new iconic can bar at Steel Blue Oval, and over 100 additional car parking bays will be provided at the Bassendean Train Station.

Successful public events

Community spirit continued to be high with a raft of public events, including Australia Day, Old Perth Road Markets, Seniors' Week, NAIDOC Family Day, Bassendean Visual Art Awards, BOOM Festival, Volunteer thank you day, and the Anzac Day Service.

One of the major success stories of the year was the Town entering into an agreement with Movies by Burswood to have an outdoor cinema venue in Bassendean to the delight of the thousands of residents who enjoyed the screenings and atmosphere provided by the movies.

Extending services to the community

Other highlights throughout the year include the location being chosen for the proposed Family and Children's Services Centre,





a Justice of the Peace signing centre being established, and the Town sponsoring the CEBA Small Business Awards.

And many thanks...

All of the above achievements would not be possible without the support of the Town's staff, and on behalf of the community and Council I would like to thank all the staff at the Town of Bassendean for their ongoing service and commitment they provide to our community.

To all the wonderful community members who volunteer to assist year in year out thank you—we could not do it without you.

To the Councillors of the Town of Bassendean, thank you for your efforts in moving Bassendean forward in this past year.

To all ratepayers, residents, community groups, sporting clubs, business owners and all other stakeholders within the Town, thank you for your continued support and I look forward to working with you all over the coming year.

Mayor John Gangell





Chief Executive Officer's Report

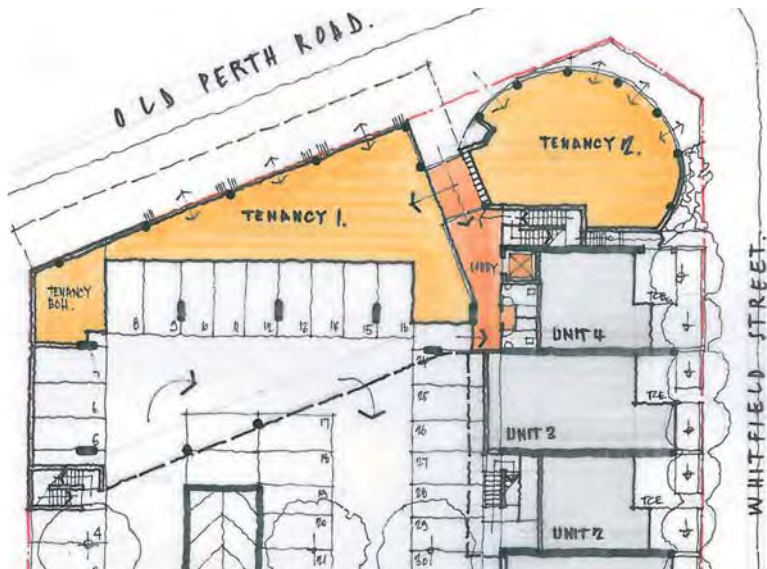


IT IS WITH concern that I start yet another *Annual Report* with advice that Local Government reform remains a considerable distraction for the Town and a consumer of staff and financial resources as the staff and Council work diligently to comply with the Minister's new Integrated Planning Framework, which requires compliance by all local governments at 30 June 2013, and at the same time we await the results of the independent, three-person panel appointed by the Minister to review metropolitan local

governments—with a view to reducing the numbers and changing boundaries. The Minister has had the report for some months now after the panel dealt with community and local government submissions. It is now likely that the final report will again be released for public comment requiring yet more detailed responses from local government. It has been a protracted and, at times, frustrating process which began in 2009 and has taken a number of shifts during the course of the subsequent years, with each shift demanding detailed and lengthy responses to be prepared for, as yet, no result or clear way forward.

On a brighter note, the year under review has seen the Council implement strategies for providing resources to meet the Town's infrastructure replacement needs, significant environmental results, and exciting projects for the benefit of residents.

Land disposals by the Town have seen a significant increase in Council's Reserve Funds, providing a nest egg for Council to pursue upgrades to ageing drainage infrastructure and major capital works projects, which will be deliberated on during this current financial year to ensure the projects chosen meet the





community's needs and aspirations. One of the projects that Council had been considering was the upgrade of the lighting in Old Perth Road to brighter but more energy efficient LED lighting. However, Council has been successful in securing Commonwealth funding for this project on a dollar-for-dollar basis which has allowed the funds to be retained for other purposes.

Whilst on this environmental vein, it is pleasing that the Town has now reached Milestone 4 in both Corporate and Community categories of the Water Campaign in recognition of the success that has been achieved by the Town in significantly reducing its water consumption.

Residents may have also noticed the new toilet block at Point Reserve and associated solar lighting and playground upgrades, as well as the new stairs and fishing platform at Success Hill, which is the first stage of a major rehabilitation program for that reserve which will include further foreshore restoration works, erosion mitigation and plantings. The Town has wrestled for some years with the infestation of exotic weeds at Success Hill and the Town's sustained and targeted weed control program is now bearing fruit with reports of

native plants being seen at the reserve in larger numbers and in good health.

Whilst there have been many good news stories in the year under review, including the undergrounding of power in Ashfield, the Town faces some challenges into the future. Quite apart from the uncertainty of the Reform Agenda, legislative changes across a number of State Acts will affect the Town, with a new *Building Act*, amendments to the *Local Government Act*, and a new *Cat Act* being just a few that impact directly on local government. Coupled with increasing utility charges, a Carbon Tax, increasing waste disposal costs, and the recent appearance of the formerly exotic pest, sting nematodes, in the turf on some of the Town's major sporting fields, we face a grab bag of issues which will need to be dealt with by staff under the stewardship of your Council.

It has again been a delight to work with excellent staff and a committed Council to serve a community as active and involved as the residents of the Town of Bassendean.

Bob Jarvis
Chief Executive Officer



Statement of Comprehensive Income by Nature or Type

FOR THE YEAR ENDED 30TH JUNE 2012

	Note	2012 \$	2012 Budget \$	2011 \$
REVENUE				
Rates	22	9,370,132	9,324,125	8,905,794
Operating Grants, Subsidies and Contributions	28	2,474,775	2,570,587	2,477,974
Fees and Charges	27	3,428,083	3,413,891	3,121,760
Interest Earnings	2(a)	583,470	618,961	451,556
Other Revenue		1,063,724	915,948	743,924
		16,920,184	16,843,513	15,701,009
EXPENSES				
Employee Costs		(7,371,319)	(8,226,405)	(7,069,934)
Materials and Contracts		(5,547,911)	(5,248,650)	(4,862,019)
Utility Charges		(636,201)	(424,572)	(512,470)
Depreciation on Non-Current Assets	2(a)	(2,056,645)	(1,956,366)	(1,968,719)
Interest Expenses	2(a)	(151,067)	(114,240)	(121,305)
Insurance Expenses		(461,279)	(355,787)	(503,152)
Other Expenditure		(628,731)	(764,269)	(710,861)
Ashfield Underground Power Project	2(a)	(730,346)	–	–
		(17,583,500)	(17,090,289)	(15,748,460)
Non-Operating Grants, Subsidies and Contributions	28	439,437	577,338	493,579
Profit on Asset Disposals	20	241,229	213,548	116,365
Loss on Asset Disposal	20	(368,504)	(2,397)	–
Change in Equity: Joint Venture (EMRC)	16	652,934	–	449,270
		965,096	788,490	1,059,215
NET RESULT		301,780	541,714	1,011,763
OTHER COMPREHENSIVE INCOME				
		–	–	–
TOTAL OTHER COMPREHENSIVE INCOME		–	–	–
TOTAL COMPREHENSIVE INCOME		301,780	541,714	1,011,763

Notes to the Financial Statements are included in the full Financial Statements contained in the Annual Report.

Statement of Comprehensive Income by Program

FOR THE YEAR ENDED 30TH JUNE 2012

	Note	2012 \$	2012 Budget \$	2011 \$
REVENUE				
Governance		51,858	45,040	74,888
General Purpose Funding		10,803,165	10,548,737	9,993,163
Law, Order, Public Safety		127,188	158,550	115,718
Health		1,381,317	1,399,110	1,007,516
Education and Welfare		3,198,681	3,154,995	2,991,460
Community Amenities		209,900	207,000	213,738
Recreation and Culture		862,463	1,022,000	723,590
Transport		32,101	45,800	158,148
Economic Services		144,625	198,771	198,738
Other Property and Services		108,886	63,514	107,684
	2(a)	16,920,184	16,843,518	15,584,644
EXPENSES				
Governance		(645,531)	(680,364)	(759,650)
General Purpose Funding		(631,553)	(625,213)	(633,497)
Law, Order, Public Safety		(480,291)	(522,291)	(432,739)
Health		(2,156,430)	(1,819,956)	(1,964,015)
Education and Welfare		(3,588,685)	(3,560,777)	(3,199,730)
Community Amenities		(766,901)	(646,237)	(666,786)
Recreation and Culture		(4,930,701)	(5,338,726)	(4,600,373)
Transport		(2,972,683)	(2,962,925)	(2,719,449)
Economic Services	2(a)	(1,157,224)	(441,739)	(411,314)
Other Property and Services		(102,434)	(377,825)	(123,235)
	2(a)	(17,432,432)	(16,976,053)	(15,510,788)
FINANCE COSTS				
General Purpose Funding		(62,251)	(37,113)	(40,049)
Recreation and Culture		(88,817)	(77,127)	(81,257)
	2(a)	(151,067)	(114,240)	(121,305)
NON-OPERATING GRANTS, SUBSIDIES AND CONTRIBUTIONS				
Law, Order, Public Safety		–	45,000	17,458
Education and Welfare		105,000	16,350	36,045
Recreation and Culture		103,471	253,391	107,000
Transport		230,966	262,597	333,076
		439,437	577,338	493,579
PROFIT/(LOSS) ON DISPOSAL OF ASSETS				
Community Amenities	20	106,170	–	116,365
Governance		(39,211)	–	–
Education and Welfare		(13,455)	(2,397)	–
Recreation and Culture		(172,924)	–	–
Other Property and Services		(7,856)	213,548	–
		(127,275)	211,151	116,365
Change in Equity–Joint Venture	16	652,934	–	449,270
NET RESULT		301,780	541,714	1,011,763
OTHER COMPREHENSIVE INCOME				
		–	–	–
TOTAL OTHER COMPREHENSIVE INCOME		–	–	–
TOTAL COMPREHENSIVE INCOME		301,780	541,714	1,011,763

Notes to the Financial Statements are included in the full Financial Statements contained in the Annual Report.

Statement of Financial Position

FOR THE YEAR ENDED 30TH JUNE 2012

	Note	2012 \$	2011 \$
CURRENT ASSETS			
Cash and Cash Equivalents	3	7,236,203	3,530,915
Trade and Other Receivables	4	323,742	469,879
Inventories	5	31,732	33,549
TOTAL CURRENT ASSETS		7,591,677	4,034,343
NON-CURRENT ASSETS			
Other Receivables	4	647,740	632,982
Investments	16	3,550,574	2,897,640
Property, Plant and Equipment	6	35,447,077	37,969,065
Infrastructure	7	25,687,673	25,662,427
TOTAL NON-CURRENT ASSETS		65,333,064	67,162,114
TOTAL ASSETS		72,924,740	71,196,456
CURRENT LIABILITIES			
Trade and Other Payables	8	1,440,599	1,852,610
Long Term Borrowings	9	634,813	122,584
Provisions	10	1,162,738	1,205,365
TOTAL CURRENT LIABILITIES		3,238,151	3,180,559
NON-CURRENT LIABILITIES			
Long Term Borrowings	9	3,003,517	1,630,930
Provisions	10	120,714	124,390
TOTAL NON-CURRENT LIABILITIES		3,124,230	1,755,320
TOTAL LIABILITIES		6,362,381	4,935,879
NET ASSETS		66,562,358	66,260,578
EQUITY			
Retained Surplus		30,297,657	33,315,513
Reserves - Cash Backed	11	5,240,388	1,920,752
Reserves - Asset Revaluation	12	31,024,313	31,024,313
TOTAL EQUITY		66,562,358	66,260,578

Notes to the Financial Statements are included in the full Financial Statements contained in the Annual Report.

Statement of Changes in Equity

FOR THE YEAR ENDED 30TH JUNE 2012

	Note	Retained Surplus \$	Reserves Cash Backed \$	Asset Revaluation Reserve \$	Total Equity \$
Balance as at 1 July 2010		33,579,007	645,494	31,024,313	65,248,812
Net Result		1,011,764	—	—	1,011,764
Reserve Transfers		(1,275,258)	1,275,258	—	—
BALANCE AS AT 30 JUNE 2011		33,315,513	1,920,752	31,024,313	66,260,578
Net Result		301,780	—	—	301,780
Total Other Comprehensive Income		—	—	—	—
Reserve Transfers		(3,319,636)	3,319,636	—	—
BALANCE AS AT 30 JUNE 2012		30,297,657	5,240,388	31,024,313	66,562,358

Notes to the Financial Statements are included in the full Financial Statements contained in the Annual Report.

Statement of Cash Flows

FOR THE YEAR ENDED 30TH JUNE 2012

	Note	2012 \$	2012 Budget \$	2011 \$
CASH FLOWS FROM OPERATING ACTIVITIES				
RECEIPTS				
Rates		9,345,777	9,044,125	8,767,129
Operating Grants, Subsidies and Contributions		2,474,775	2,570,587	2,477,975
Fees and Charges		3,949,818	2,833,891	3,702,891
Interest Received		568,880	618,961	405,973
Goods and Services Tax Refund		491,229	–	373,473
Other Revenue		1,063,724	465,948	743,924
		17,894,203	15,533,513	16,471,365
PAYMENTS				
Employee Costs		(7,382,504)	(8,134,405)	(7,341,516)
Materials and Contracts		(6,852,412)	(4,962,933)	(5,390,873)
Utility Charges		(636,201)	(424,572)	(512,470)
Insurance Expenses		(461,279)	(355,787)	(503,152)
Interest Paid		(137,907)	(114,240)	(121,305)
Other Expenditure		(628,732)	(764,269)	(773,135)
		(16,099,035)	(14,756,206)	(14,642,451)
NET CASH PROVIDED BY (USED IN) OPERATING ACTIVITIES	13(b)	1,795,168	777,307	1,828,91
CASH FLOWS FROM INVESTING ACTIVITIES				
Payments for Purchase of Property, Plant & Equipment		(418,768)	(566,385)	(267,450)
Payments for Construction of Infrastructure		(1,328,359)	(1,684,918)	(1,457,183)
Non-Operating Grants, Subsidies and Contributions		439,437	577,338	493,579
Proceeds from Sale of Land, Plant & Equipment		2,059,949	2,047,500	1,229,653
NET CASH PROVIDED BY (USED IN) INVESTING ACTIVITIES		752,259	373,535	(1,401)
CASH FLOWS FROM FINANCING ACTIVITIES				
Repayment of Debentures		(245,182)	(122,585)	(114,771)
Payment to Trust Fund		(740,246)	–	–
Movement in Trust Fund		–	–	(834,377)
Proceeds from Self Supporting Loans		13,289	13,290	15,715
Proceeds from New Debentures		2,130,000	–	–
NET CASH PROVIDED BY (USED IN) FINANCING ACTIVITIES		1,157,861	(109,295)	(933,433)
Net Increase (Decrease) in Cash Held		3,705,288	1,041,547	894,080
Cash at Beginning of Year		3,530,915	3,897,443	2,636,836
CASH AND CASH EQUIVALENTS AT THE END OF THE YEAR	13(a)	7,236,203	4,938,989	3,530,915

Notes to the Financial Statements are included in the full Financial Statements contained in the Annual Report.

Rate Setting Statement

FOR THE YEAR ENDED 30TH JUNE 2012

	Note	2012 Actual \$	2012 Budget \$	2011 Actual \$
REVENUE				
Governance		51,858	45,040	74,888
General Purpose Funding		1,433,032	1,224,612	1,087,369
Law, Order, Public Safety		127,188	203,550	133,176
Health		1,381,317	1,399,110	1,007,516
Education and Welfare		3,303,681	3,171,345	3,027,505
Community Amenities		209,900	207,000	317,604
Recreation and Culture		965,934	1,275,391	830,590
Transport		263,067	308,397	491,224
Economic Services		144,625	198,771	198,738
Other Property and Services		108,886	63,514	120,182
		7,989,488	8,096,731	7,288,793
EXPENSES				
Governance		(684,742)	(717,477)	(759,650)
General Purpose Funding		(693,803)	(625,213)	(673,546)
Law, Order, Public Safety		(480,291)	(522,291)	(432,793)
Health		(2,156,430)	(1,819,956)	(1,964,015)
Education and Welfare		(3,602,140)	(3,560,777)	(3,199,730)
Community Amenities		(660,731)	(646,237)	(666,786)
Recreation and Culture		(5,192,441)	(5,204,701)	(4,681,630)
Transport		(2,972,683)	(2,962,925)	(2,719,449)
Economic Services		(1,157,224)	(441,739)	(411,314)
Other Property and Services		(110,291)	(377,825)	(123,235)
		(17,710,775)	(16,879,142)	(15,632,094)
		(9,721,287)	(8,782,411)	(8,343,301)
ADJUSTMENTS FOR CASH BUDGET REQUIREMENTS:				
NON-CASH EXPENDITURE AND REVENUE				
(Profit)/Loss on Asset Disposals	20	127,275	(211,151)	(116,365)
Movement in Deferred Pensioner Rates (Non-Current)		(28,047)	–	(38,503)
Movement in Employee Benefit Provisions (Non-Current)		(3,676)	–	79,189
Depreciation and Amortisation on Assets	2(a)	2,056,645	1,956,366	1,968,719
Employee Benefits Provisions Adjustment		(1,147,658)	–	–
CAPITAL EXPENDITURE AND REVENUE				
Purchase Land Held for Resale		–	–	–
Purchase Land and Buildings		(254,072)	(313,535)	(3,545)
Purchase Infrastructure Assets – Roads		(1,328,359)	(1,684,918)	(1,457,183)
Purchase Plant and Equipment		(164,696)	(195,500)	(212,393)
Purchase Furniture and Equipment		–	(57,350)	(51,512)
Ashfield Underground Power Project		–	(2,200,000)	–
Proceeds from Disposal of Assets	20	2,059,949	2,047,500	1,229,652
Repayment of Debentures	21(a)	(245,182)	(122,585)	(114,771)
Proceeds from New Debentures	21	2,130,000	2,200,000	–
Self-Supporting Loan Principal Income		13,289	13,290	15,716
Transfers to Reserves (Restricted Assets)	11	(3,552,894)	(2,201,000)	(1,360,258)
Transfers from Reserves (Restricted Assets)	11	233,258	220,445	85,000
Estimated Surplus/(Deficit) July 1 B/Fwd	22(b)	189,984	18,972	(396,254)
Estimated Surplus/(Deficit) June 30 C/Fwd	22(b)	(265,338)	12,247	189,984
AMOUNT REQUIRED TO BE RAISED FROM RATES	22(a)	(9,370,132)	(9,324,125)	(8,905,794)

Notes to the Financial Statements are included in the full Financial Statements contained in the Annual Report.



Arthritis Support Group
The Arthritis Support Group holds passive exercise. New members welcomed. Further enquiries: 9279 9382.

Bassendean Arts Community

Located 1 Surrey St, Bassendean

Fibrant Group – fibre and textile artisans.

All welcome – Thursday mornings.

Contact Joyce: 0423 185 263.

Web: www.bassendeanarts.com

Come and see the Fibrant 'Shoeing Off' Exhibition Oct/Nov in the Bassendean Library... a fun look at footwear.

Ashfield Sports Club

The ASC manages a team in the Football West All Flags State League Division One competition. To build on previous success the club offers more by fielding teams in the Ladies, Amateur and Junior leagues.

Players and assistance required at all levels.

Also the home for Ashfield ladies darts and Swan Districts Softball Clubs.

Interested in being part of the Ashfield SC family? Contact the club at ashfieldsc@iinet.net

Swan Districts Softball Club

Training Wed. evenings and fixture games on Sat.

Based at Ashfield Sports Club.

A great social club with a mind-set of giving back to players with low club fees and social events throughout the season.

Contact Michelle Morys on 0439 433 499 or michelle.morys@mosaiccc.org.

Bayswater Toy Library

New members welcome.

29 McKenzie Way, Embleton.

enquiry@bayswatertoylibrary.org.au or

visit our website www.bayswatertoylibrary.org.au or find us on Facebook.

Bassendean Wider Vision (Inc)

Over 50s group catering for those looking for something other than arts, crafts, sports, etc. Guest speaker each week followed by socialising over tea and biscuits.

Non-political, non-sectarian and non-profit making. Wed from 10.00 am to 12 noon.

New members welcomed.

Enquiries Doreen: 9296 8994 or Neville: 9275 1272.

Bassendean Walking for Pleasure Group

We meet each Monday morning 9.00 am in and around the Bassendean area. Also Monday and Wednesday 6.15 pm, and Saturday morning 8.00 am. We walk for approximately 1 hour.

Phone walk leaders Dawne and Bill Power on 9378 6006 or contact Town of Bassendean Recreation & Cultural Services on 9377 8000.

All very welcome.

Humpty Dumpty Toy Library

Borrow from a large variety of good quality toys, puzzles and games designed to support children's development and promote learning through play.

Altone Leisure Centre. Saturday 10 am–midday. 9377 6181 or humptydumptytoylib@gmail.com

Bassendean Senior Citizens and over 55s

50 Old Perth Road, Phone 9279 1944 Office Hours 10.00am–1.00pm Mon–Fri

Membership only \$12 per year.

Regular weekly activities plus Picnics, Afternoon Teas, Door Prizes and monthly Bus Trips, Events and Concerts.

We also have an Over-55's Dining Group which meets once a month.

For more information contact our office.

Bassendean Community Playgroup

Playgroup for children aged 0–6 years meets each Monday morning in the hall of St Mark's Church, off Parker Street, 10.00 am–12 noon.

Phone Tracy on 6278 2930.

New members welcome. See us on facebook at Bassendean Community Playgroup.

Basso Youth Groups

Fun games, activities and sharing each Friday night of the school term. Juniors (years 1 to 7) – 6.00 to 7.30 pm. Teenagers (year 7+) – 7.30 to 9.30 pm.

Bassendean Church of Christ, 4 Ivanhoe St

Living Smart Bassendean

Learn about living more sustainably and meet like-minded locals. Meet first Wednesday each month 7–9 pm meeting room at the Bassendean Library.

Contact Rebecca Benson

becbenson@hotmail.com 0404 399 893 or

Noala Degasperis ntj@iinet.net.au 0409 295 100

St Mark's Benefit Op Shop

St Mark's Anglican Church—new and second-hand clothing, bric-a-brac. Open 9.30 am–12 noon, Mon to Sat. Benefit Op Shop also open on Market Days with special cakes and preserves stall in Church Hall.

Helena River Jazz Band

Join the fun at our sessions in the Bassendean Community and Seniors Hall, Old Perth Road (two minutes from the station). Dance or simply relax and listen to the band in a warm and friendly atmosphere. Door prize. Refreshments available at only \$1 per cup.

Further enquiries—ring 9379 8071

Hope to see you there!

Lions Club of Bassendean (Inc).

Est. 1991, meets at the RSL Hall, Kenny Street, Bassendean 2nd and 4th Wed each month at 7 pm.

Phone Clive Brown 6278 2237

Men's Shed Project

Opportunities to volunteer for a local project, with carpentry, boilermaking, painting skills, etc. A few hours each week is all that's required.

Contact Project Coordinator, Ted Lawrence 9377 3987 or gypsyted@iinet.net.au

Sahaja Yoga Meditation

Freely available to anyone with a genuine desire to know the true self, with a quest to evolve to a higher level of awareness, understanding and enjoyment.

Tuesdays 7.00 pm–8.30 pm, Bassendean Library.

Contact Diana: 9279 7314 or email: selentin@westnet.net.au

Northern Saints Basketball Club

invites players from 7 to 17yrs to join one of our mixed teams. Altone rec centre in Beechboro, Saturdays and 1hr training during the week.

Phone Peter on 0417 974 179.

Woodbridge Fencing Club

at Alf Faulkner Hall, Mary St, Eden Hill. Practice a unique sport in a fun yet sporting environment. Catering to all levels, in all 3 weapons, from age 9 up—all gear provided. Training Thursdays 7.30–9.30pm during school terms.

For further info sms/call Jesse (President) 0438 528 887, or Wally (Treasurer) 0403 894 041.

Love to see you there!

Bassendean Primary School Playgroup

Sessions run Tuesday and Thursdays 9–10.30 am Room 15, Bassendean Primary School.

New members welcome.

Contact Tammy McEwan 0419 049 922

Swan Bassendean Weight Watchers

A member of Weight Watchers Federation Inc. WA. Meet at the RSL Hall, Kenny Street, Bassendean 6pm on Tuesday evenings and welcome new members. A low cost community based group promoting healthy eating and lifestyle with support and encouragement of others.

Pop in and say hello.

Tuesday Dance Group

Join in the fun Tuesdays at the Bassendean Community Hall from 11.00 am to 1.00 pm. Dancing to CD music you can experience Ballroom, Latin and New Vogue dance styles. A great way to exercise, meet people and practice your dancing.

Contact Lynne on 9377 5392.

Epiphytic Cacti & Hoya Society of Australia Inc.

Meetings held 3rd Sunday of the month (Jan–Nov) 1.30 pm–4 pm at Bassendean Community Hall, Old Perth Road.

Join like-minded gardeners and enjoy a social afternoon over refreshments after the meeting.

Contact Rex: 9342 7563 or Alf: 9444 6694.

Voices of the Valley Choir

welcome new members to a friendly, no auditions choir, conducted by enthusiastic professional musician.

Contact Dianne: 0407 145 580 or 9454 8181.



Bassendean Cricket Club

New members wanted.

Training: Jubilee Reserve **Eden Hill**, Tuesdays and Thursdays. **Contact Mick Ashe on 0403 427 677.**

Bassendean Historical Society (Inc)

Reconnect with your Community! We meet on the last Thursday of each month at 7.00 pm, at 1 Surrey Street. New members welcome.

Phone Lesley on 9279 9058 for more information.

Bassendean Caledonians Junior Soccer Club

Places available for Boys 14/15 and girls 15/16.

For more information phone Helen 0407 111 240 or Ken 0410 795 144.

St Mark's Badminton Group

Join this group of ladies for a morning of social badminton. 9.30 am–11.30 am Tuesday mornings, St Mark's Hall. **Contact Coral on 9279 3107**

Volunteers Centre

Volunteers are the heartbeat of the community. We help connect residents to volunteering in a wide range of activities. We are also here to help promote organisations and clubs to the community.

If you are looking to volunteer or for volunteers, please phone 9377 2191 and talk to Audrey or Colin.

Bassendean Tennis Club

invites the community to join in social play every Wednesday at 9.00 am, Friday at 7.00 pm and Sunday at 2.00 pm.

New members and visitors welcome.

Located at the Guildford Road end of Hamilton St.

Check the website for more details www.bassendeantennisclub.com or call Kathryn on 9377 1462.

SYRC—WA's Premier Youth Circus

New Circus Classes in Ashfield

Suitable for youth (8 years+) and adults. Learn trapeze, aerial silks, acrobatics, handstands and more!

Contact syrc.ltd@gmail.com for more details www.syrc.com.au

Community Weight Loss Challenge

8 week course, fun and support, \$\$ for Biggest Loser!

Call Anne-Kit on 0412 711 775

St Michael's Playgroup

0 – kindy, Parents, grandparents and carers welcome. Tues 9–11 am during school term. \$10/term + Playgroup WA 2012. Craft, shared fruit break, story time and much more. Bring a piece of fruit, water bottle and sun protection.

Part of the Community for over 25 years. Jennifer 0415 186 338

Casa Mia Montessori Playgroup

Fostering children's love of learning. Enrol now. Tue. and/or Wed. 9.15–11.15 am.

Email: bassendean.montessori.playgroup@gmail.com

Broadway II Band Afternoon Tea Dance

Join us for an afternoon of live music, dancing and companionship at the Bassendean Community Hall, Monday and Friday from 12.45 pm to 3.30 pm.

Public holidays included (except Good Friday). Admission \$5.00 per person. Ladies requested to bring a plate. Lucky Spots and Door Prizes awarded throughout the afternoon.

Contact Mrs Gwen Fenech on 9279 2756.

Bassendean Cultural Advancement Group

A spokesgroup for the Aboriginal Community in the Town of Bassendean.

Help us to work on issues affecting Aboriginal People in the Town: Culture – Health – Sport – Children – Education – Training – Employment.

New members welcomed. We can make a difference together.

Contact Lynette on 0421 560 047.

Ashfield Community Action Network

For coming events contact Lucy Bromell on 0402 257 965 or visit www.ashfieldcan.info

The AshfieldCAN supports positive community initiatives to improve or promote Ashfield as a great place to live.

We welcome anyone who would like to join us. **Neighbourhood Watch** in Ashfield meets at the Ashfield Sports Club.

For details contact: Verna Schreuders: 9279 3157

Bible Lessons for Kids

Join us on school term Sundays 9.30–10.30 am, Bassendean Community Hall for lessons, stories, songs and craft activities. Parents welcome—tea and coffee provided.

Enquiries Keren 6278 1910

Sponsored by Bassendean Christadelphians

Bassendean Bowling Club

Lunch is on at the Bassendean Bowling Club. Only \$12 per person including soup, roast and sweets. Every 2nd Friday. **All home cooked meals**, great atmosphere, drinks available.

For bookings phone the club after 3 pm on 9279 1949 or Fran on 9279 6365.

Community Bowls

Every 2nd Sunday of the month. Cost \$10.00 pp (includes lunch).

Phone 9279 1949 for more information.

Scrapbooking & Stamping Club of WA

Third Sunday of the month, 2.00–6.00 pm, Small Hall, Bassendean Council Offices, 48 Old Perth Road. Cost \$80 per annum or \$45 for 6 months or \$8 per month.

Contact Violet: 9295 5498 or Julie: 9378 3276.

Swan Districts Football Club

Function Room hire available at Steel Blue Oval, Old Perth Rd, Bassendean

For more info contact 9279 8700 www.swandistrictsfc.com.au

Bassendean Church of Christ Craft and Coffee Group

Crafts, morning tea and crèche provided. 9.00–11.30 am each Tuesday of school term.

Bassendean Church of Christ, 4 Ivanhoe St Enquiries: 9377 1620

Bassendean Al-Anon

Bassendean 'Hope For Today' on Sundays 6.00–7.30 pm at Bassendean Community Hall, 48 Old Perth Road (entry at rear). No charge.

For information and help phone 9325 7528 or www.al-anon.alateen.org/australia/wa.html

Bassendean Junior Cricket Club

Players welcome from 5–17.

Phone Kylie 0409 102 063 or email bassendeanjcc@gmail.com for details.

Bassendean Melody Club Inc.

Invitation

Join us to enjoy fellowship and singing along to the golden oldies. Venue: Bassendean Community Hall

Time: Fridays 10.00–11.45 am

(except Christmas break and Good Friday)

Cost: 50c or gold coin on 1st Friday of month.

Contact Helen Barber on 9299 6742.

Rotary Club of Swan Valley

welcomes new members interested in community service.

For information on Rotary or on our short-term Youth Exchange to New Zealand, contact Noel Allan on 9377 2277 or 0412 410 420.

Bassonovas Community Samba Drumming Group

Learn Brazilian percussion in a fun easy way—no experience necessary!

Call Bassendean Recreation & Cultural Services on 9377 8051 or check website: <http://sites.google.com/site/bassonovas/>

The Railway Museum Bassendean

Volunteers Wanted

It's fun! Could you help greet visitors to our museum? Sell tickets? Keep exhibits tidy?

Maintenance/handyman/gardening?

136 Railway Parade Bassendean. Phone 9279 7189. bookings@railheritagewa.org.au

For an opportunity to promote your organisation's activities.

Call us on 9377 8073 between 9.00 am–12.00 pm Monday to Thursday or leave a message with our Customer Service Centre on 9377 8000.

The close-off date for the next issue is 22 November 2012. Space is limited, so please keep text to a minimum.
To the best of our knowledge, information provided here is correct at the time of printing. You are advised to contact the relevant organisation/club direct for confirmation.