



## Local Government Structural Reform Our future – Your decision

**Response to the Robson Report of 2012  
and Request for Community Feedback · February 2013**

### Message from the Mayor

In June 2011, a review of the Perth metropolitan local government and broader governance structures was announced by the Minister for Local Government, the Hon John Castrilli MLA.

The Metropolitan Local Government Review Panel was appointed to examine the social, economic and environmental challenges facing metropolitan Perth. This independent Panel has been charged with recommending appropriate boundaries and governance models for local governments in the Perth metropolitan area.

The Panel provided its final report to the Minister in July 2012 and, in October 2012, the State Government released the Robson Report on the future of Local Government in the Perth metropolitan area. The report made numerous recommendations on the structure of local government in the metropolitan area as well as suggesting changes to the governance model currently in place for local government. A copy of the full report can be accessed via the following internet link: <http://metroreform.dlg.wa.gov.au/>. Hard copies of the executive summary of the final report are available in the Library.

### Bassendean's options

There are two options recommended by the Robson Report for the Town of Bassendean.

#### Option A

**Abolishing the current local government areas of Belmont, Bayswater and Bassendean and creating a new local government of Morley.**  
The population for this proposal totals 113,606 (as per the 2011 census).

#### Option B

**Abolishing the current local government areas of Belmont, Bayswater and Bassendean, as well as amending the boundaries of the City of Swan and the City of Stirling and creating a new local government of Morley.**  
The population for this proposal totals 160,789 (as per the 2011 census).

### Alternative proposals

Despite Options A and B, the Premier and the Minister for Local Government advised on 24 October 2012 that the Government would consider alternative proposals from local governments, and would not force amalgamation so long as local government in the metropolitan area could deliver a reduction to between 15 and 20 local governments—down from the current 30 that now exist.

The Town has had discussions with the City of Swan about the possibility of an amalgamation between Swan and Bassendean and what that might mean for the Town and the ability for the Bassendean community to maintain local service delivery and place management so that a significant say in local matters can be preserved.

The Town has not received a request for a meeting from the City of Bayswater and, given that City's previous record in not wishing to consult, such an approach is not expected.

A meeting was held with the City of Belmont on 24 January 2013 with an agreement being reached that both Councils would consider support for each other's submission prior to the submission going to the Minister.

The State Government requires submissions on the Robson Report to be lodged by 5 April 2013 following the State Election. It is, of course, possible that the current government may not regain power, and it is understood that the opposition does not support compulsory amalgamations.

To enable your Council to provide a response to the State Government we ask that you provide feedback to the Town on your preferences. It is appreciated that this has been done twice before in

the previous four years as part of the State Government's protracted local government reform process, and that both times this community has supported the Town staying as it is but perhaps with expanded borders. Whilst this is still an option for the community to pursue, the Town would like to know if there is an acceptable amalgamation proposal, to the community, in the event that the State determines that amalgamation will be legislated.

**Cr John Gangell,  
Mayor**

## Please indicate your responses to the following amalgamation proposals >>>

**Submissions can be made by completing the Feedback Form on page 5 and either emailing it back to [mail@bassendean.wa.gov.au](mailto:mail@bassendean.wa.gov.au) or posting it to Town of Bassendean, PO Box 87, Bassendean 6934.**

**Alternatively, you can drop your completed Feedback Form into the Customer Service Centre at 35 Old Perth Road or the Bassendean Memorial Library at 46 Old Perth Road, Bassendean.**

**The Feedback Form can also be completed online at [www.bassendean.wa.gov.au](http://www.bassendean.wa.gov.au).**

### PROPOSAL 1

## Business as usual

The Town advises the State Government that it wishes to remain independent, but wishes to pursue an expanded border, which is the Tonkin Highway, the centre line of Morley Drive, Bennett Brook and the Swan River. (This is the current adopted position of your Council.)

### Advantages

- The Town will retain its long history as a local government and as a community;
- Access to locally elected councillors will be retained;
- Existing services, celebrations and institutions will be retained;
- The Town's plans for the future can be defined and pursued;
- The Town's reserves will not be syphoned off for use in other suburbs of a larger local government;
- Existing border anomalies with Bayswater and Swan will be resolved with the proposed boundary adjustments;
- The current financial viability of the Town of Bassendean as a sustainable local government will be maintained;
- The Town of Bassendean assets will be enhanced as the management of its assets will be limited to the existing area;
- The 'local environment' will be maintained for the betterment of the Town of Bassendean;
- The Town of Bassendean's strategic plans and community engagement will continue to be a wealth of knowledge and understanding of the community's aspirations;
- The current Town Planning Scheme reviews and its increase in density will provide additional resources and funding for the whole community within the Town of Bassendean;
- As a member of the Eastern Metropolitan Regional Council the Town of Bassendean is involved in a range of shared projects which benefit the whole region; and
- With the border adjustment proposed all of Ashfield would be in the Town of Bassendean as would the CSBP site and some surrounding businesses, and all of the houses currently in the City of Bayswater on the Town's side of the Tonkin Highway.

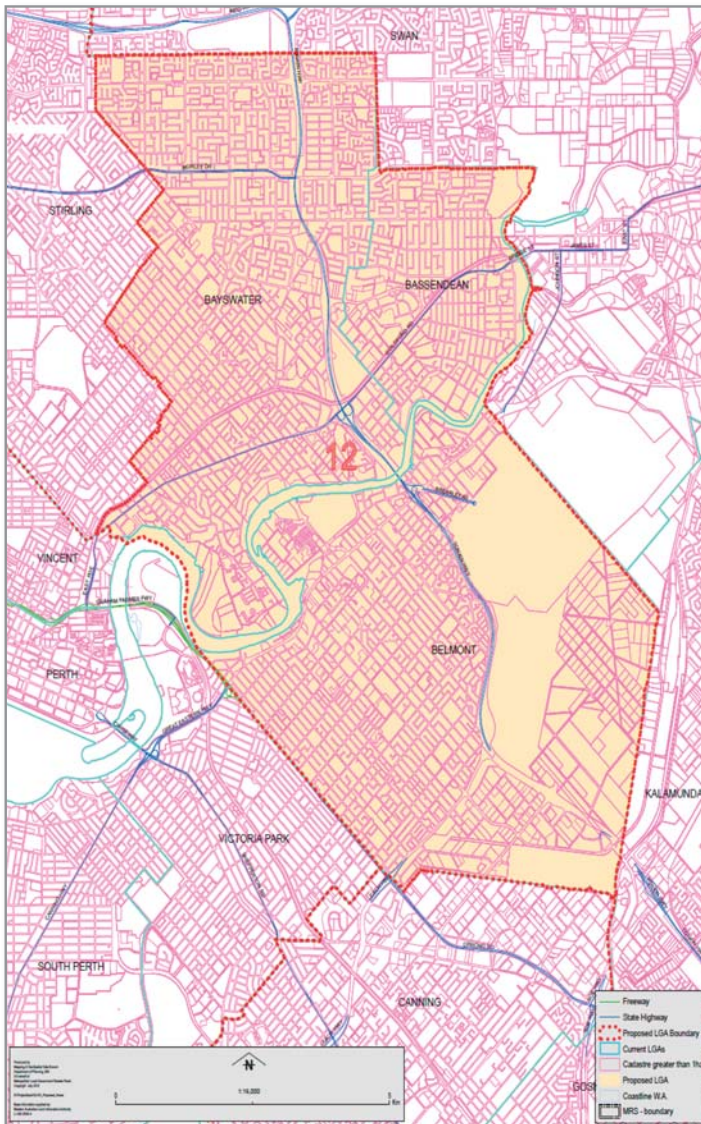
### Disadvantages

- The existing boundaries do not provide for a regional approach for population and development growth for the region;
- There are limitations for the Town of Bassendean to develop assets that cross local government boundaries;
- There are perceived disadvantages in maintaining the existing structure given the future development of the region;
- The possibility of not being able to receive funding for projects specifically for the Town of Bassendean in the future as higher levels of government focus on regional and larger local governments to deliver services;
- With the border adjustments proposed a small number of properties on the northern side of Morley Drive would be lost to the City of Swan; and
- The Town's budget does not have the capacity to increase significantly for the foreseeable future until significant growth and development occurs.

# Amalgamation of the City of Belmont, the City of Bayswater and the Town of Bassendean (as per Option A)

The following map shows the proposed new boundaries of the new local government.

Map of Morley – Option A



## Advantages

The Metropolitan Review Report suggests the following advantages for this proposal:

- The proposed new local government is focussed on the strategic activity centre of Morley and is essentially a consolidation of the current local governments of Bassendean, Bayswater and Belmont within their current boundaries. This local government would span both sides of the Swan River and adjoin the City of Perth at its southern boundary.
- The population of the proposed new local government focused on Morley is estimated at around 113,606, growing only slightly to a projected 125,100 by 2026. Population growth in this area will largely come through infill of existing suburbs.
- With the further development of the airport precinct, transport links through the area, such as the Tonkin Highway, are critical. All of the Perth Airport is brought into this proposed new local government. This is an improvement on the current situation, which sees it spread across three local governments.
- The residential areas being brought together are similar in housing stock and socio-economic status.

An important aspect of this proposed local government is making the Swan River a central feature, providing the basis for pooled expertise and a consistent approach to management of associated issues.

## Disadvantages

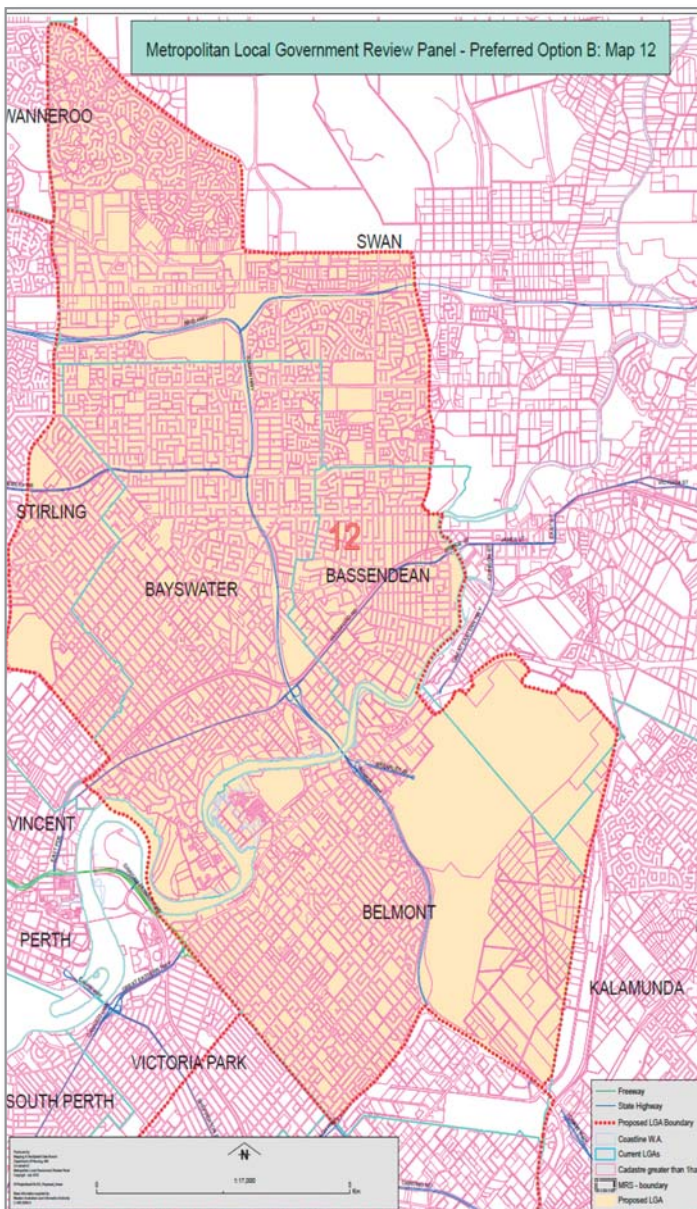
- The Town of Bassendean as a long-standing local government with a strong history and connection to its community will be abolished;
- A possible reduction in the service provision to the Town of Bassendean residents particularly in relation to home and community care and children's services;
- The possibility of a reduction in Library services for Town of Bassendean residents;
- The possibility of a reduction in the provision of recreational facilities and events that have been advantageous to the Town of Bassendean;
- The possibility of a reduction in the elected member representation for the Town of Bassendean; and
- A possible strong sense of disconnectedness for residents when dealing with a much larger Local Government with a much broader focus.

# Amalgamation of the City of Belmont, the City of Bayswater and the Town of Bassendean plus part of Swan and Stirling

(as per Option B)

The following map shows the proposed new boundaries of the new local government.

Map of Morley – Option B



## Advantages

The Metropolitan Review Report suggests the following advantages for this proposal:

- The proposed new local government focussed on the strategic activity centre of Morley is essentially a consolidation of the current local governments of Bassendean, Bayswater and Belmont. This local government would span both sides of the Swan River and adjoin the City of Perth at its southern boundary. It is also proposed that selected areas from the south-eastern segment of the City of Swan (Ballajura, Beechboro, Kiara, Lockridge and Malaga) be attached to this local government, on the basis that the areas involved are closer to, and more connected to, the commercial centre of Morley rather than Midland.
- The population of the proposed new local government focused on Morley is estimated at around 171,000, growing only slightly to a projected 186,000 by 2026. Population growth in this area will largely come through infill of existing suburbs.
- With the combination of industrial areas at Belmont and Malaga, and the Morley retail centre, this will be a financially strong local government. With the further development of the airport precinct, transport links through the area, such as the Tonkin Highway, are critical. All of the Perth Airport is brought into this proposed new local government this is an improvement on the current situation, which sees it spread across three local governments.
- The residential areas being brought together are similar in housing stock and socio-economic status.

An important aspect of this proposed local government is making the Swan River a central feature, providing the basis for pooled expertise and a consistent approach to management of associated issues.

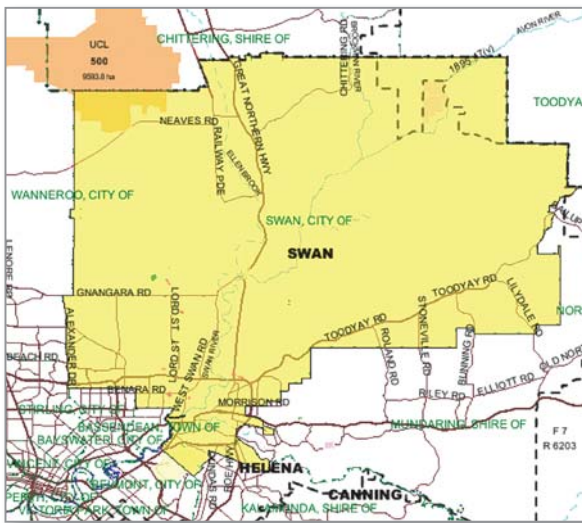
## Disadvantages

- The Town of Bassendean as a long-standing local government with a strong history and connection to its community will be abolished;
- A possible reduction in the service provision to the Town of Bassendean residents particularly in relation to home and community care and children’s services;
- The possibility of a reduction in Library services for Town of Bassendean residents;
- The possibility of a reduction in the provision of recreational facilities and events that have been advantageous to the Town of Bassendean;
- The possibility of a reduction in the elected member representation for the Town of Bassendean; and
- A possible strong sense of disconnectedness for residents when dealing with a much larger Local Government with a much broader focus.

# Amalgamation of the Town of Bassendean with the City of Swan

The Town of Bassendean has held discussions with the City of Swan on the possibility of amending the boundary and including the Town of Bassendean within the City of Swan.

**Map of City of Swan and Town of Bassendean**



## Advantages

- The City of Swan has indicated that it will provide ‘place management’ for Bassendean, allowing a degree of local decision-making;
- Swan has also suggested that local services delivery will be maintained in Bassendean;
- There is a strong historical attachment with Guildford;
- There would be an increased financial capacity in the larger Local Government;
- A new ward centred on Bassendean has been suggested, possibly also taking in Kiara and Beechboro; and
- Representation in the new ward would provide for ‘local’ councillors to represent residents.

## Disadvantages

- The Town of Bassendean as a long-standing local government with a strong history and connection to its community will be abolished;
- The possibility of not funding projects specifically for the Town of Bassendean;
- A possible reduction in the service provision to the Town of Bassendean residents particularly in relation to home and community care and children’s services;
- The possibility of a reduction in Library services for Town of Bassendean residents;
- The possibility of a reduction in the provision of recreational facilities and events that have been advantageous to the Town of Bassendean; and
- Councillors representing Bassendean residents will also represent residents outside the current Town, and be part of a much larger Council body with a corresponding reduction in influence.



# Feedback form: please indicate your preference

You can also complete the Feedback Form online at [www.bassendean.wa.gov.au](http://www.bassendean.wa.gov.au).

**Q1. Which of the following options is the most appropriate for Bassendean? Please circle (a), (b), (c), (d) or (e).**

- (a) Proposal 1 – Business as usual (status quo).
- (b) Proposal 2 (Option A) – Belmont, Bassendean and Bayswater.
- (c) Proposal 3 (Option B) – Belmont, Bassendean, Bayswater with portions of Stirling and Swan.
- (d) Proposal 4 – Town of Bassendean and City of Swan.
- (e) None of the above.

**Q2. If you circled (a) in Question 1, and the government decides to legislate the amalgamation of local governments, which of the following options would be a suitable alternative? Please circle (a), (b) or (c).**

- (a) Proposal 2 (Option A) – Belmont, Bassendean and Bayswater.
- (b) Proposal 3 (Option B) – Belmont, Bassendean, Bayswater with portions of Stirling and Swan.
- (c) Proposal 4 – Town of Bassendean and City of Swan.

**Optional:** Name: ..... Address: .....

As well as being part of this survey, and thence the Town’s submission, you may also lodge your own comments on the Department of Local Government’s website at <http://metroreform.dlg.wa.gov.au>

**Thank you for your response.**

**Responses will be accepted until 8 March 2013 and the results will be included in the agenda for the March 2013 Council Meeting.**

bankwest 

# MOVIES BY BASSENDEAN

## continue at the BIC Reserve

Outdoor movies continue at the BIC Reserve until 31 March 2013.

Movies will be shown from Wednesday to Sunday each week, with some exceptions for public holidays. The BIC Reserve is on the corner of Guildford Road and Wilson Street, Bassendean, behind the Bassendean Memorial Library.

For online bookings or program updates go to [www.moviesbyburswood.com](http://www.moviesbyburswood.com).

Gates open at 6.30 pm; films start at 7.45 pm. For general enquiries phone 0403 560 684.

## Program

### February

Wednesday 20	Quartet (M) <i>No Free Passes</i>
Thursday 21	Les Miserables (M)
Friday 22	The Hobbit: An Unexpected Journey (M)
Saturday 23	Jack Reacher (M) <i>No Free Passes</i>
Sunday 24	Here Comes The Boom (M)
Wednesday 27	Private Screening
Thursday 28	Gangster Squad (MA15+)

### March

Friday 1	Life Of Pi (PG)
Saturday 2	Les Miserables (M)
Sunday 3	Wreck-It Ralph (PG)
Wednesday 6	The Hobbit: An Unexpected Journey (M)
Thursday 7	Skyfall (M)
Friday 8	Paranorman (PG)
Saturday 9	Guilt Trip (M) <i>No Free Passes</i>
Sunday 10	Pitch Perfect (M)

Wednesday 13	Parental Guidance (PG)
Thursday 14	This is 40 (MA15+)
Friday 15	Silver Linings Playbook (M)
Saturday 16	The Impossible (M)
Sunday 17	Save Your Legs (M)
Wednesday 20	Zero Dark Thirty (M)
Thursday 21	Guilt Trip (M) <i>No Free Passes</i>
Friday 22	Flight (M) <i>No Free Passes</i>
Saturday 23	Lincoln (M)
Sunday 24	Les Miserables (M)
Wednesday 27	Flight (M) <i>No Free Passes</i>
Thursday 28	Beautiful Creatures (TBA)
Friday 29	Good Friday Holiday: Silver Linings Playbook (M)
Saturday 30	Safe Haven (TBA)
Sunday 31	The Impossible (M)

*No Free Passes* = Complimentary tickets not valid at these screenings.

# Town of Bassendean 2013 Short Story Awards

Following on from the 2012 National Year of Reading, the Bassendean Memorial Library is holding a short story writing competition. This is a great opportunity to create or record a story about yourself, your life, your home, or your community.

Entry forms—with all the details you need—are available from the Library. Your entry must be submitted to the Library before 6.00 pm on Friday 31 May 2013.

The Award Categories are: \$700 for Judges' First Choice; \$500 for Judges' Second Choice; and \$200 for Judges' Junior Choice (for ages 8–17 years). The stories will be judged by a panel of writers, librarians and Bassendean dignitaries. Winners will be notified and the presentation for the successful entrants will be held on Bassendean Day, Friday 12 July 2013.

**Conditions:**  
Only one entry per individual; the story must be your own original work; and you must be a resident of the Town of Bassendean. Your short story can be as short as you like but no longer than 3000 words and submitted printed on A4 paper.

## Premier's Australia Day Active Citizenship Awards 2013

Two awards were presented at the Premier's Australia Day Active Citizenship Awards.

The first award, for outstanding community contribution by a local citizen, went to Yvonne Isherwood. Yvonne (pictured below left) has given more than 20 years of service as a volunteer with the Seniors, volunteering in the Podiatry Service, and is a long serving member of the Committee of the Bassendean Senior

Citizens' Association. She was instrumental in mentoring many new committee members to ensure the development of the Association to the strong organisation it is today.

The second category, for outstanding community contribution by a local group or community event, was awarded to the Melody Club. Formed in 1991 and still going strongly today, the club was originally formed as a birthday card club. Gwen Fenech was the Welfare Officer for the Town of Bassendean at the time and people who didn't have any family

received a card on their birthday written by a group of volunteers. It was these volunteers who decided to have a sing-along and that is how the club was formed.

The Club meets on a Friday in the Bassendean Community Hall and continues to regularly attract an audience of around 70–80 people. The Club is well-regarded on a regional basis and attracts many people from outside of the Town. The award was accepted on behalf of the Club by the President, Peg Bowra, and Moira Wilson (pictured below right).



# Create your own unique Easter Ears!

If you are game to wear them to the  
Easter Old Perth Road Markets  
on Sunday 24th March between 8.30 am–1.30 pm  
you could win one of the spot prizes  
which will be awarded to *amazing ears!*



Rotary Club of Swan Valley

You can contact these people for more information:

'MarketEars' Christine 0428 411 801

'Floppy Library Ears' Jill 9279 2966

'Dog Ears' William 0409 188 377

**Bassendean  
Memorial Library**  
is a great place to make  
Easter Ears with a box of  
interesting crafty things, and lots  
of activity books to inspire you.

46 Old Perth Road  
[www.bassendean.wa.gov.au/  
library](http://www.bassendean.wa.gov.au/library)

Proudly sponsored by:  
The Woolie Wolf Dog Grooming Studio  
Bassendean Book Exchange  
Pharmacy 51  
Café Basso  
Tomorrow's Memories





## Coming up at the Markets...

### Support your Swans **Sunday 28 April**

**AFTER SIX** months of winter training, and reaching the finals last year, the Swans are coming out fighting this season with the finals trophy firmly in their sights! You will have the opportunity to meet some of the players, mid-season, when they visit the markets on Sunday 28 April.

Stars from the Swan Districts Football Club will be making a special guest appearance to speak about their most enjoyable games and sign some autographs. The season will have only completed seven rounds and so there will still be much left to play for.

We will have a few balls to kick around and the players will be there to give all the encouragement to those young hopefuls eager to one day make the grade and play for this celebrated team.



### Plants for Residents and your garden

**Sunday 23 June**

**TEAMING UP** with the really popular 'Plants to Residents' scheme again, the markets will feature lots to do with gardening and all things that grow! This scheme offers a range of local native trees, shrubs and wildflowers which are well adapted to the local soil and climate conditions and require little maintenance. Once established they increase local biodiversity, provide food and attract birds and butterflies.

But what about the other needs for your garden? If you want herbs, need tools or maybe some fun decorations, there will be stalls to provide them. There will be seed suppliers, and plant holders, and some really good local advice on how to improve your soil and maybe increase the yield from your vegies and fruit trees. Experts will be on hand to answer lots of questions and offer suggestions on how to look after the seedlings until they become established.

### Vintage Cars Display **Sunday 28 July**

**GET THE** whiff of the petrol, the bouquet of polish, and the gleam of the varnish! The Vintage Car Club of WA, home to 200+ vintage and veteran car fanatics and enthusiasts, will join us to display a few of their trophies. We will clear all the room they need to give these wonderful machines pride of place. You'll be able to get up close and learn the history of the vehicles, talk to the owners and perhaps let some of their enthusiasm rub off on you!

## Stallholder profile

### Pedal Sport N Toys

**AT THE** markets we love a good yarn, and we're always intrigued about the story behind our stallholders. When we asked Peter at Pedal Sport N Toys "How did you get into this Peter?" this is what he told us:

"For the last twenty-five years I have owned and operated an Earthmoving and General Civil business in the southwest. About four and a half years ago after buying a high quality, Dutch-made adult-sized pedal kart over the internet as a means to get some exercise, I couldn't get near it as others always wanted to have a go. This produced the flash of brilliance that is now Pedals Sport N Toys.

I made the pitch to my long-suffering business partners to stump up the money and in May 2008 we ordered our stock. Our focus was on healthy, clean, green fun for all ages. With all the new 'wiz bang' electronic gadgets and electric pedal cars now available I thought it may have been only people of my generation that got the program. But to my amazement kids are universal and timeless. Once you can convince the parents it is not just like "the push bike they have at home and never use" and they have a go, they just keep on coming back. Each time we return to a regular venue with the kart track, familiar faces beam back at you with impending excitement and anticipation of jousting once again with their friends or siblings—sometimes we even con a parent or two to have a go.

"For us the sound of young people having good, clean, healthy fun is very rewarding, not to mention the added bonus of watching them grow in confidence and ability with each visit. It is very safe because the riders can only achieve the speeds their own ability provides and the hustle-bustle of the crowded track tests out the tolerance and consideration of all.

Pedals Sport N Toys will probably never make a profit, but money isn't everything and lately we have diversified into providing specialised people-powered appliances for those with a disability and this is also very rewarding. The operation has become a stress relief valve for us and it is always nice to bring some fun simple thing to the public."

Thank you Peter. All the stallholders have a story to tell, and you can meet them when you next come down to the markets!



For more details and regular updates visit [www.oldperthmarkets.com.au](http://www.oldperthmarkets.com.au) or our facebook page.





## Permitted Pieces

**BASSENDEAN** Youth Services completed Stage 2 of the 1 Anzac Terrace urban art mural project dubbed 'Permitted Pieces' on 2 December 2012. The project was a huge success with 15 local volunteer artists combining to paint a mural around 60 metres long adjacent to the railway line.

This site has been a vandalism hotspot in recent years. Bassendean Youth Services initiated a project which aims to replace illegal graffiti with authorised art pieces. Once completed, the mural will be a positive advertisement for the legitimacy of legal urban art and a less attractive location for graffiti vandalism.

Residents of the adjacent strata group provided very positive feedback and are excited about the prospect of further urban art projects at the site. The murals are coated with a non-sacrificial anti-graffiti coating which will allow preservation of the original artworks.

The artists involved were keen to demonstrate the difference between their art pieces and graffiti vandalism. On the basis of the project's success, the Town of Bassendean has applied for grant funding to remove graffiti vandalism and complete the urban art mural.

## Foolish April Library book sale!

**ONCE AGAIN**, the Library is offering discarded and unwanted print and electronic items for sale. The material is varied in its quality and range. We have books, magazines, paperbacks, jigsaws, DVDs and encyclopaedia sets for sale—and all at give-away prices!

This is an opportunity to give an item a new home. The prices are so foolish we have decided not to embarrass April! The book sale will be held in the Library foyer each day from Monday 25 March to Thursday 28 March from 10.00 am to 2.30 pm.

**Drop into the Library in the week prior to Easter to grab a bargain!**

## Electronic waste (E-waste) collections

### Do you have an old TV or a computer you wish to dispose of?

The Town of Bassendean, in conjunction with the Eastern Metropolitan Regional Council, will be holding the following electronic waste drop-off days where residents can bring these items to the Bassendean Council Depot for disposal free of charge. These items will be taken to the Red Hill Waste Management Facility for recycling, diverting them from landfill, reducing dumping and recovering valuable resources.

**Where:** Town of Bassendean Council Depot, 69 Scaddan St (near corner of Troy St), Bassendean.

**When:** 8:30 am to 1:30 pm on Saturday 23 February, Saturday 23 March and Saturday 20 April.

**E-waste that will be accepted:** Computers/laptops, printers, scanners, monitors, mice, keyboards, cables, drives and related computer peripherals, and all TVs (CRTs, plasma, LCD, LED and projection televisions). **Please note: The Town of Bassendean will only accept the e-waste items listed above—no other goods will be accepted.** (No mobile phones, game consoles, video recorders, DVD blue ray players, radios/stereos or other electrical items.)

**Conditions:** Residents must provide proof of residency (e.g. a rates notice or current driver's licence). Residents must remove and place any items in the recycling bins as directed; no site help will be available for unloading of vehicles or transporting of items. Limit of five TVs: residents with more than five TVs can dispose of these at Red Hill Waste Management Facility at no charge.

## Council Calendar

<b>TUESDAY 26 FEBRUARY</b> Ordinary Council Meeting	7.00 pm
<b>THURSDAY 28 FEBRUARY</b> Youth Advisory Council Meeting	5.00 pm
<b>WEDNESDAY 6 MARCH</b> Access & Inclusion Committee Meeting	10.00 am
<b>WEDNESDAY 6 MARCH</b> Cultural Development Advisory Committee Meeting	6.00 pm
<b>WEDNESDAY 13 MARCH</b> Economic Development Advisory Committee Meeting	5.30pm
<b>THURSDAY 14 MARCH</b> Seniors' Week Coordinating Committee Meeting	12.30 pm
<b>TUESDAY 26 MARCH</b> Ordinary Council Meeting	7.00 pm
<b>THURSDAY 28 MARCH</b> Youth Advisory Council Meeting	5.00 pm
<b>FRIDAY 29 MARCH</b> Good Friday	Offices closed
<b>MONDAY 1 APRIL</b> Easter Monday	Offices closed
<b>THURSDAY 4 APRIL</b> Local Studies Collection Management Committee Meeting	9.30 am
<b>WEDNESDAY 10 APRIL</b> Children & Family Services Committee Meeting	7.00 pm
<b>THURSDAY 18 APRIL</b> Youth Advisory Council Meeting	5.00 pm

### Justice of the Peace office

The Town of Bassendean provides a Justice of the Peace document witnessing centre at the Bassendean Memorial Library at 46 Old Perth Road, Bassendean on Wednesdays from 10.00 am to 12 noon. A Justice of the Peace can witness official documents, administer an oath or affirmation, and take an affidavit.

'recognising our past  
celebrating the now  
creating the future'

### Town of Bassendean

48 Old Perth Road, Bassendean WA 6054

PO Box 87, Bassendean WA 6934

T: 9377 8000 F: 9279 4257

E: [mail@bassendean.wa.gov.au](mailto:mail@bassendean.wa.gov.au)

[www.bassendean.wa.gov.au](http://www.bassendean.wa.gov.au)

Advancing Perth's Eastern Region



## Bassendean Arts Community

Located 1 Surrey St, Bassendean

Fibrant Group – fibre and textile artisans.

All welcome – Thursday mornings.

Contact Joyce: 0423 185 263.

Web: [www.bassendeanarts.com](http://www.bassendeanarts.com)

New members welcome.

Look out for exciting projects in 2013.

## Bassendean Senior Citizens and over 55s

50 Old Perth Road, Phone 9279 1944

Office Hours 10.00am–1.00pm Mon–Fri

Membership only \$12 per year.

Regular weekly activities plus Picnics, Afternoon Teas, Door Prizes and monthly Bus Trips, Events and Concerts.

We also have an Over-55's Dining Group which meets once a month.

For more information contact our office.

## Ashfield Sports Club

The ASC manages a team in the Football West All Flags State League Division One competition. To build on previous success the club offers more by fielding teams in the Ladies, Amateur and Junior leagues.

Players and assistance required at all levels.

Also the home for Ashfield ladies darts and Swan Districts Softball Clubs.

Interested in being part of the Ashfield SC family?

Contact the club at [ashfieldsc@iinet.net](mailto:ashfieldsc@iinet.net)

## Bassendean Community Playgroup

Playgroup for children aged 0–6 years meets each Monday 9.30–11.30 am in the hall of St Mark's Church, off Parker Street,  
Phone Lisa Gemell on 0402 533 517.

New members welcome. See us on facebook at Bassendean Community Playgroup.

## Northern Saints Basketball Club

invites players from 7 to 17yrs to join one of our mixed teams. Altone rec centre in Beechboro, Saturdays and 1hr training during the week.

Phone Peter on 0417 974 179.

## Living Smart Bassendean

Learn about living more sustainably and meet like-minded locals. Meet first Wednesday each month 7–9 pm meeting room at the Bassendean Library.

Contact Rebecca Benson

[becbenson@hotmail.com](mailto:becbenson@hotmail.com) 0404 399 893 or

[Noala.Degasperis.ntj@iinet.net.au](mailto:Noala.Degasperis.ntj@iinet.net.au) 0409 295 100

## Tuesday Dance Group

Join in the fun Tuesdays at the Bassendean Community Hall from 11.00 am to 1.00 pm. Dancing to CD music you can experience Ballroom, Latin and New Vogue dance styles. A great way to exercise, meet people and practice your dancing.

Contact Lynne on 9377 5392.

## Swan Districts Softball Club

Training Wed. evenings and fixture games on Sat.

Based at Ashfield Sports Club.

A great social club with a mind-set of giving back to players with low club fees and social events throughout the season.

Contact Michelle Morys on 0439 433 499 or [michelle.morys@mosaiccc.org](mailto:michelle.morys@mosaiccc.org)

## Play Football on Saturdays

Register with Perth Strikers CFC and play in the WACFA Football West football (soccer) competition.

We train and play at Ashfield Reserve, Ashfield

All enquiries please contact Kirsten on 0434 334 341 or André on 0418 314 721  
Email: [strikers.cfc@optusnet.com.au](mailto:strikers.cfc@optusnet.com.au)

## Woodbridge Fencing Club

at Alf Faulkner Hall, Mary St, Eden Hill. Practice a unique sport in a fun yet sporting environment. Catering to all levels, in all 3 weapons, from age 9 up—all gear provided. Training Thursdays 7.30–9.30pm during school terms.

For further info sms/call Jesse 0438 528 887, or Simon 0419 922 385.

Love to see you there!

## Bayswater Toy Library

Now located at large, child-friendly premises in Embleton. Over 1000 toys available to borrow.

New members welcome!

Ph: 0412 235 803 or visit

[www.bayswatertoylibrary.org.au](http://www.bayswatertoylibrary.org.au)

## Bassendean Historical Society (Inc)

Reconnect with your Community! We meet on the last Thursday of each month at 7.00 pm, at 1 Surrey Street. New members welcome.

Phone Lesley on 9279 9058 for more information.

## Helena River Jazz Band

First Sunday of each month 2–4.30 pm at the Community Hall, Old Perth Road.

\$10 admission – Door Prize – Tea and Coffee available. Dance or simply listen to the band in a friendly atmosphere.

Enquiries—Vivienne 9379 8071

Hope to see you there!

## Bassendean Bowling Club

Community Bowls

Every 2nd Sunday of the month.

Cost \$10.00 pp (includes lunch).

Phone 9279 1949 for more information.

## Bassendean Walking for Pleasure Group

We meet each Monday morning 9.00 am in and around the Bassendean area. Also Monday and Wednesday 6.15 pm, and Saturday morning 8.00 am. We walk for approximately 1 hour.

Phone walk leaders Dawne and Bill Power on 9378 6006 or contact Town of Bassendean Recreation & Cultural Services on 9377 8000.

All very welcome.

## Swan Bassendean Weight Watchers

A member of Weight Watchers Federation Inc. WA. Meet at the RSL Hall, Kenny Street, Bassendean 6pm on Tuesday evenings and welcome new members. A low cost community based group promoting healthy eating and lifestyle with support and encouragement of others.

Pop in and say hello.

## Epiphytic Cacti & Hoya Society of Australia Inc.

Meetings held 3rd Sunday of the month (Jan–Nov) 1.30 pm–4 pm at Bassendean Community Hall, Old Perth Road.

Join like-minded gardeners and enjoy a social afternoon over refreshments after the meeting.

Contact Rex: 9342 7563 or Alf: 9444 6694.

## Humpty Dumpty Toy Library

Borrow from a large variety of good quality toys, puzzles and games designed to support children's development and promote learning through play.

Altone Leisure Centre. Saturday 10 am–midday. 9377 6181 or [humptydumptytoylib@gmail.com](mailto:humptydumptytoylib@gmail.com)

## Sahaja Yoga Meditation

Freely available to anyone with a genuine desire to know the true self, with a quest to evolve to a higher level of awareness, understanding and enjoyment.

Tuesdays 7.00 pm–8.30 pm, Bassendean Library.

Contact Diana: 9279 7314 or email: [selentin@westnet.net.au](mailto:selentin@westnet.net.au)

## Bassendean Preservation Group

We're propagating and planting out habitat for the endangered iconic Carnaby's Black Cockatoos.

Join us!

For more info email: [skipmcpfarlap@bigpond.com](mailto:skipmcpfarlap@bigpond.com) or visit our website: <http://www.bpginc.info/>



## Basso Youth Groups

Games, activities and sharing each Friday night of the school term. Juniors (years 1 to 7) 6.00 to 7.30 pm. Teenagers (year 7+) 7.30 to 9.30 pm.

Bassendean Church of Christ,  
9377 1620

### Bassendean Cricket Club

**New members wanted.**

Training: Jubilee Reserve **Eden Hill**, Tuesdays and Thursdays. **Contact Mick Ashe on 0403 427 677.**

### Bassendean Wider Vision (Inc)

Over 50s group catering for those looking for something other than arts, crafts, sports, etc. Guest speaker each week followed by socialising over tea and biscuits.

Non-political, non-sectarian and non-profit making. Wed from 10.00 am to 12 noon.

**New members welcomed.**

**Enquiries Doreen: 9296 8994 or Neville: 9275 1272.**

### Bassendean Caledonians Junior Soccer Club

Come and join 'The Callies' one hundred years celebration. Boys and Girls from 5yrs to 18yrs.

**To find out more contact Ken 0410 795 144.**

### St Mark's Badminton Group

Join this group of ladies for a morning of social badminton. 9.30 am–11.30 am Tuesday mornings, St Mark's Hall. **Contact Coral on 9279 3107**

### Bible Lessons for Kids

Join us on school term Sundays 9.30–10.30am, Bassendean Community Hall for lessons, stories, songs and craft activities. Parents welcome—tea and coffee provided.

**Enquiries Keren 6278 1910**

Sponsored by Bassendean Christadelphians

### Lions Club of Bassendean (Inc).

Est. 1991, meets at the RSL Hall, Kenny Street, Bassendean 2nd and 4th Wed each month at 7 pm.

**Phone Clive Brown 6278 2237**

### Men's Shed Project

Opportunities to volunteer for a local project, with carpentry, boilermaking, painting skills, etc. A few hours each week is all that's required.

**Contact Project Coordinator, Ted Lawrence 9377 3987 or gypsyted@inet.net.au**

### Kinetica Circus Arts

Beginner's circus classes for youth and adults in the Cyril Jackson Recreation Centre. Learn aerial silks, trapeze, acrobatics and more!

**Contact kinetica.cdt@gmail.com for more details.**

### Broadway II Band Afternoon Tea Dance

Join us for an afternoon of live music, dancing and companionship at the Bassendean Community Hall, Monday and Friday from 12.45 pm to 3.30 pm.

Public holidays included (except Good Friday). Admission \$5.00 per person. Ladies requested to bring a plate. Lucky Spots and Door Prizes awarded throughout the afternoon.

**Contact Mrs Gwen Fenech on 9279 2756.**

### Bassendean Church of Christ Craft and Coffee Group

Crafts, morning tea and crèche provided. 9.00–11.30 am each Tuesday of school term.

**Bassendean Church of Christ, 4 Ivanhoe St Enquiries: 9377 1620**

### Anzac Terrace Primary School Playgroup

Join the fun at Playgroup Monday mornings 9–11am during school terms. Play, activities, stories, craft, music...

**New members welcome.**

**Contact Keren 6278 1910 or Kristy 0408 454 660**

### Scrapbooking & Stamping Club of WA

Third Sunday of the month, 2.00–6.00 pm, Small Hall, Bassendean Council Offices, 48 Old Perth Road. Cost \$100 per year or \$55 for six months or \$10 per month.

**Contact Violet: 9295 5498 or Julie: 9378 3276.**

### Bassendean Tennis Club

invites the community to join in social play every Wednesday at 9.00 am, Friday at 7.00 pm and Sunday at 2.00 pm.

**New members and visitors welcome.**

Located at the Guildford Road end of Hamilton St.

**Check the website for more details**

**[www.bassendeantennisclub.com](http://www.bassendeantennisclub.com) or call Kathryn on 9377 1462.**

### St Michael's Playgroup

0 – kindy, Parents, grandparents and carers welcome. Tues 9–11 am during school term. \$10/term + Playgroup WA 2012. Craft, shared fruit break, story time and much more. Bring a piece of fruit, water bottle and sun protection.

**Part of the Community for over 25 years.**

**Jennifer 0415 186 338**

### Casa Mia Montessori Playgroup

Fostering children's love of learning. Enrol now, Tue 9–10 am (12–24 months) or Tue 10 am–12 pm and Wed 9.15–11.15 am (18 months and older).

**Email: [casamia.playgroup@yahoo.com](mailto:casamia.playgroup@yahoo.com)**

### Bassendean Primary School Playgroup

Sessions run Tuesday and Thursdays 9–10.30 am Room 15, Bassendean Primary School.

**New members welcome.**

**Contact Tammy McEwan 0419 049 922**

### Scorpions Netball Club

New players, coaches and umpires wanted. Training Wednesday evenings.

**Call Laura 0430 484 884 or email [scorpionsnetball@hotmail.com](mailto:scorpionsnetball@hotmail.com) or [www.facebook.com/ScorpionsNetballClub](http://www.facebook.com/ScorpionsNetballClub)**

### Voices of the Valley Choir

welcome new members to a friendly, no auditions choir, conducted by enthusiastic professional musician.

**Contact: Chris 9401 8725 or Val 9279 4177.**

### Bassendean Melody Club Inc.

**Invitation**

Join us to enjoy fellowship and singing along to the golden oldies. Venue: Bassendean Community Hall

Time: Fridays 10.00–11.45 am

(except Christmas break and Good Friday)

Cost: 50c or gold coin on 1st Friday of month.

**Contact Judy Bonny on 0438 080 144.**

### Rotary Club of Swan Valley

welcomes new members interested in community service.

**For information on Rotary or on our short-term Youth Exchange to New Zealand, contact Noel Allan on 9377 2277 or 0412 410 420.**

### Bassonovas Community Samba Drumming Group

**Learn Brazilian percussion in a fun easy way—no experience necessary!**

Call Bassendean Recreation & Cultural Services on 9377 8051 or check website: <http://sites.google.com/site/bassonovas/>

### The Railway Museum Bassendean Volunteers Wanted

It's fun! Could you help greet visitors to our museum? Sell tickets? Keep exhibits tidy?

Maintenance/handyman/gardening?

**136 Railway Parade Bassendean. Phone 9279 7189. [bookings@railheritagewa.org.au](mailto:bookings@railheritagewa.org.au)**

### Community Weight Loss Challenge

8 week course, fun and support,

**\$\$ for Biggest Loser!**

**Call Anne-Kit on 0412 711 775**

**For an opportunity to promote your organisation's activities.**

**Call us on 9377 8073 between 9.00 am–12.00 pm Monday to Thursday or leave a message with our Customer Service Centre on 9377 8000.**

The close-off date for the next issue is 27 March 2013. Space is limited, so please keep text to a minimum.

To the best of our knowledge, information provided here is correct at the time of printing. You are advised to contact the relevant organisation/club direct for confirmation.