

March 2022

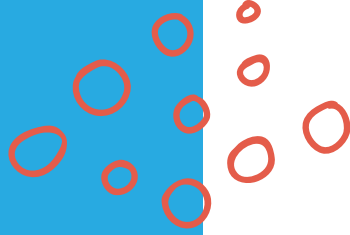


TOWN OF  
Bassendean

# thrive.







# Tell us what you want to read about!

THRIVE is a community publication, with information for you and about your community. Tell us what you think.

Is there something happening in the community that you think we should be talking about?  
Is a community member doing amazing things?

Let us know at [mail@bassendean.wa.gov.au](mailto:mail@bassendean.wa.gov.au)



## On the cover

Gya Ngoorp Dance Group,  
Celebrating Birak event, Mary  
Crescent Reserve, January 2022.

# Mayoral address

Hello and welcome to the first edition of Thrive for 2022.

**It's been a whirlwind start to the year, with the days flying by, as we move through the Noongar season of Bunuru, the Second Summer that is the hottest time of the year with little or no rain and warm easterly winds.**

We recently celebrated the previous season of Birak on the 26 January 2022 with a wonderful community gathering at Mary Crescent Reserve in Eden Hill. You can read more about on page 8.

A lot has happened in the last few months, with new COVID restrictions and WA borders opening, leading to our Council Meetings moving online as of March, in the interests of community and staff safety.

In a bid to stay connected during these unprecedented times, the Town is launching a digital version of Thrive, to be delivered straight to your inbox. You can find out more about this sustainable decision and how to “sign up” on the following page.

Thanks to the voting efforts of our residents and RAC members, the Town has secured a partnership with RAC Reconnect WA for a pilot project that will aim to revive the west end of Old Perth Road in collaboration with our community.

The activation to be held towards the end of 2022, compliments the 100 year anniversary of the naming of Bassendean. Residents may not know that there is a unique story behind the name, which you can read more about on page 6.

Don't forget, the Street Tree planting season will commence after the first rains in May. If you would like to request a tree to be planted on your verge, please head to page 5 for more information.

**Kath Hamilton**  
Mayor



# Thrive mailing list promotion

Thrive is going digital!

Stay connected with current news, events and community highlights straight to your inbox, by signing up to our mailing list.

We've decided to produce a regular e-news so we can connect with more of you, more often.

Don't worry, we'll still be producing the printed edition of Thrive a few times a year to keep everyone in the loop (including those who may not have the internet!). Going digital also aligns with the Town's sustainability aims as it will save on paper and help reduce our carbon emissions.

So, keep up to date and join our mailing list today at [bassendean.wa.gov.au/signup](https://bassendean.wa.gov.au/signup)



# Waste & Sustainability



## Plants to residents program is going live this May!

**The Town's Plants to Residents program will continue in 2022, with residents being able to purchase native, water wise plants at a subsidised rate of \$1 each through EnviroHouse. Plant vouchers for 10 or 20 plants go on sale Tuesday, 3 May, and can be purchased online, over the phone or in person (you can find the details below).**

Plant collection will be from the Town of Bassendean Depot.

Where: 69 Scaddan Street, Bassendean

When: Saturday, 18 June & Sunday, 19 June, 9am and 3pm\*

Please remember to bring your proof of residence and vouchers when collecting plants.

### EnviroHouse Contact Details

Online orders: [www.trybooking.com/867576](http://www.trybooking.com/867576)

Website: [www.envirohouse.org.au](http://www.envirohouse.org.au)

Address: 125 King Williams Street, Bayswater

Phone: (08) 9271 4488

### Opening hours:

Tuesday to Friday: 9am to 1pm

Saturday: 10am to 4pm

Closed on Sundays, Mondays and Public Holidays

This initiative is proudly co-funded by Water Corporation's Waterwise Greening Scheme and forms part of our commitment to continue being a leading waterwise local government.

### Is your waste bin going to waste?

Did you increase the size of your red-lidded general waste bin when FOGO was rolled out and no longer need the extra capacity?

A year and a half on, you may have found that sorting your waste and using your FOGO bin to its full potential is quick, easy and working for you, and you may no longer need the larger red bin.

The red-lidded general waste bin is for things that can't be composted or recycled, such as:

- Hygiene products
- Nappies
- Plastic bags
- Polystyrene and soft plastics
- Damaged clothing, crockery, general items

Preferably take all your soft plastics such as bread bags, chip packets and plastic bags to REDcycle bins at major supermarkets.

For more information on REDcycle, see [www.redcycle.net.au](http://www.redcycle.net.au)

If you would like to downgrade your 240L Red bin to the 140L bin – and save yourself \$125 per annum – please phone SUEZ on 9350 7195.

\*This will be the only weekend for plant collection. Any plants not collected on the day will be forfeited. Whilst the Town and EnviroHouse hopes to allow residents to select their own plants, COVID-19 restrictions may require the plants to be supplied in pre-arranged packs and via contactless collection.

# Street trees

Our community has told us repeatedly, trees are one of the main reasons they love living here. With the Town planting more than 2,000 trees over the past two years, it has positively contributed towards creating a more sustainable environment and green, shaded town. The planting of trees provides significant benefits for our community, both now and into the future. These can be summarised as:



**This year, the Town will be planting 1000 more trees as part of the winter planting program.**

**This will include:**

- Areas in Eden Hill with new underground power installed
- Residents who have requested a street tree
- The industrial area

The planting season occurs during the cooler months when young trees are more likely

to establish well in their new environment, typically from May until September.

To maximise the survival rate, each tree will be staked and planted in a basin with a layer of mulch. We will water the trees during the first two summers and residents are encouraged to water them too.

Residents can also request a tree online at [bassendean.wa.gov.au](http://bassendean.wa.gov.au)



# Celebrating 100 years of Bassendean

2022 marks the 100 year anniversary of when West Guildford officially changed its name to Bassendean.

The below excerpt from 'Bassendean: A Brief History' tells the story well:

Twenty one years after its founding as a local authority, the West Guildford Road Board resolved to change the name of the suburb to distinguish it from what was believed to be the 'smaller', 'less progressive', and 'has-been', township across the river. The assertion that the district needed its own identity was unanimously supported by the Board, but had a mixed reception from residents. The Board's suggestion of 'Stirling' was not popular, nor was 'Florida', or 'Mandoon', the Noongar name for a greater part of the district, so it was resolved that a competition open to primary school children would be run and F Taylor (a local business man) offered a one guinea (£1.1s) prize for the winner.

Clare Drysdale and Sylvia Sharman shared the money for their suggestion of 'Bassendean', which was chosen by the Board at their meeting on 9 May 1922 for its association with the Broun family farm, and in the hope that the new name would satisfy the traditionalists among the ratepayers.

On the anniversary of the founding of the road board, in July 1922, 'Bassendean' was gazetted as the new name for the district.

## The meaning behind the name: Bassendean Homestead

The Bassendean Homestead [which sat on one of the largest parcels of land in (what was) West Guildford] was the home of Peter Broun, first Colonial Secretary, and his family. He named the place after his ancestral home in the United Kingdom and, in 1922, the suburb of West Guildford was renamed Bassendean for the local landmark. The property had various owners and tenants including the Clunes, Malachi Reidy Meagher and the Hams. Bassendean Homestead was demolished c1940.

## More stories to share

Over the coming months, to continue the celebration and reflection of the last hundred years of Bassendean, we will be sharing stories about people, places and facts that might help paint a fuller picture of our rich history – so keep your eyes peeled on our website and social media!!



ONLY 4 1/2 MILES FROM PERTH & Connected with same by Splendid Road, Good River & Railway

# BASSENDEAN

Residential Sites — Poultry Farm Sites — Business Sites —  
Market Garden Areas —

(See Market Gardens  
Already Established  
on the Estate.)

River Frontages  
Commanding  
Magnificent Views

Note!!!  
We are prepared to sell any of  
the unsubdivided land between  
Road & River in any sized area  
to suit requirements

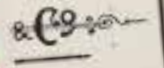


Shaded Lots  
have been Sold

**TERMS**  
to Suit all Classes  
of Buyers

**FOR PRICES & TERMS**

Apply  
**919 HAY ST. PERTH**  
Or Authorized Agents.



Nelson St  
Bassendean  
11 May 1922

Miss Sylvia Sherman  
Nelson St

Dear Miss Sherman,

Herewith please  
find cheque for 10% being your share of  
the proceeds to be paid the collector  
the amount which would be adopted for  
West Leedford. As there were two of you each  
in "Bassendean" if you decide to divide the proceeds  
the committee hope that you will be able to  
later years to look back and remember with  
pride the part you played in assisting  
to make "Bassendean" famous.

Yours truly,  
The "Bassendean" Committee  
Alfred Barclay



# Special feature: Barak Festival

## Celebrating Birak at Mary Crescent

Over one hundred residents, new and old, gathered at Mary Crescent Reserve on 26 January to Celebrate Birak, the Noongar season that loosely corresponds to the calendar months of December and January. Traditional custodians of the land identify six different seasons through various changes in the environment.

The event provided a warm welcome to 29 adults and 2 children who joined our community in celebrating the culture of the traditional custodians of the land on which they were pledging loyalty to Australia.

The morning kicked off with a breakfast provided by the Bassendean SES volunteers, followed by a Welcome to Country by Trevor Stack, a Noongar man with connections to

Whadjuk, Ballardong, Tued and Wardandi clans of Western Australia.

This was followed by a moving musical performance by Gina Williams and Guy Ghouse, a marvellous Karaak and Marri showcase presented by Bassendean Primary School students and a traditional performance from the Gya Ngoorp dance group.

Mayor Kath Hamilton was honoured to be part of the day, “It was such a special experience to be involved in a strong community display of unity, culture and connection, especially given it was my first citizenship ceremony as Mayor. I warmly welcome all of those who became new Australians that day and thank everyone for their contributions and participation.”









# Anoop and Rakhi's story



Anoop, Rakhi and their child, Ananth, became Australians on 26 January 2022 and agreed to answer a few questions so that we could better understand their journey that led them to settle in Bassendean, Western Australia.

## Can you share a bit about your life in your home country?

India is a country of diverse culture, traditions, and religions. It's a bit complex and can be chaotic sometimes. Our families are from a state down South called Kerala which is also known as "God's own country". Its scenic beauty and landscape is worth a visit for any traveller. We settled in a city called Bangalore, in the neighbouring state of Karnataka which is also known as "The Silicon Valley of India". It's very different and the city never sleeps with people and taxis plying throughout the night. It's huge and spread across 8000+ sq kms. Protests, clashes and the related chaos were not unusual either.

Our life back then was a mix of everything; rich in day-to-day traditions and rituals; festivals every other day, and with a community inclusive of so many religions, we got to enjoy every bit of it. Being religious also meant, we got to visit the temples every now and then, which gave us a peace of mind from day to day stress. [We had] many friends... meaning we got to attend many engagements, marriage, birthdays, house warmings... you name it!

## Why did you choose Australia?

I had a few colleagues who migrated to Australia and had good feedback about Australia. We just decided to go with the flow. Oh, and we wanted to see the Kangaroos one day!

## What you are looking forward to now that you are Australian Citizens?

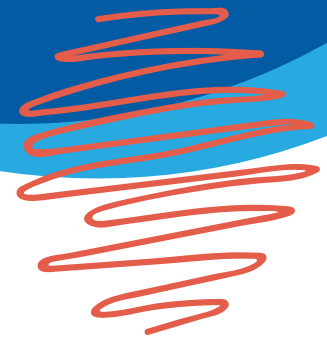
From what we have experienced so far, it has been a pleasant one. The beautiful beaches around are a beauty in themselves. Most of the people whom we have come across have been so helpful and down to earth. The community in general are so helpful with most of them willing to help each other. The very idea of wishing a total stranger "good day" when you head down for a walk is so enriching in itself. That definitely puts a smile on each other's face, something that is probably missing in many parts of the world.

The concept of mateship can be seen many times in practice, which speaks of being a true "Australian". Though we have felt lonely due to lack of physical/mental family support due to being so far away, we have also felt relatively safer here so far.

In short, we are glad that we made that decision to move to Australia then and we are here in this beautiful country today. We look forward to helping the wider community in every possible way and must say we have already started. This Citizenship helps us cement it together even better. Bring it ON!







# Your Councillors



**Cr Kath Hamilton**  
**Mayor**  
0408 725 555  
crhamilton@bassendean.wa.gov.au



**Cr Renée McLennan**  
**Deputy Mayor**  
0411 091 667  
crmclennan@bassendean.wa.gov.au



**Cr Hilary MacWilliam**  
9379 8382  
crmacwilliam@bassendean.wa.gov.au



**Cr Emily Wilding**  
0415 395 301  
crwilding@bassendean.wa.gov.au



**Cr Jennie Carter**  
crcarter@bassendean.wa.gov.au



**Cr Paul Poliwka**  
crpoliwka@bassendean.wa.gov.au



**Cr Tallan Ames**  
crames@bassendean.wa.gov.au

## Role of Council

The Council governs our Town's affairs and is responsible for the performance of the local government's functions. Council also oversees the allocation of our Town's finances and resources; and determines our Town's policies.

## Role of Mayor

The Mayor presides at meetings, provides leadership and guidance to the community in the district, carries out civic and ceremonial duties on behalf of our Town; speaks on behalf of our Town, and liaises with the CEO on our Town's affairs and the performance of its functions.

## Role of Councillors

Councillors represent the interests of the electors, ratepayers and residents of our Town. They provide leadership and guidance to the community and facilitate communication between the community and the council.

HOME BY THE SWAN



## Contact the Town of Bassendean

35 Old Perth Road Bassendean, WA 6054  
PO Box 87, Bassendean WA 6934  
(08) 9377 8000  
[mail@bassendean.wa.gov.au](mailto:mail@bassendean.wa.gov.au)  
[www.facebook.com/bassendeancouncil](https://www.facebook.com/bassendeancouncil)  
[www.bassendean.wa.gov.au](http://www.bassendean.wa.gov.au)

